

# KODAK INDUSTREX B 2000 Processor



HEALTH SCIENCES



**PLEASE NOTE**

The information contained herein is based on the experience and knowledge relating to the subject matter gained by Eastman Kodak Company prior to publication.

No patent license is granted by this information.

Eastman Kodak Company reserves the right to change this information without notice, and makes no warranty, express or implied, with respect to this information. Kodak shall not be liable for any loss or damage, including consequential or special damages, resulting from the use of this information, even if loss or damage is caused by Kodak's negligence or other fault.

**CAUTION**



This equipment includes parts and assemblies sensitive to damage from electrostatic discharge. Use caution to prevent damage during all service procedures.

## Table of Contents

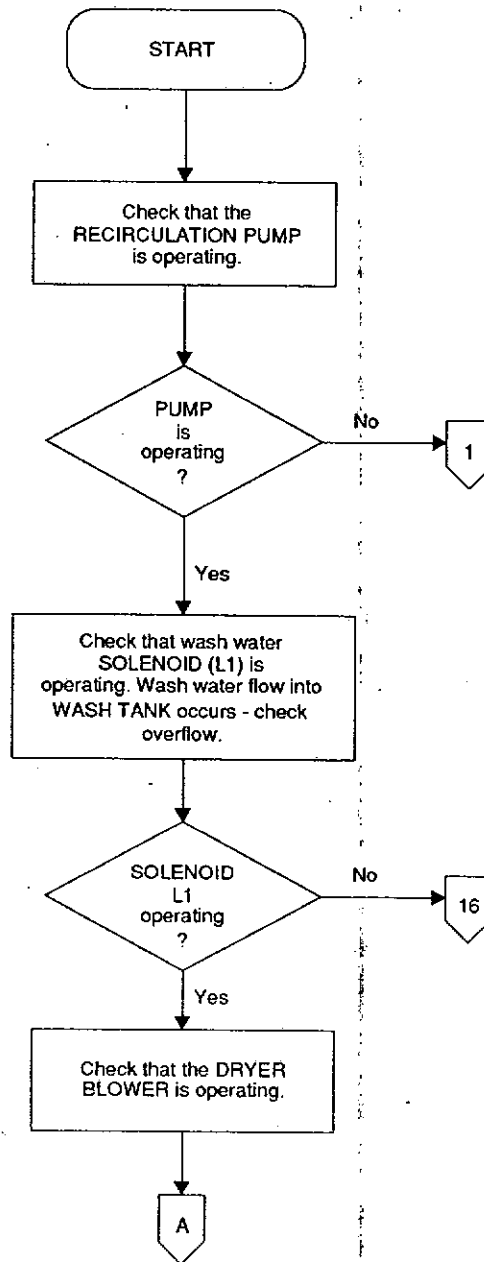
Description	Page
<b>Cycle of Operation</b> .....	3
Overview .....	3
No. 1 No Recirculation - Recirculation Pump B3 is not operating. ....	8
No. 2 Developer Cooling Solenoid L2 is not Operating .....	13
No. 3 Dryer Blower B1 is not Operating .....	14
No. 4 Safelight is not Energized .....	15
No. 5 Main Drive Motor B2 is not Operating .....	18
No. 6 Developer LEDs DS5 (300 Bd) or DS6 (400 Bd) are Deenergized.....	22
No. 7 Dryer Lamp DS5 is Deenergized .....	27
No. 8 Developer Meter is not Energized.....	31
No. 9 Developer Temperature is not Increasing.....	34
No. 10 Dryer is not Heating .....	35
No. 11 Processor Will Not Go into the Standby Mode .....	38
No. 12 Processor Will Not Come Out of "Standby" .....	39
No. 13 Replenishment is not Occurring.....	40
No. 14 Film Feed Audio Indicator DS7 is not Operating.....	42
No. 15 Counter M1 is not Operating.....	43
<b>Standby Mode</b> .....	44
Overview .....	44
No. 16 Wash Water not Flowing - Mode 1, Out of Standby .....	45
No. 17 Wash Water Flowing - Mode 2, Out of Standby.....	48
No. 18 AC Power Diagnostics 120 V ac.....	50
No. 19 Developer is Overheating.....	54
<b>100 Circuit Board - Functions of the LEDs</b> .....	57

# Cycle of Operation

## Overview

### Conditions:

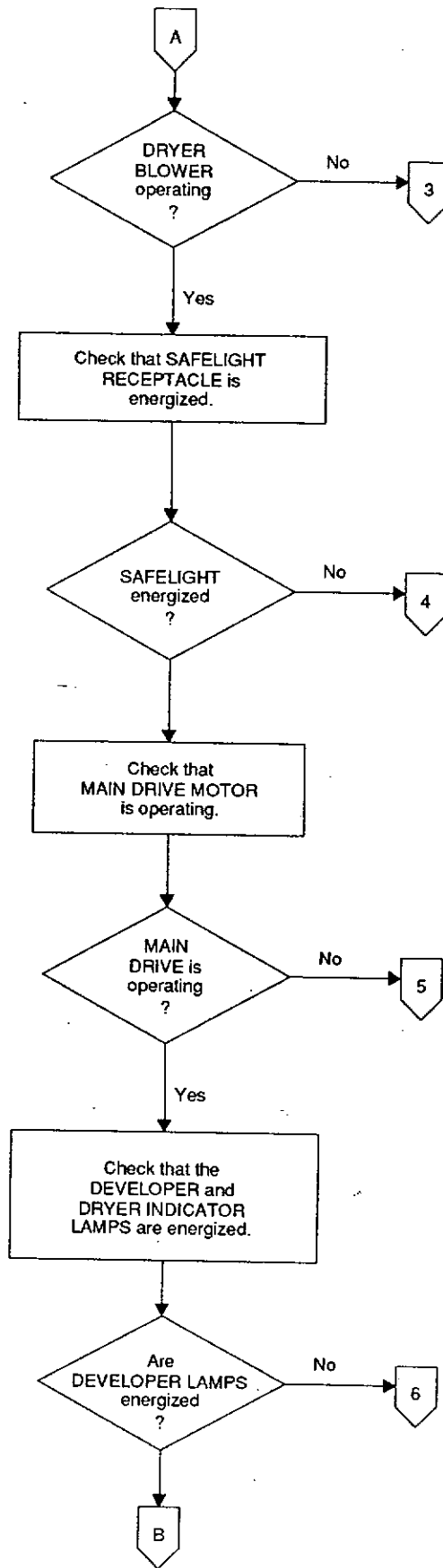
- The processor is energized.
- The Flooded Replenishment Mode is set to "OFF".
- The Dryer is at the correct operating temperature.
- Water flow into the processor is occurring.



Cycle of Operation

H136\_9005DC

NOTE:  
After approximately 6 seconds  
check that the following are  
operating:



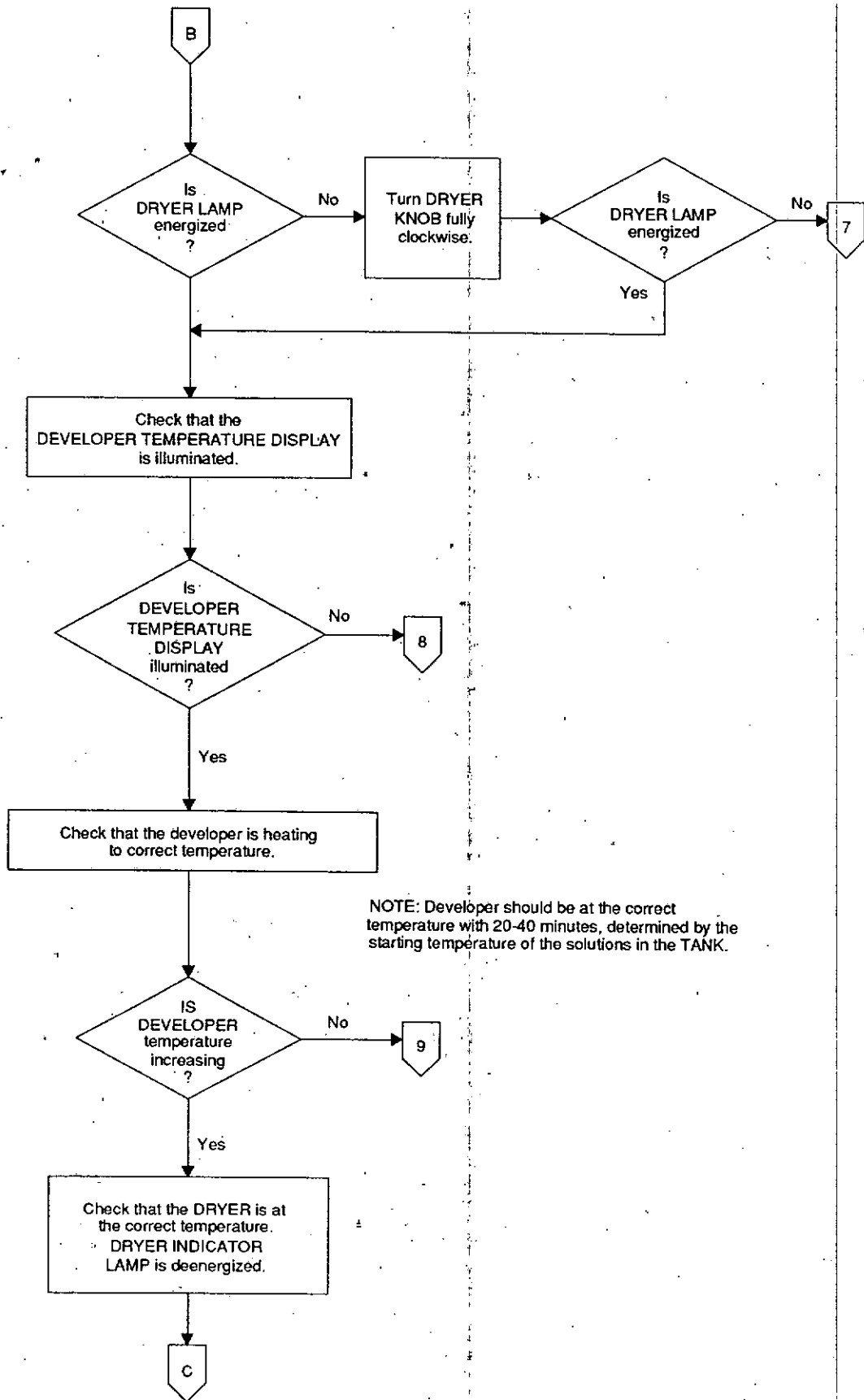
**WARNING**

Dangerous Voltage

NOTE:  
Remove drive-side ACCESS PANEL  
to check for movement of CHAIN  
on DRIVE MOTOR.

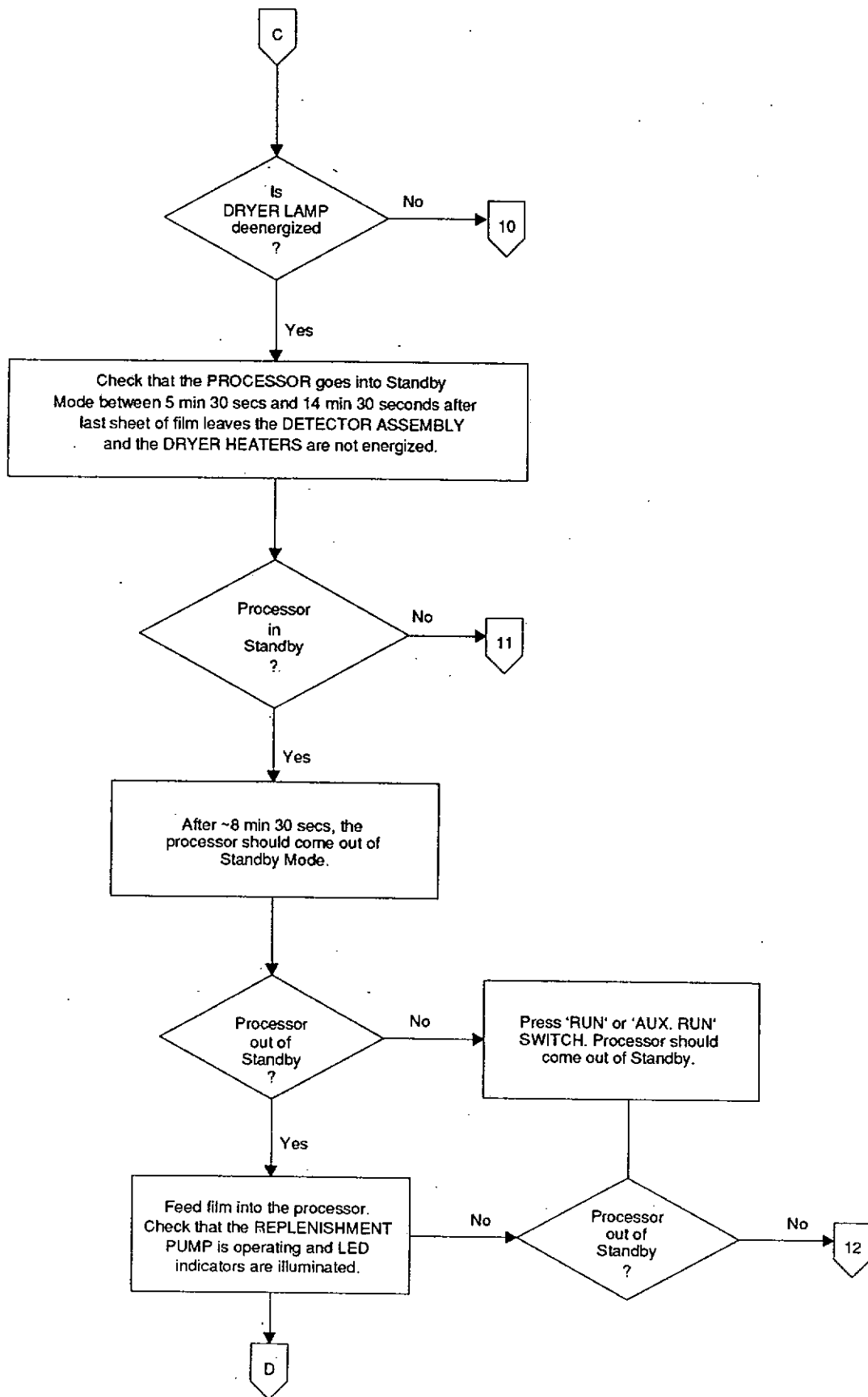
Cycle of Operation

H136\_9006EC



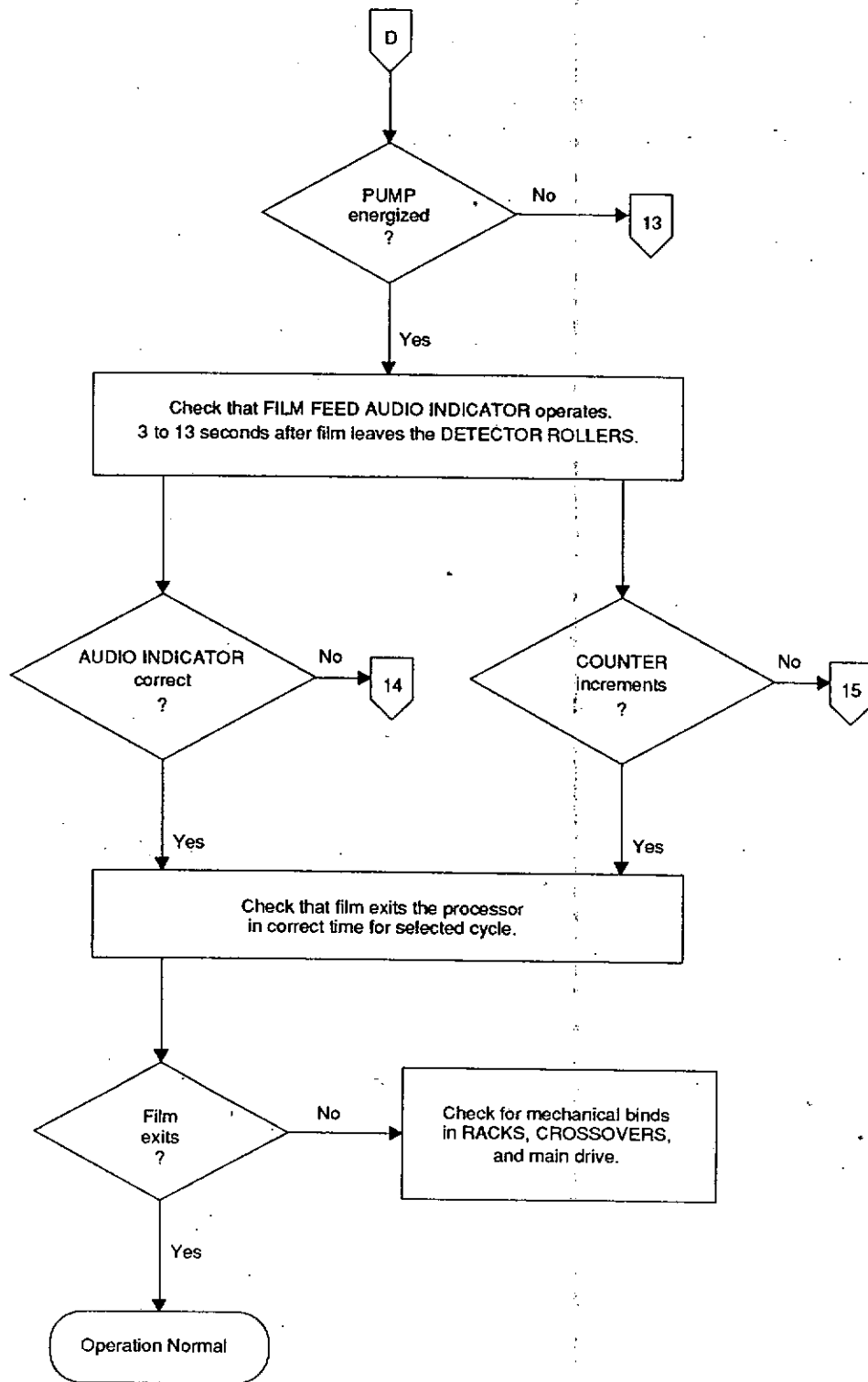
Cycle of Operation

H136\_9007EC



Cycle of Operation

H136\_9008EC



# No. 1 No Recirculation - Recirculation Pump B3 is not operating.

Condition:

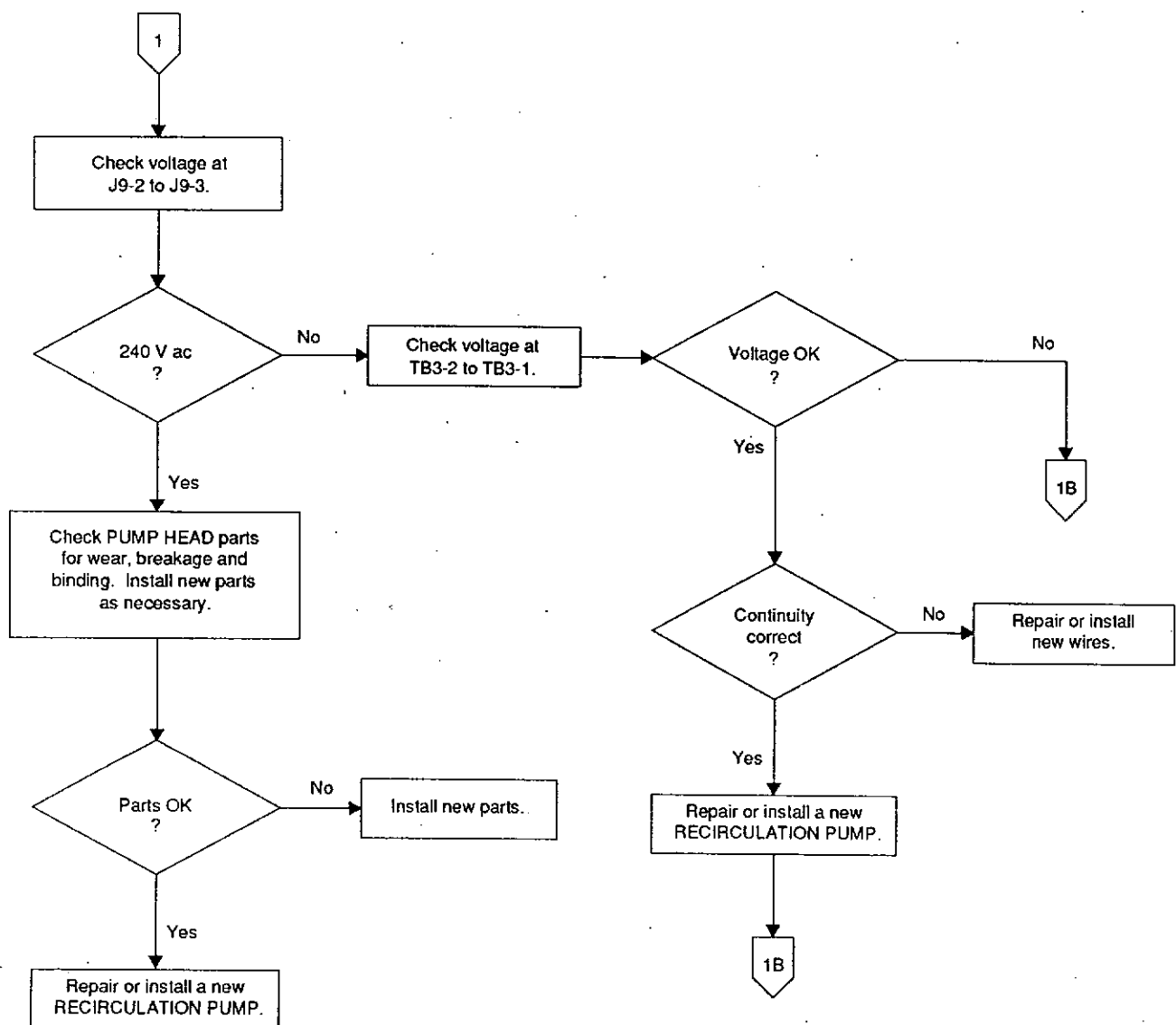
- All components are operating correctly except the Recirculation Pump B3.
- The Connector P/J9 is connected correctly.

**WARNING**

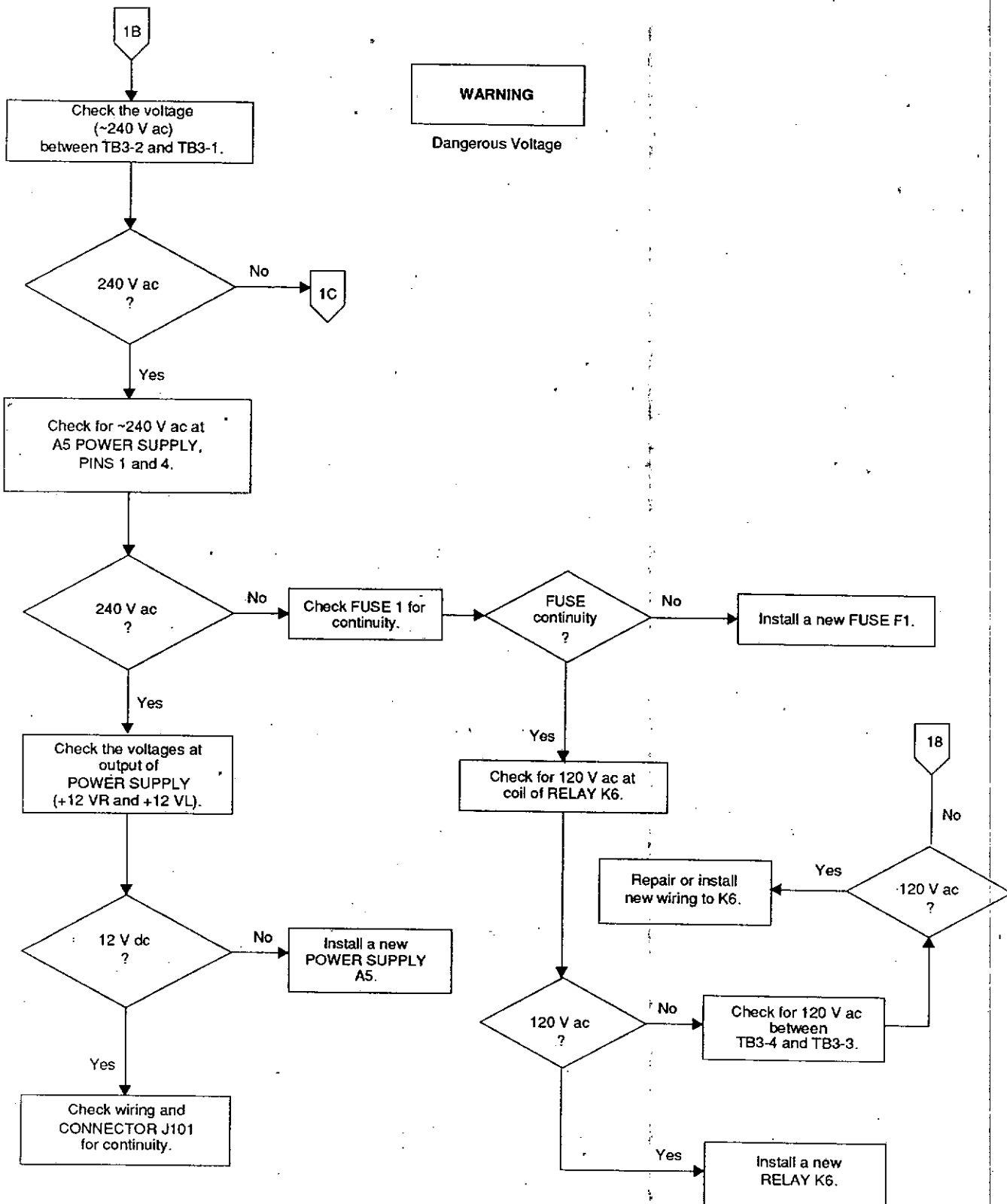
Dangerous Voltage

**CAUTION**

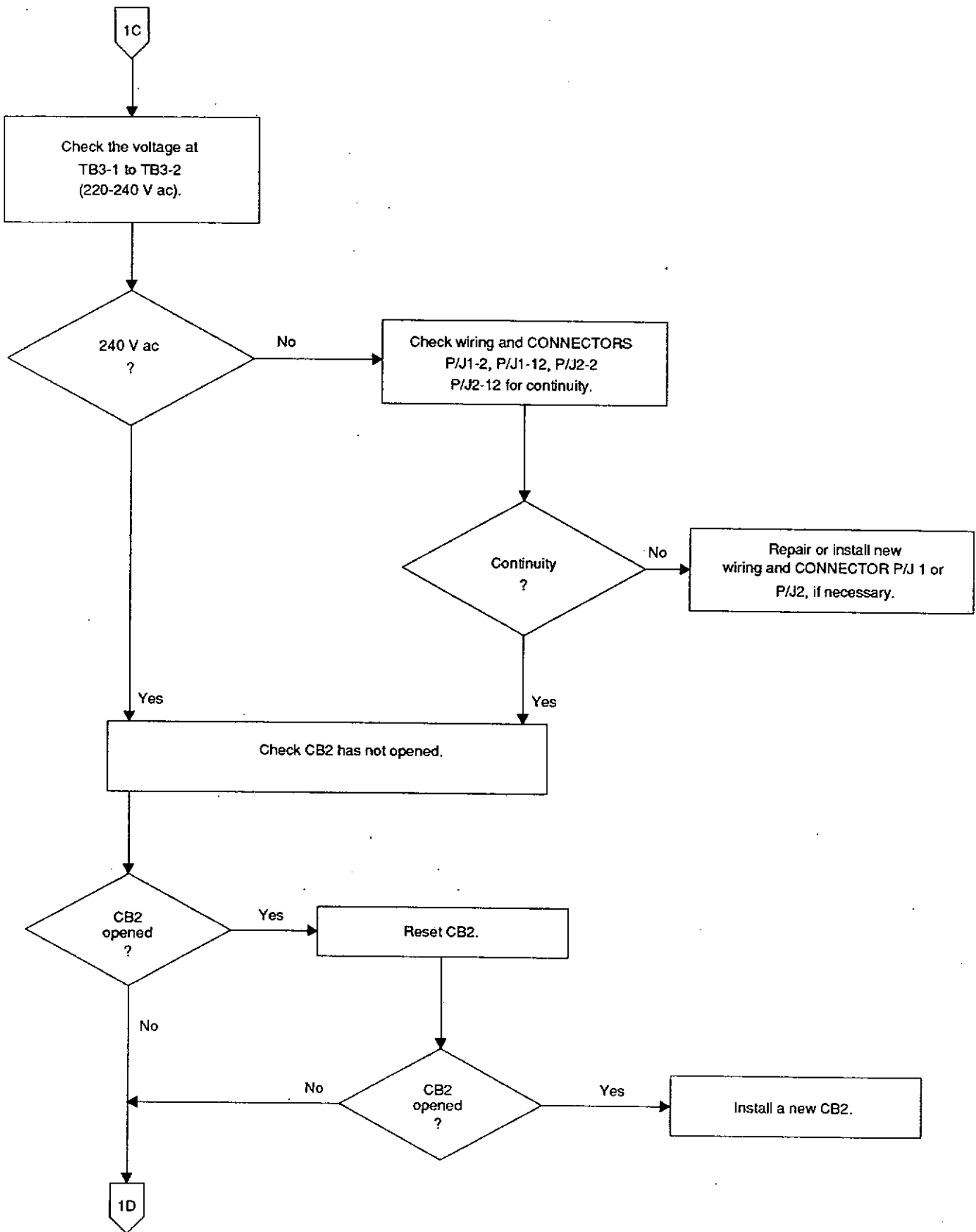
Possible damage from electrostatic discharge.







**WARNING**  
Dangerous Voltage

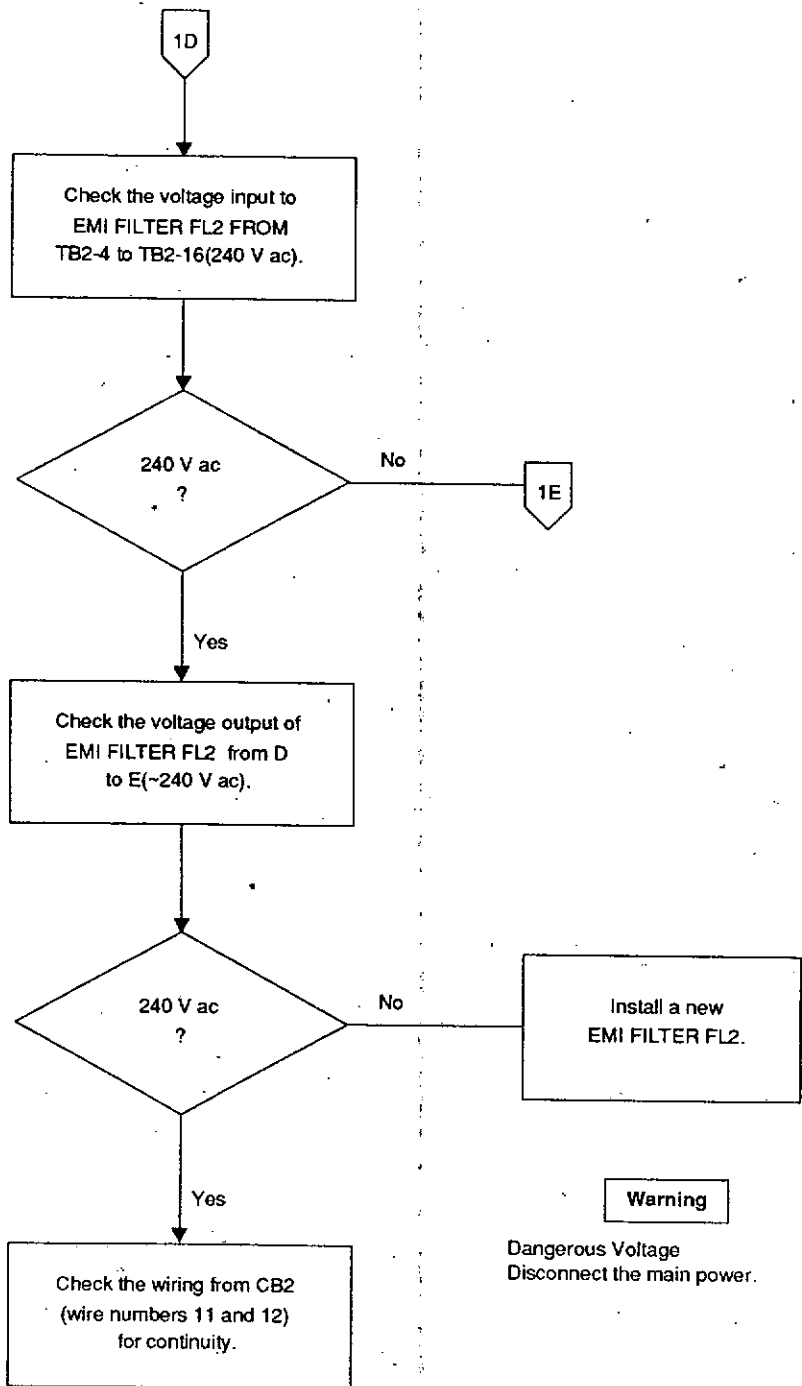


AC Power Distribution - 240 V ac

H136\_9013EC

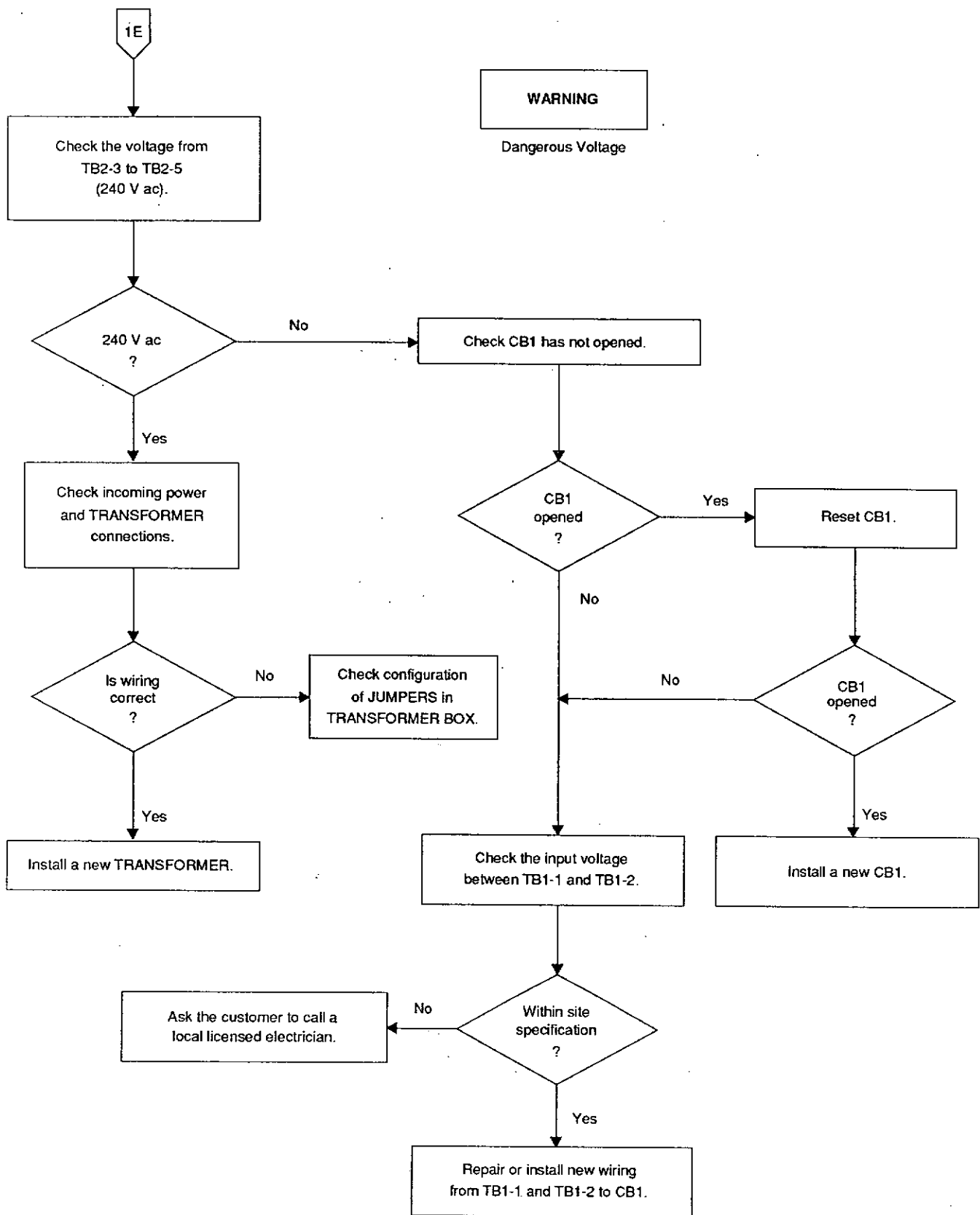
**WARNING**

Dangerous Voltage



**Warning**

Dangerous Voltage  
Disconnect the main power.



**WARNING**  
Dangerous Voltage

## No. 2 Developer Cooling Solenoid L2 is not Operating

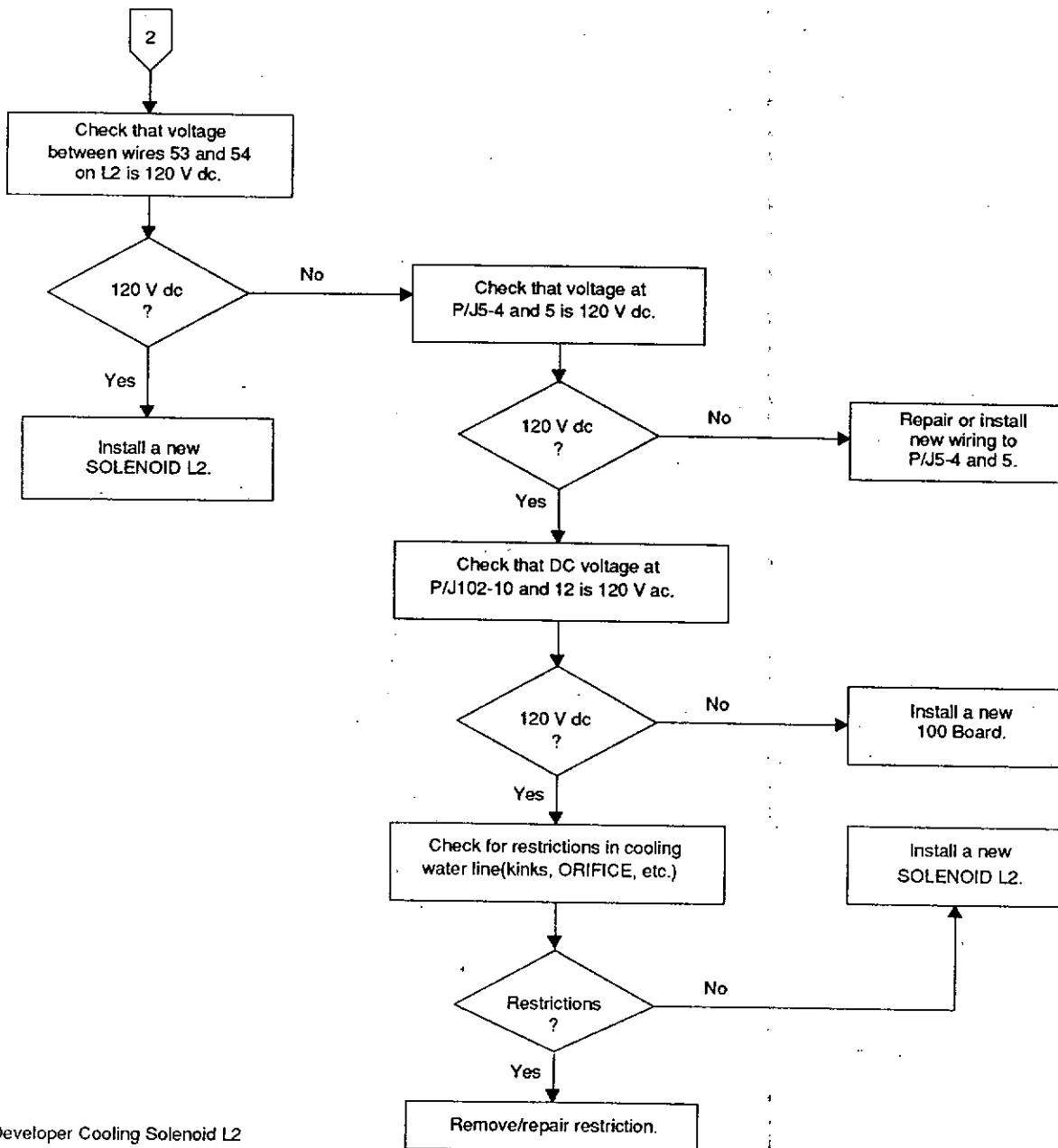
Condition: The water supply is turned on and the Wash Tank is full of water.

**WARNING**

Dangerous Voltage

**CAUTION**

Possible damage from electrostatic discharge.



Developer Cooling Solenoid L2

H136\_9016DC

### No. 3 Dryer Blower B1 is not Operating

**Condition:**

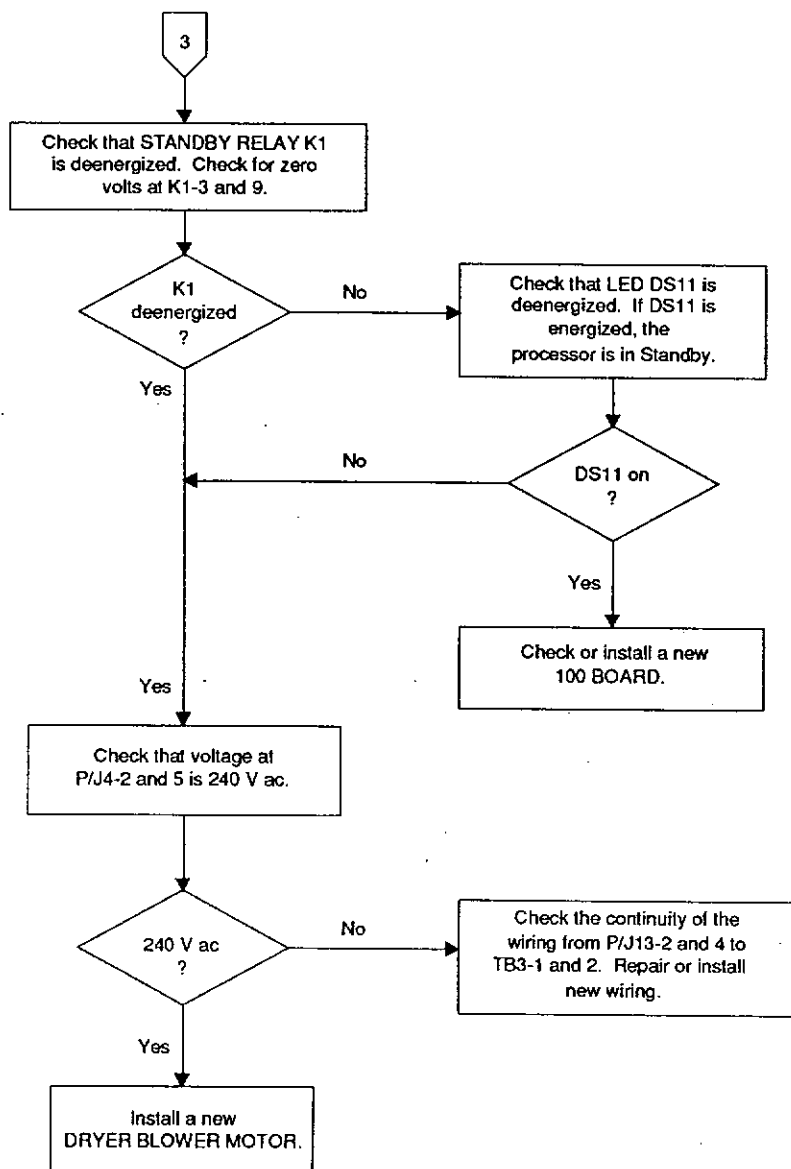
- The processor is not in "Standby" Mode.
- The Connector P/J13 is connected correctly.

**WARNING**

Dangerous Voltage

**CAUTION**

Possible damage from electrostatic discharge.



# No. 4 Safelight is not Energized

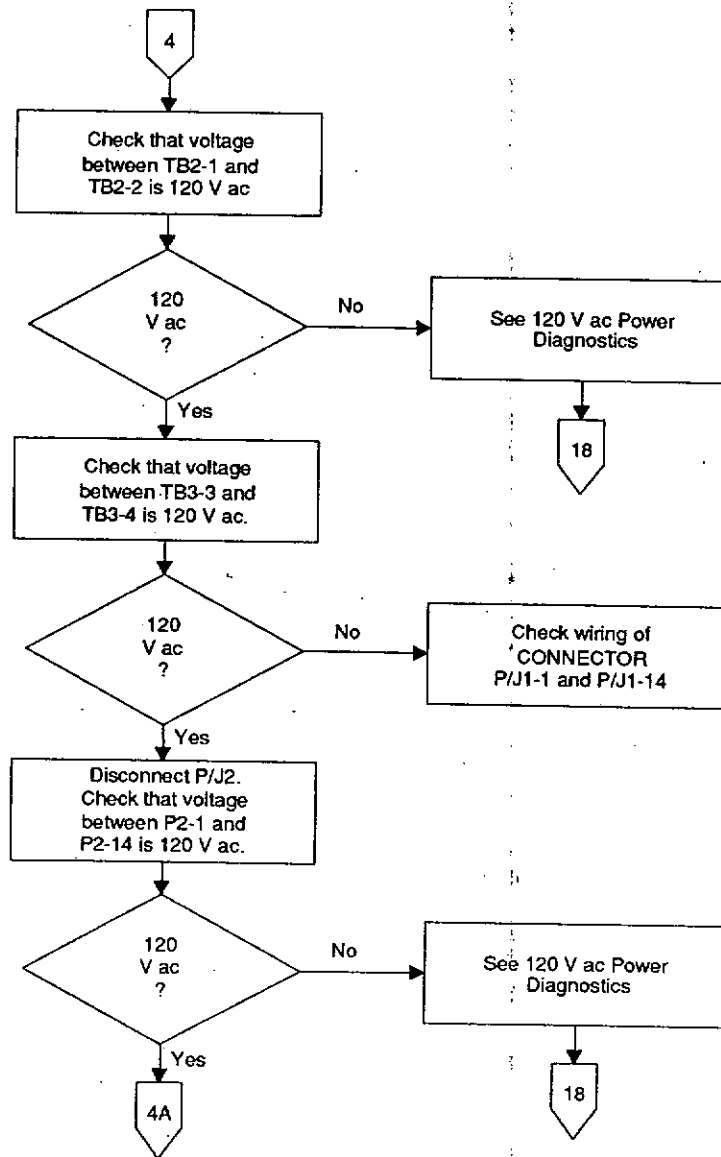
Condition: The Detector Switches are adjusted correctly and film is not feeding.

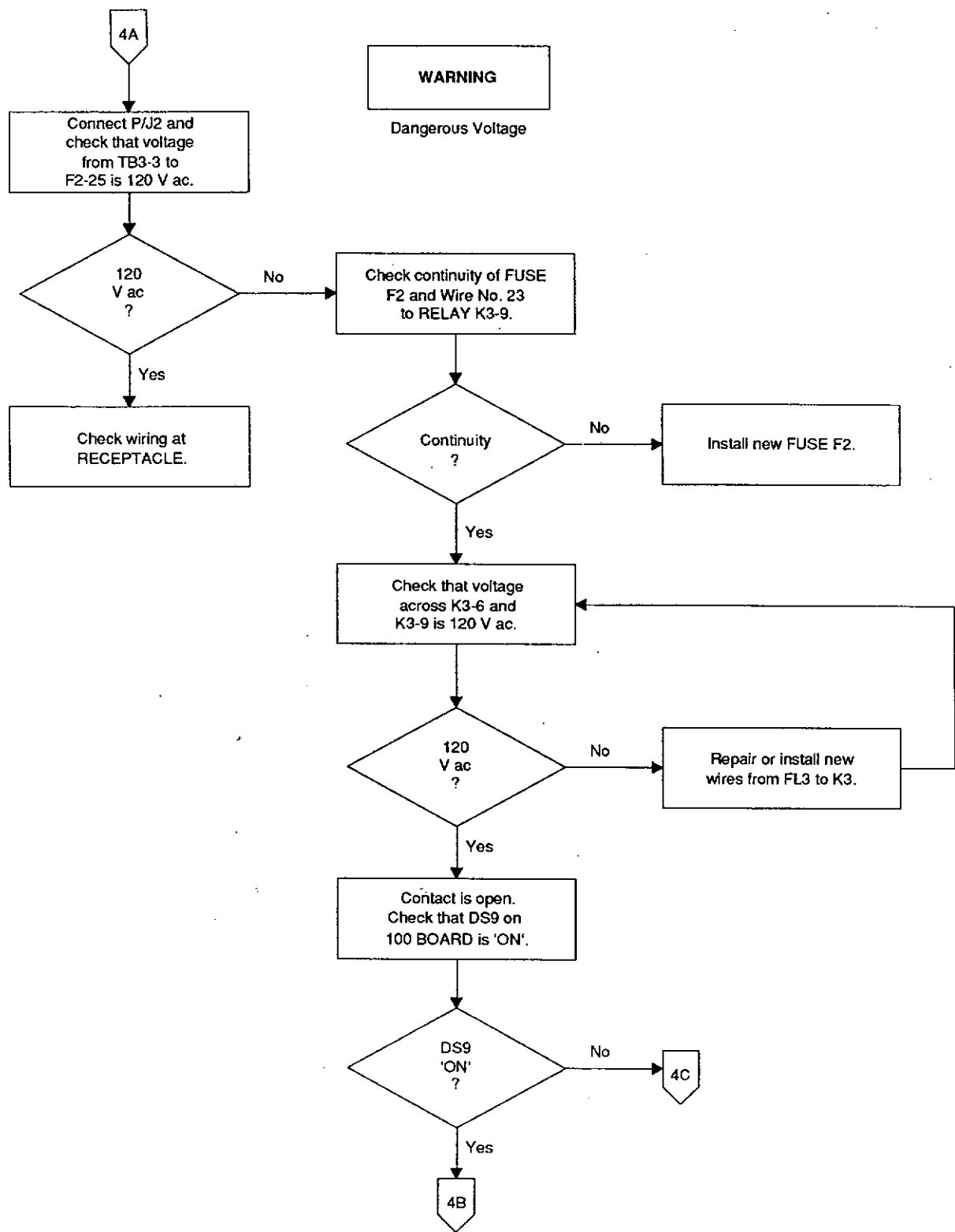
**WARNING**

Dangerous Voltage

**CAUTION**

Possible damage from electrostatic discharge.

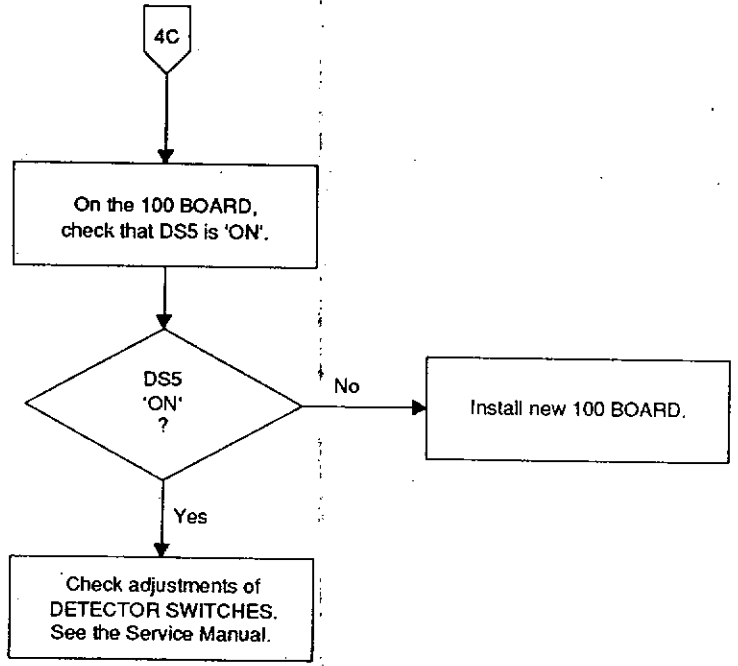
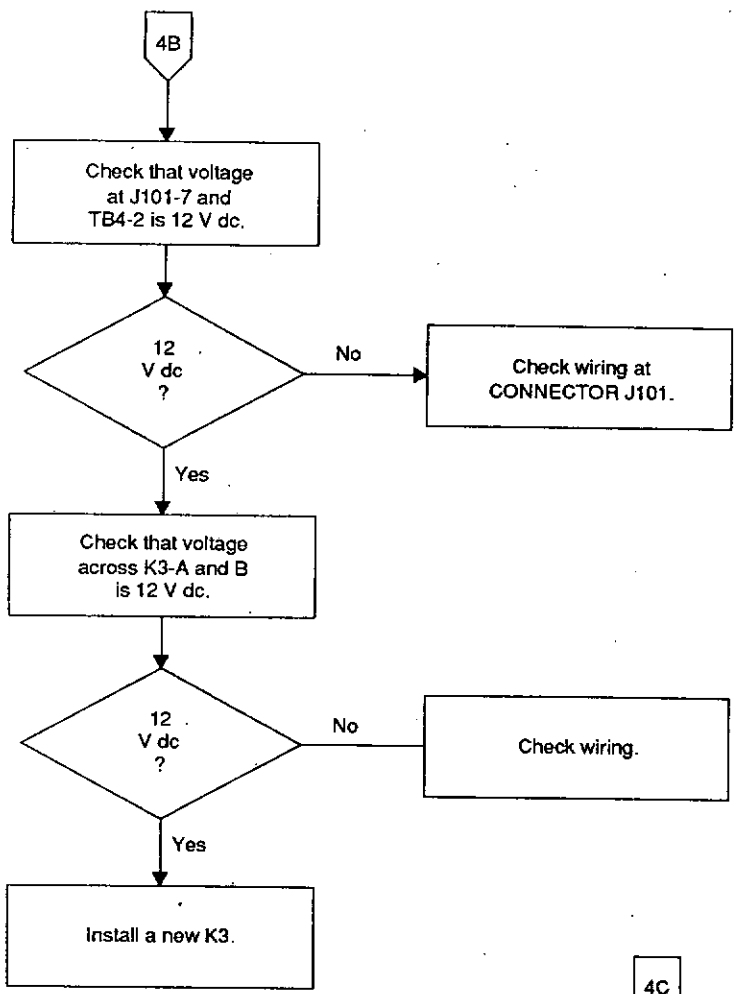




**WARNING**

Dangerous Voltage



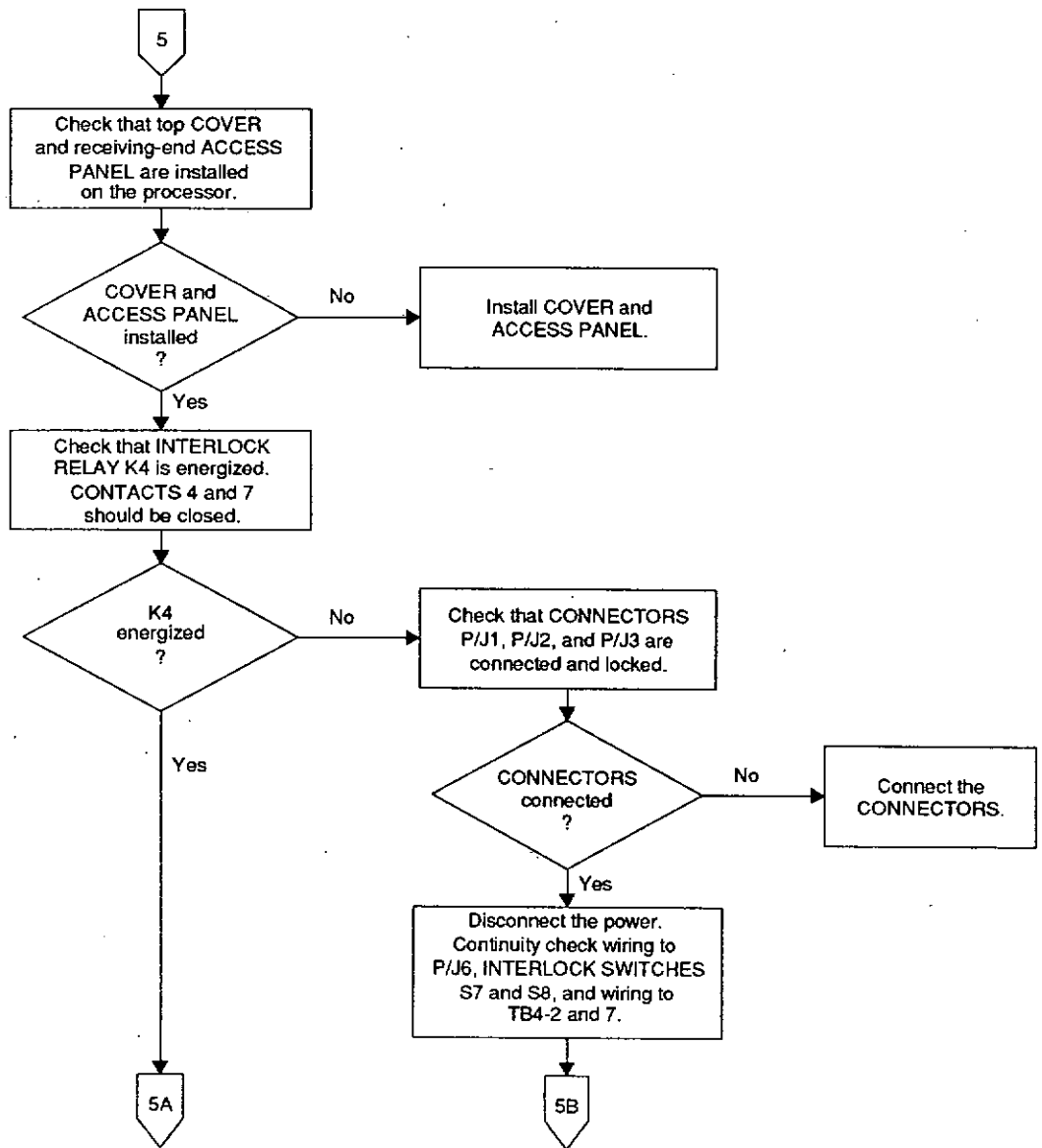


# No. 5 Main Drive Motor B2 is not Operating

Condition: The processor is in "Bypassed" mode.

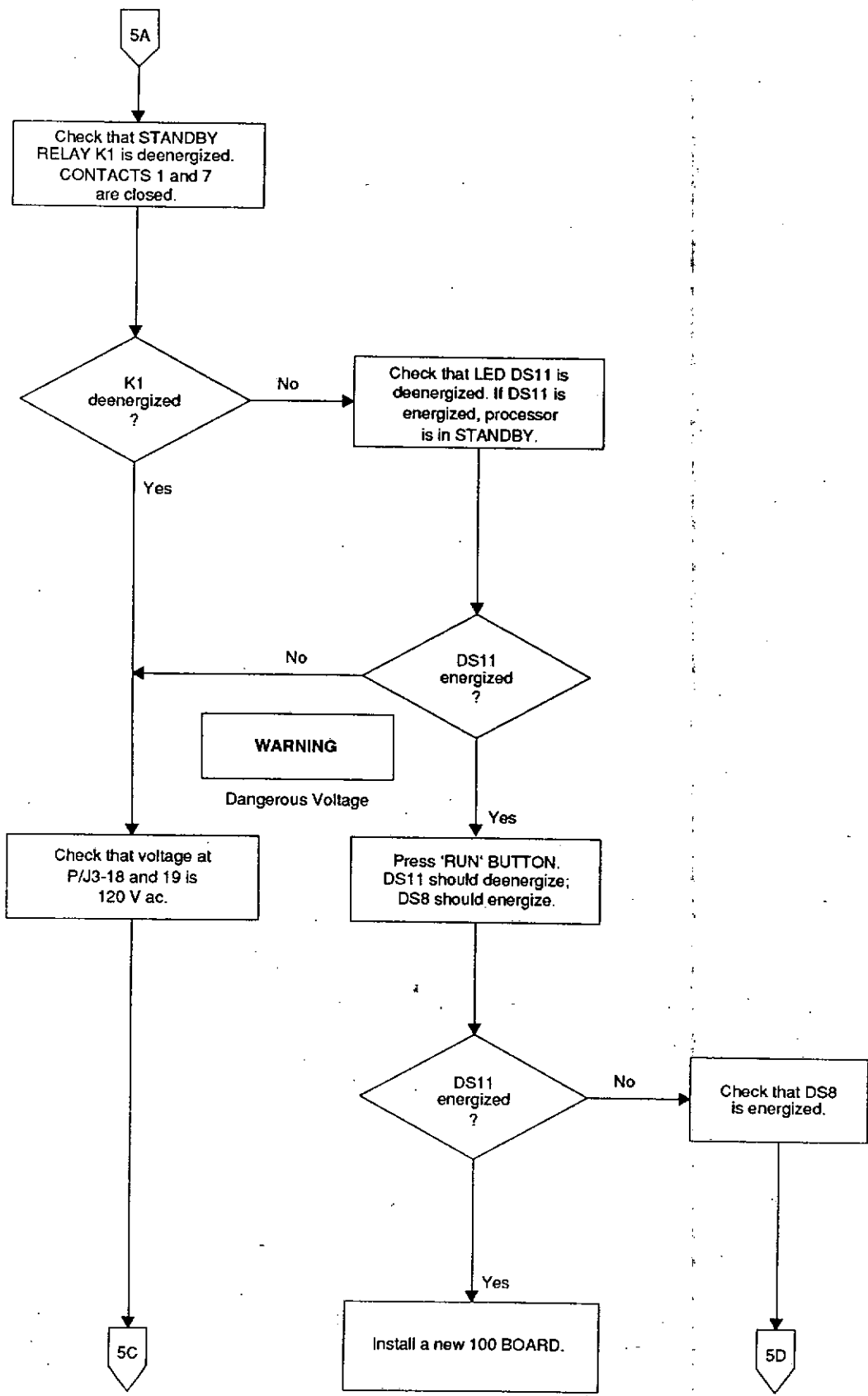


Possible damage from electrostatic discharge.



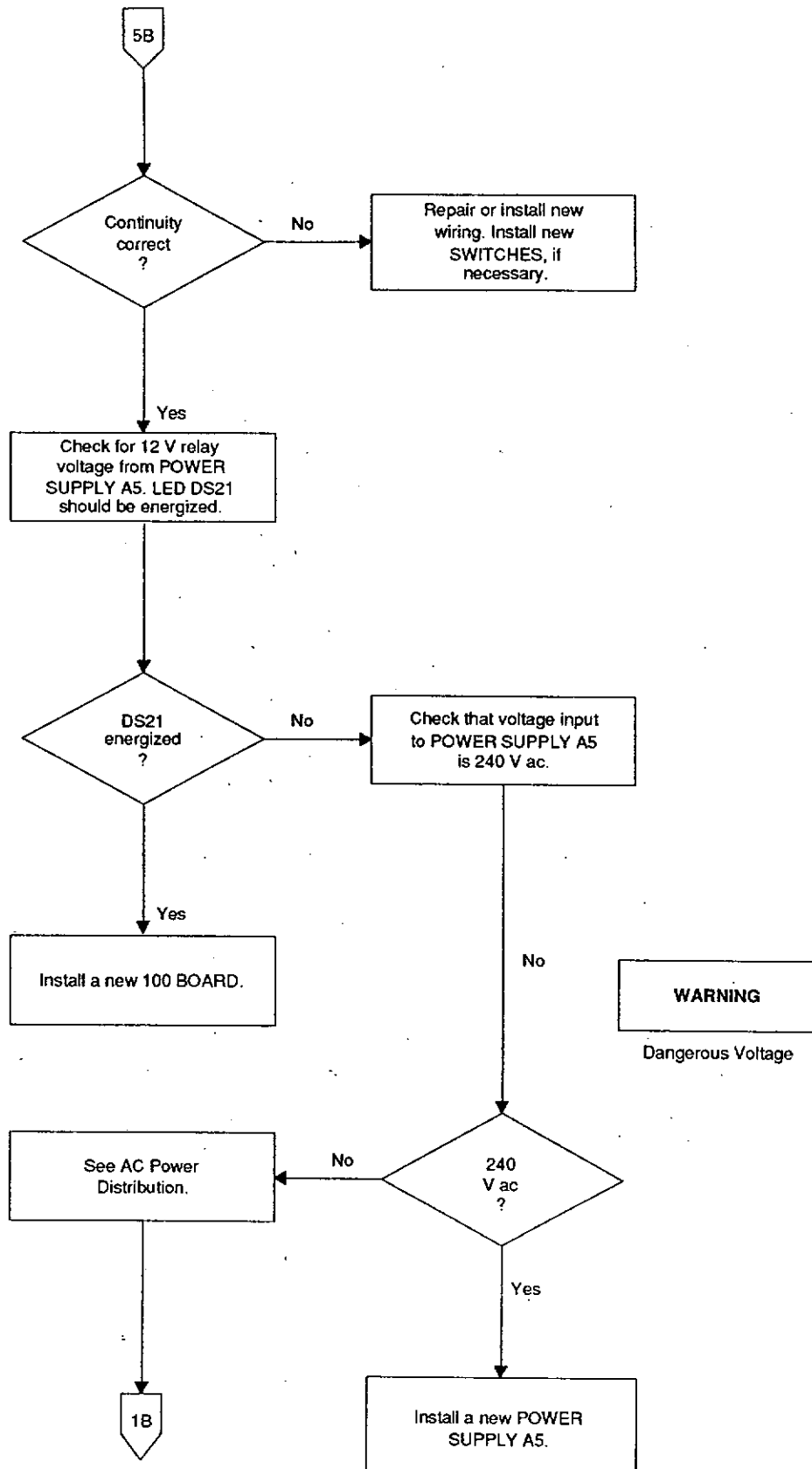
Main Drive Motor B2

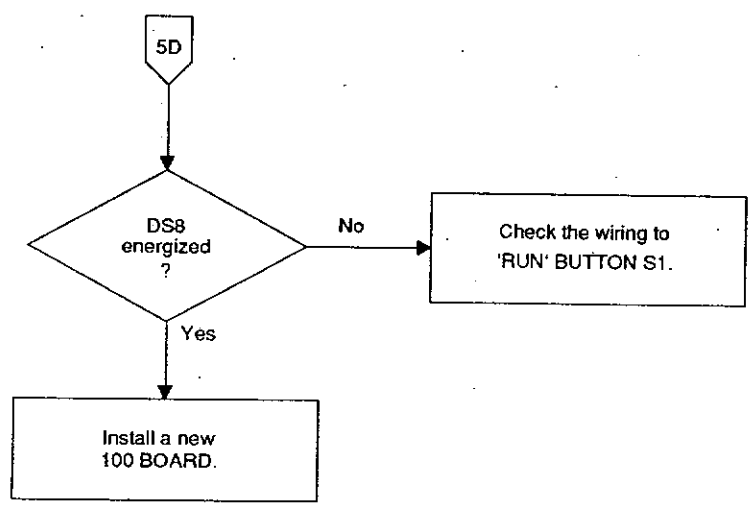
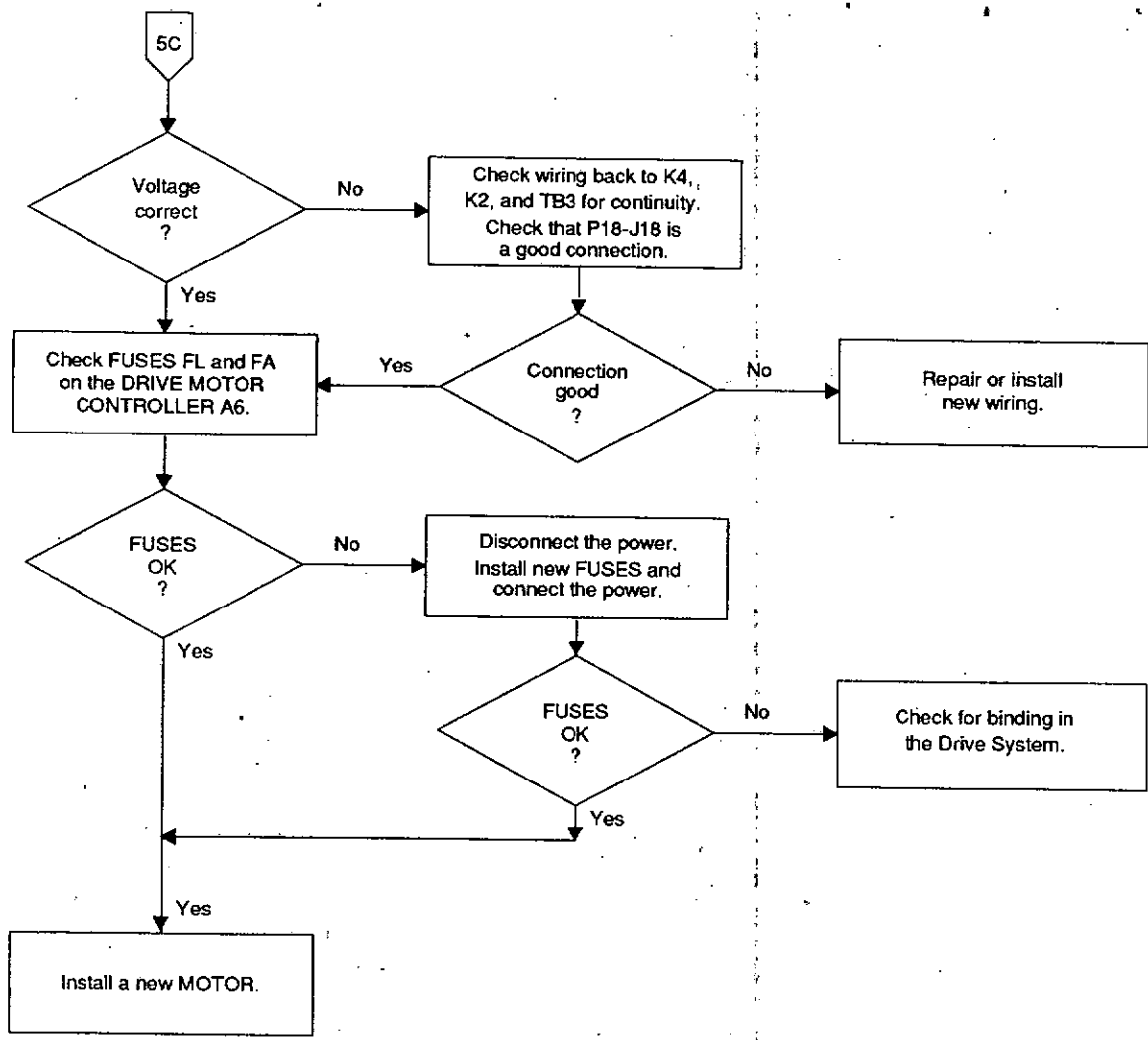
H136\_9055DC



Main Drive Motor B2

H136\_9056EC





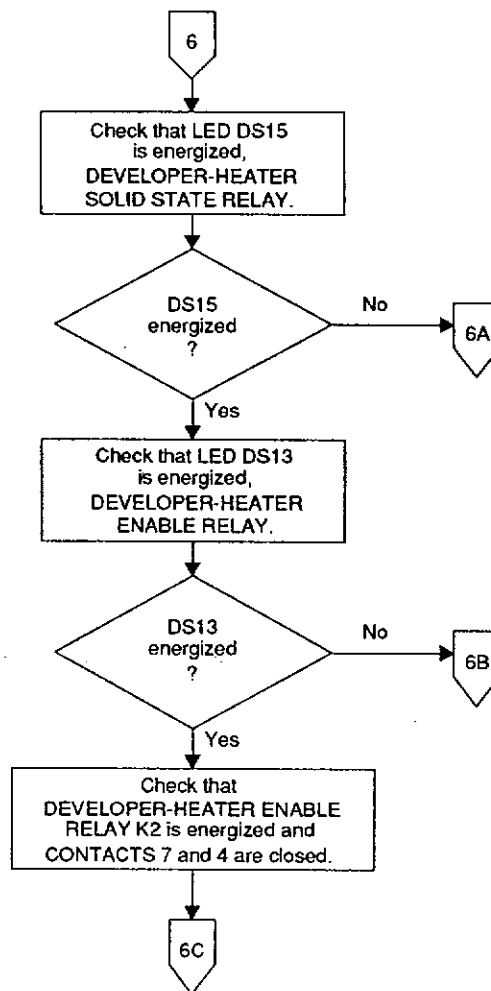
## No. 6 Developer LEDs DS5 (300 Bd) or DS6 (400 Bd) are Deenergized

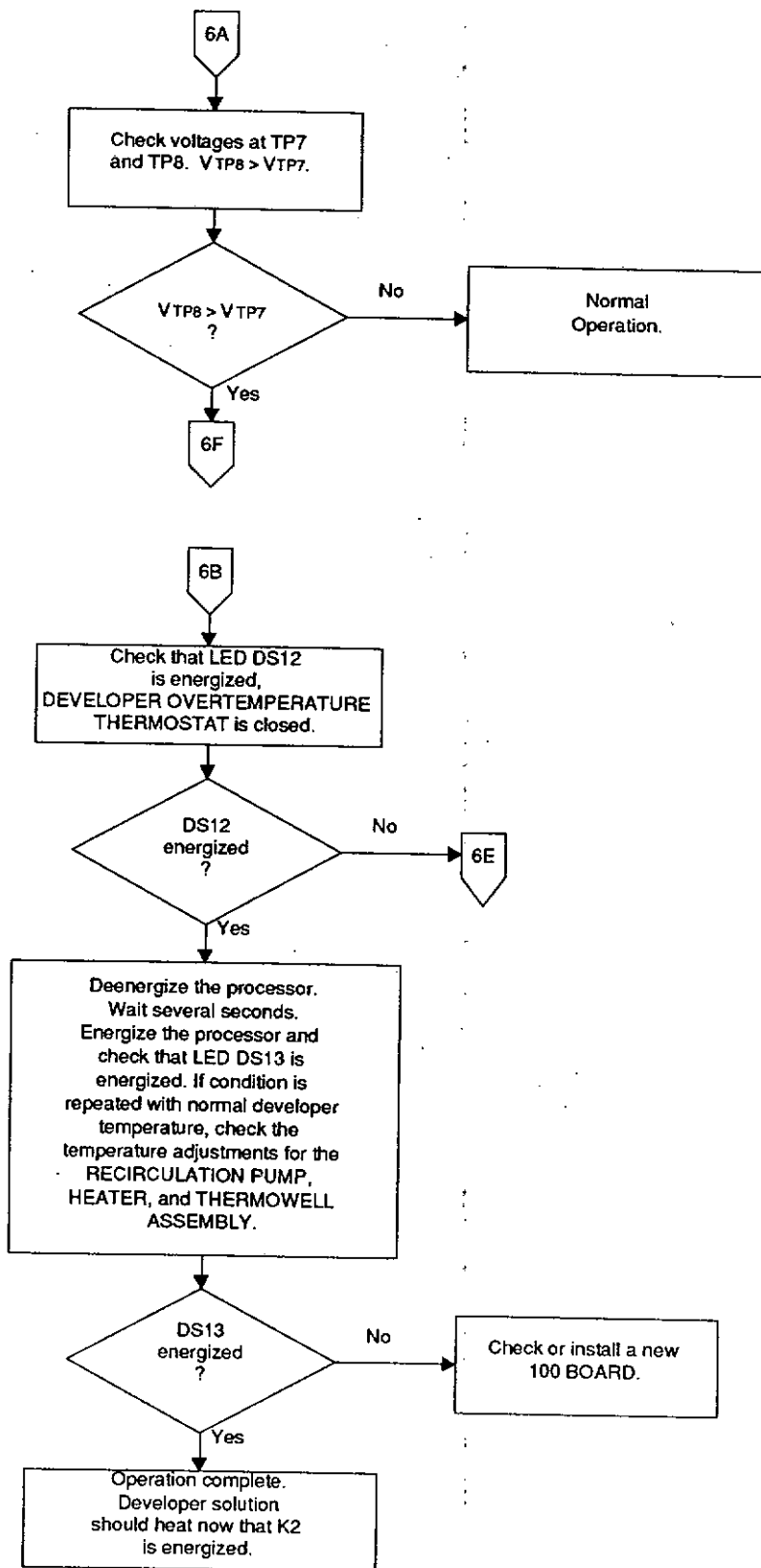
### Condition:

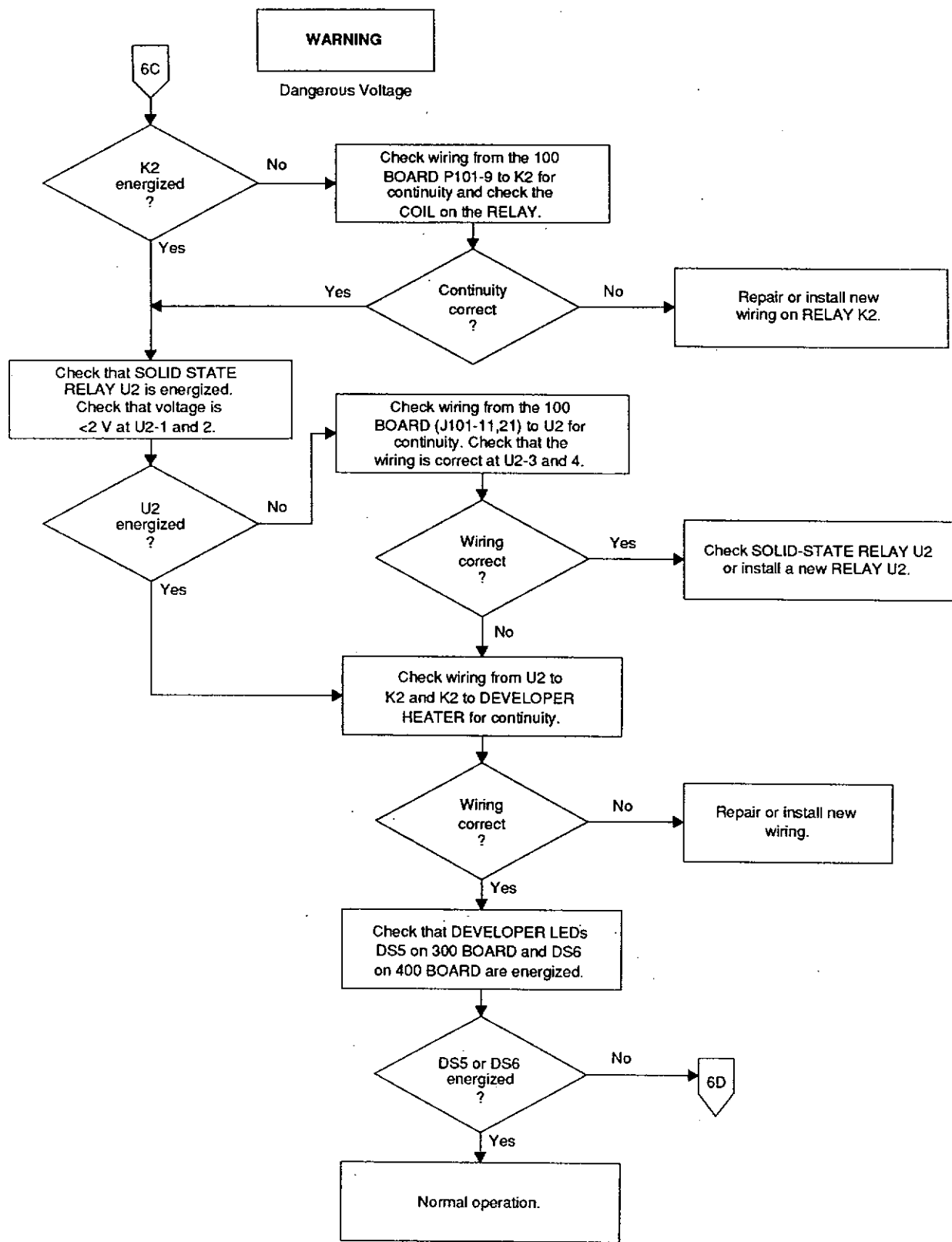
- The Developer LEDs are not illuminated.
- The Connectors P/J1,2,3 and P/J8 are connected and locked.
- The Solid-State Relay is not energized.



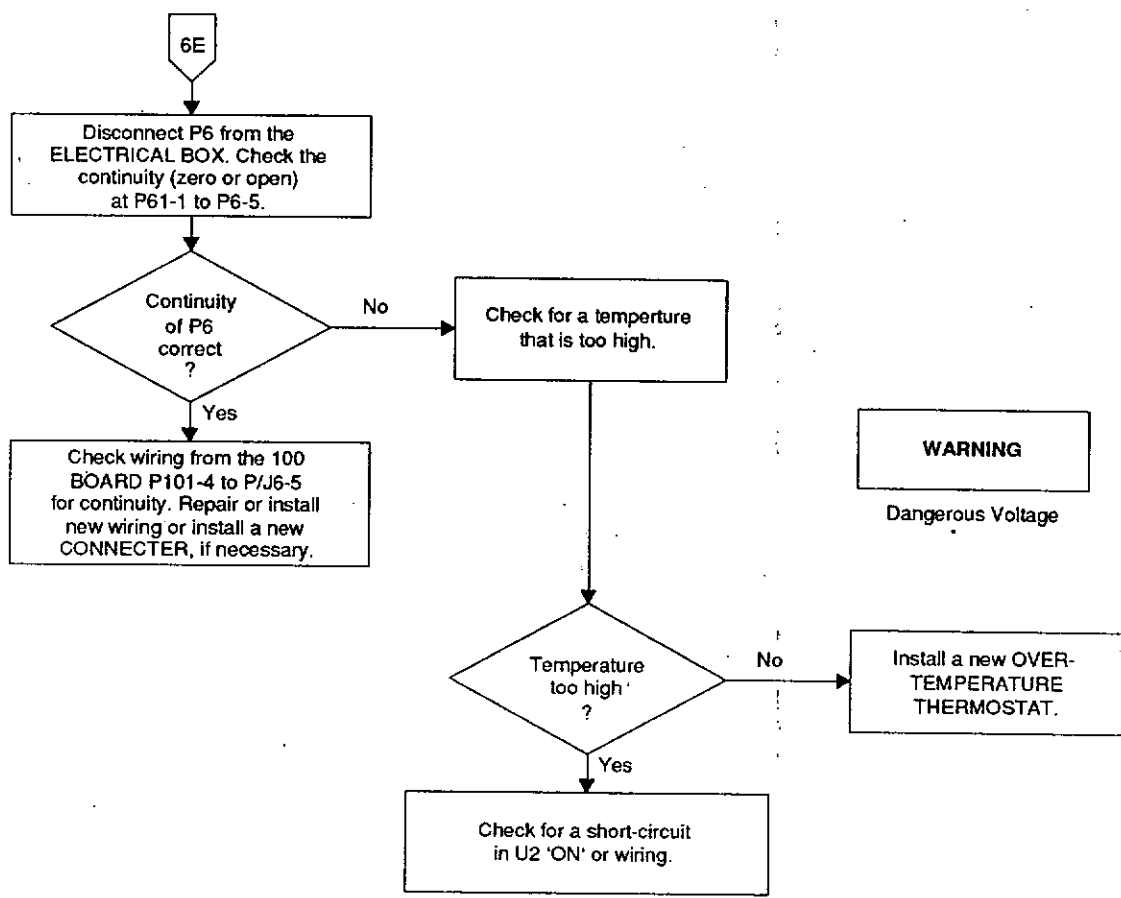
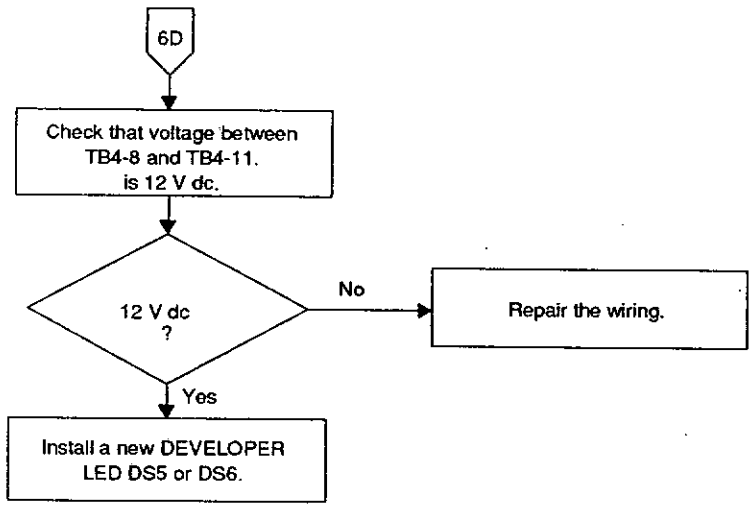
Possible damage from electrostatic discharge.





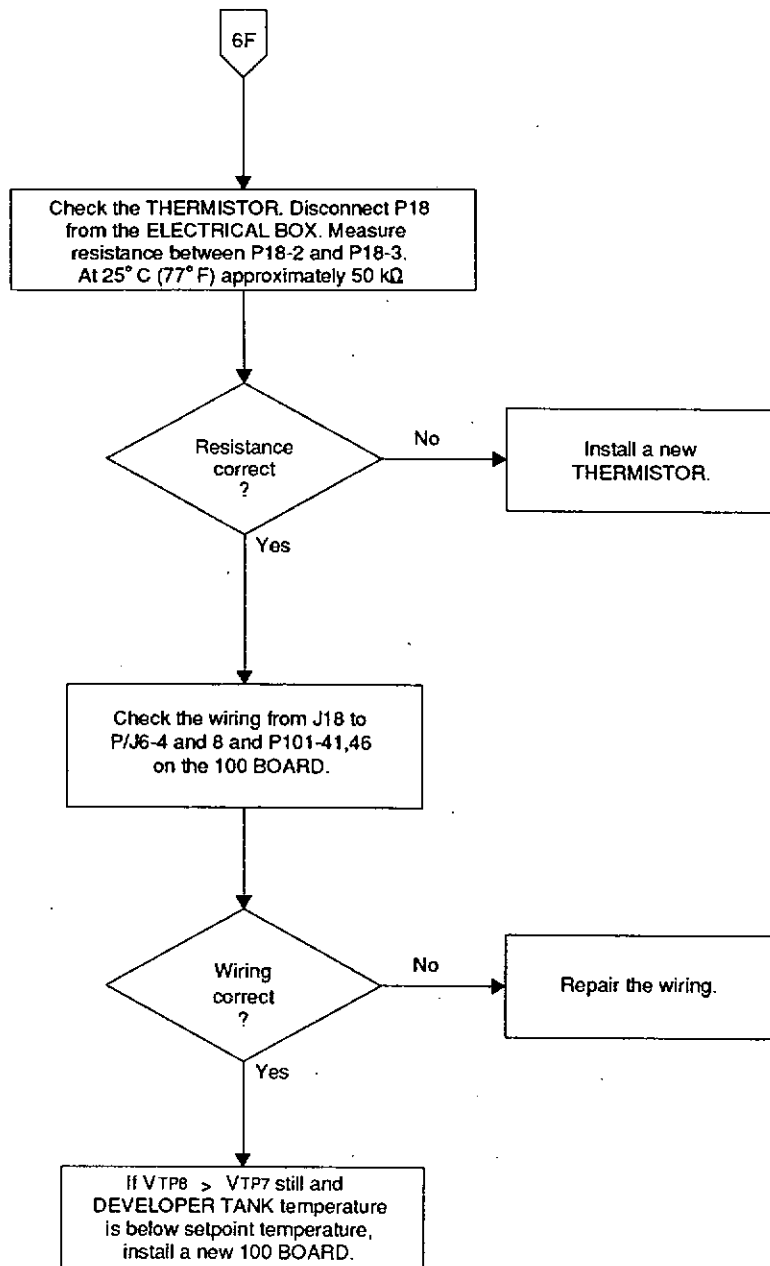






Developer LEDs DS5 and DS6

H136\_9062EC



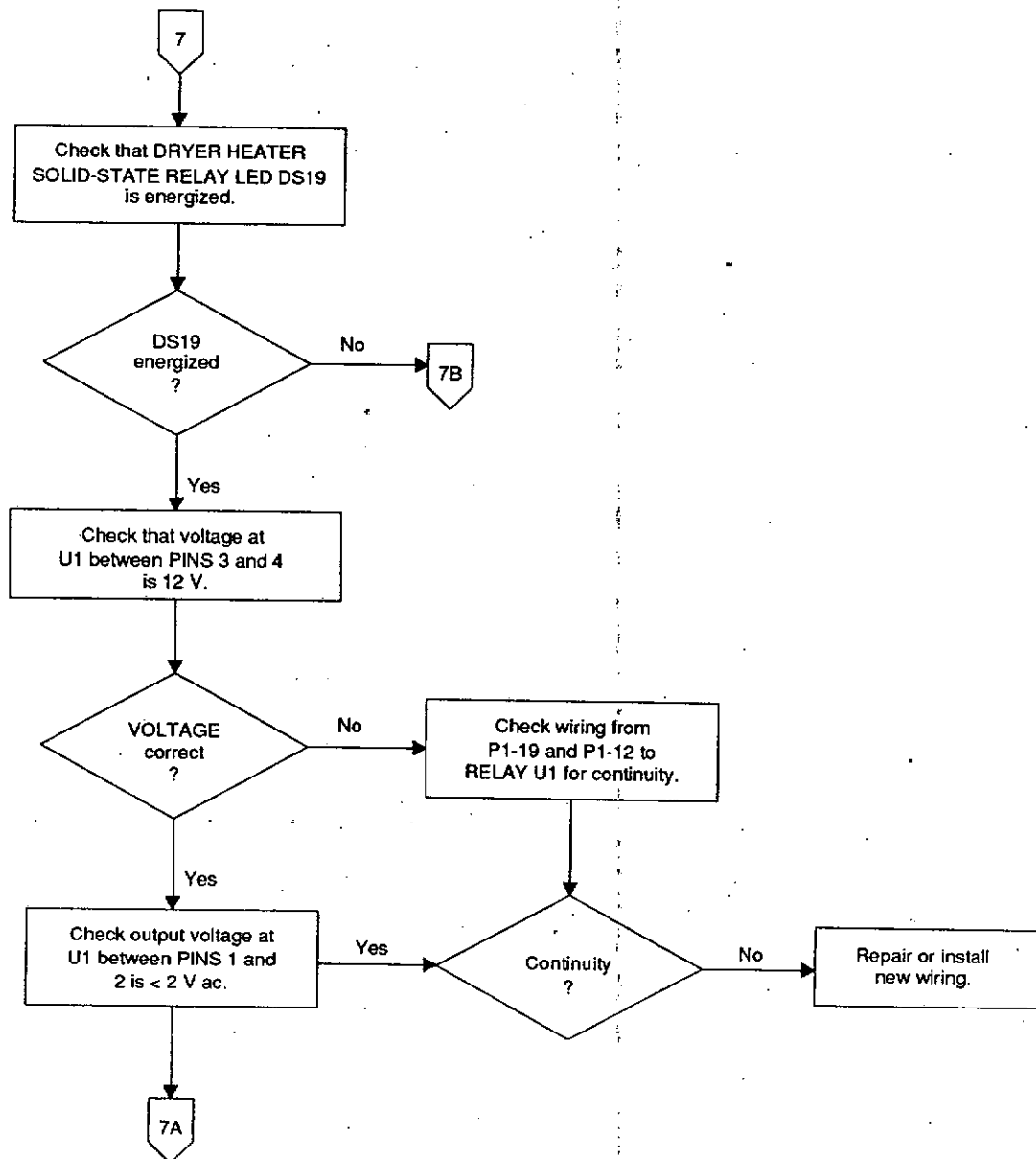
## No. 7 Dryer Lamp DS5 is Deenergized

Assumption: Dryer temperature is below setpoint.

Condition: The Connectors P/J1,2,4 and P/J14 are connected and locked.

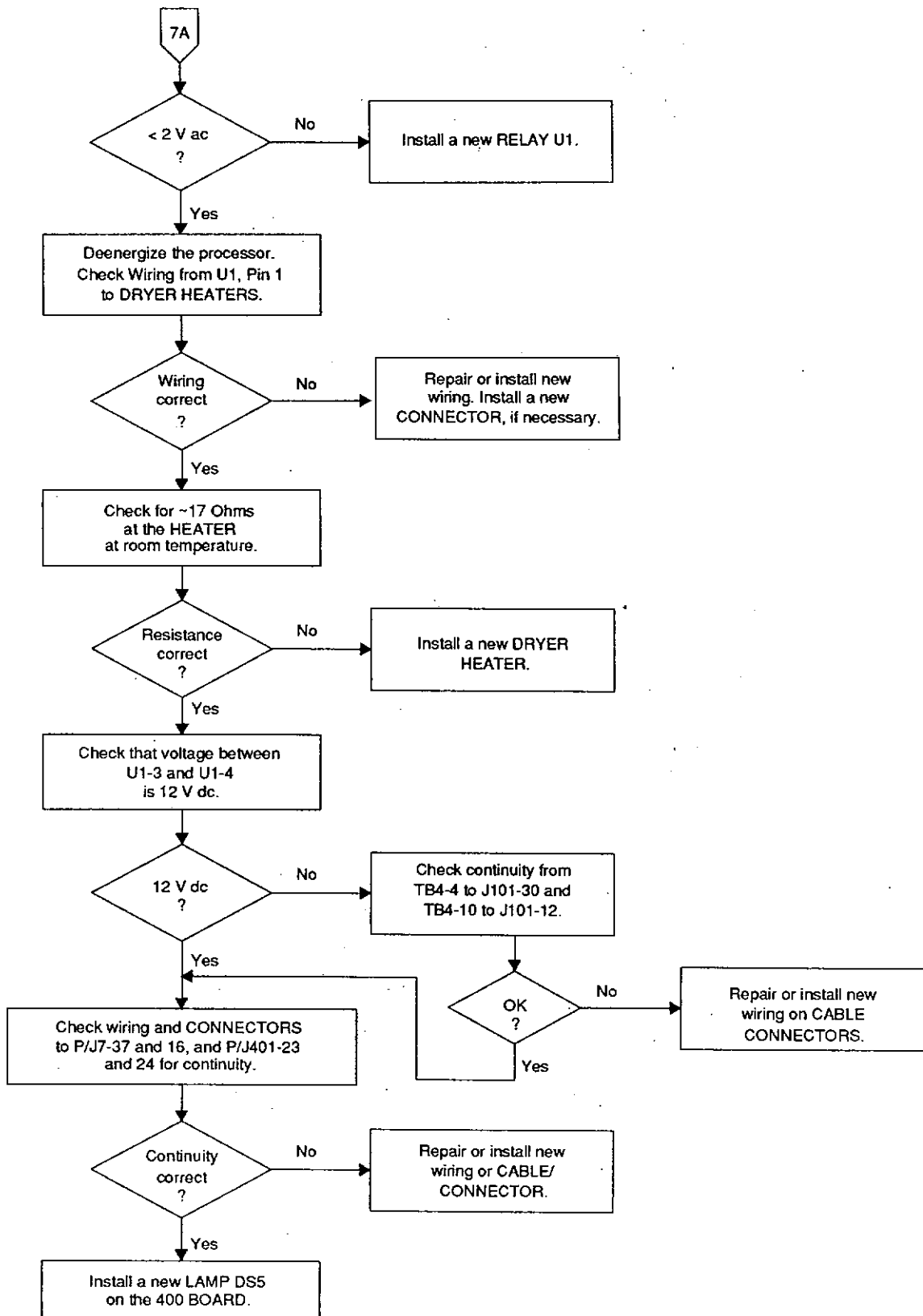
**CAUTION**

Possible damage from electrostatic discharge.



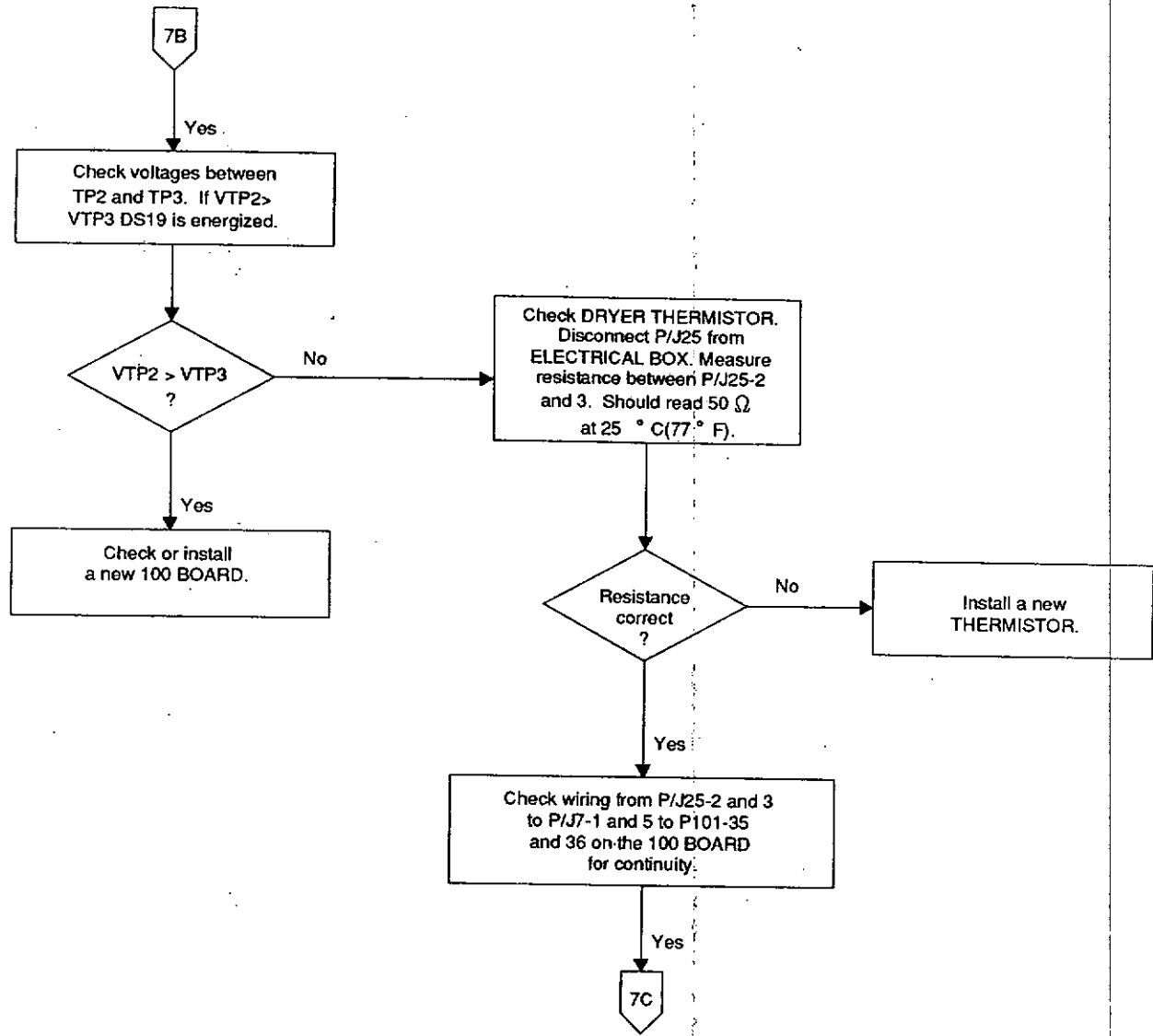
Dryer Lamp DS5 is Off

H136\_9021DC



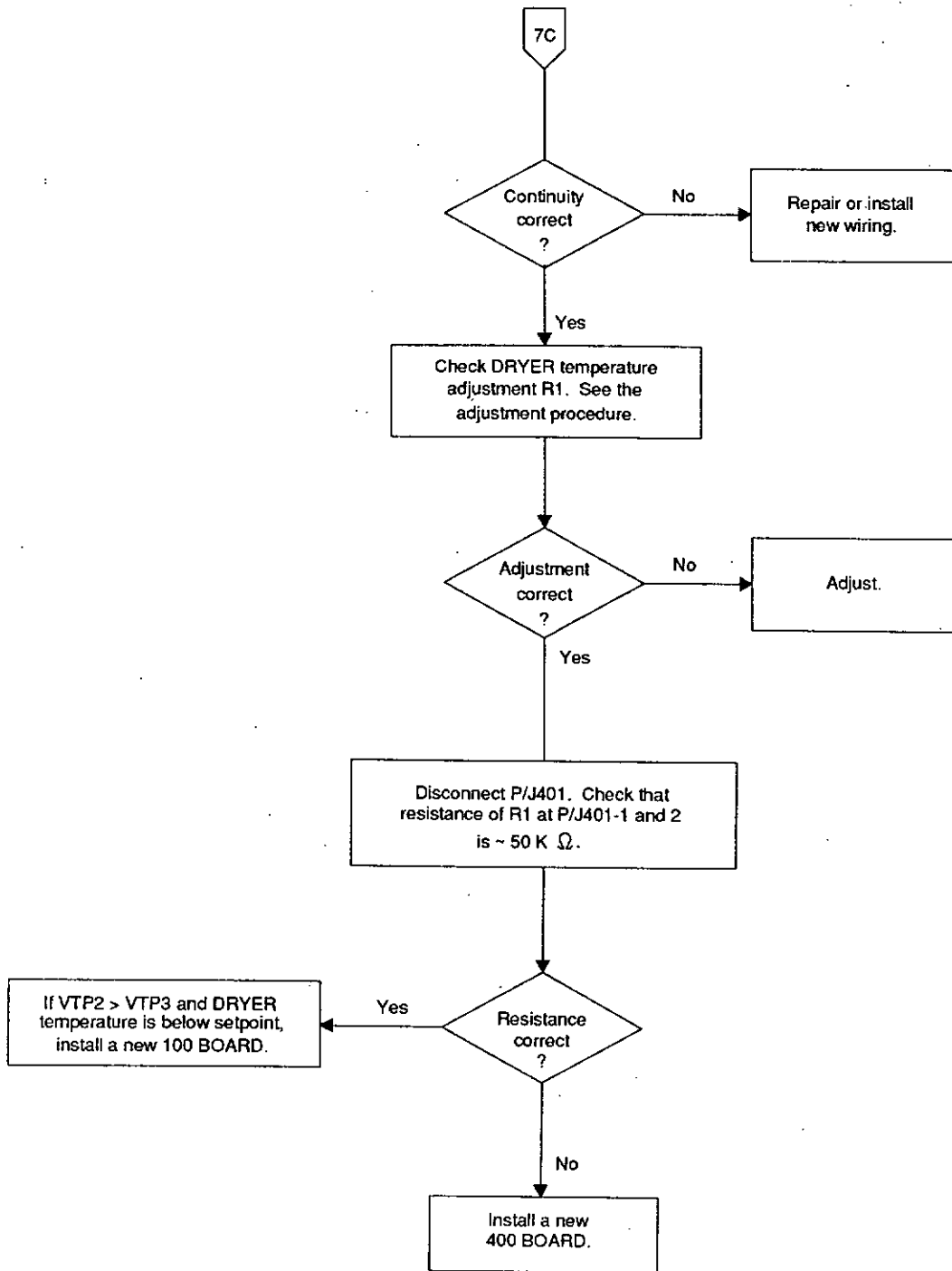
Dryer Lamp DS5 is Off

H136\_9022EC



Dryer Lamp DS5 is Off

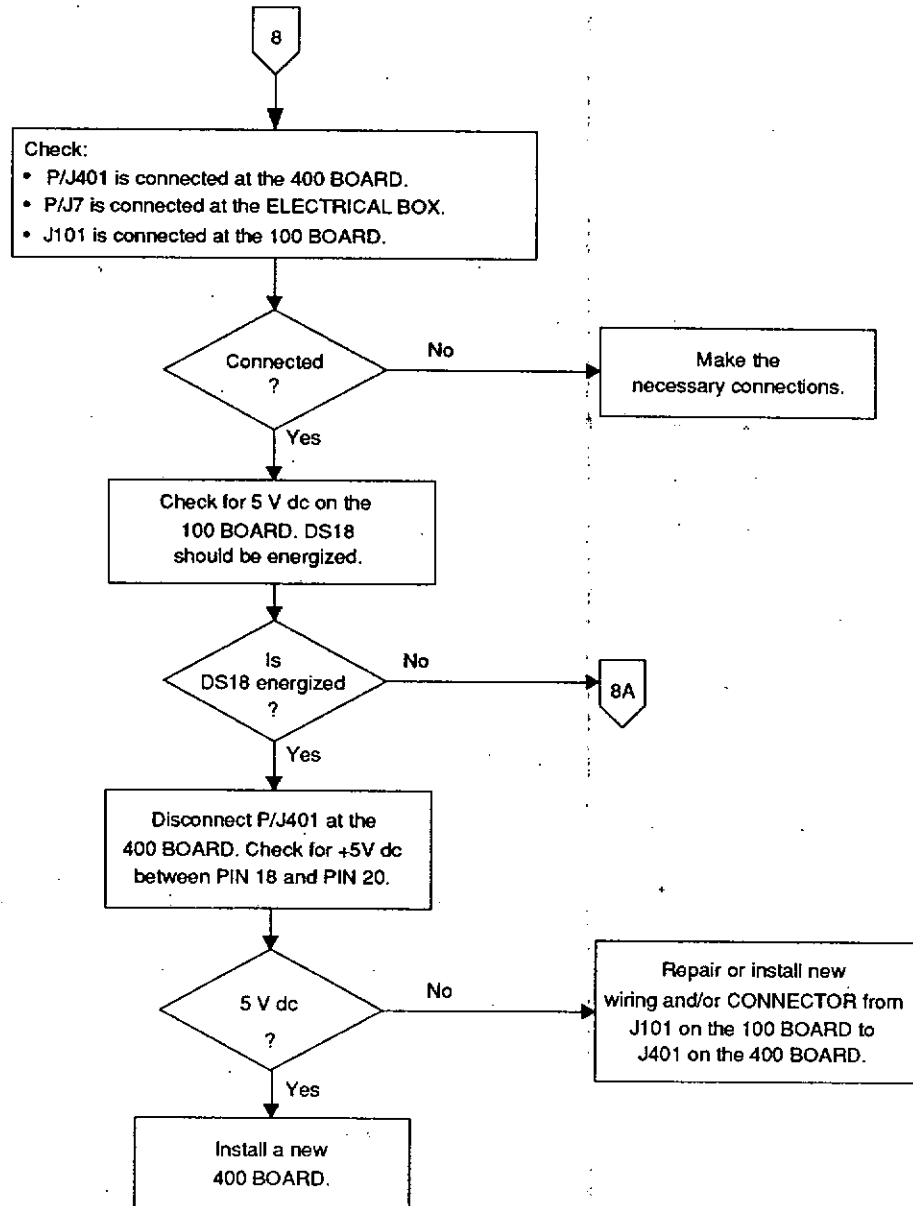
H136\_9023EC



# No. 8 Developer Meter is not Energized

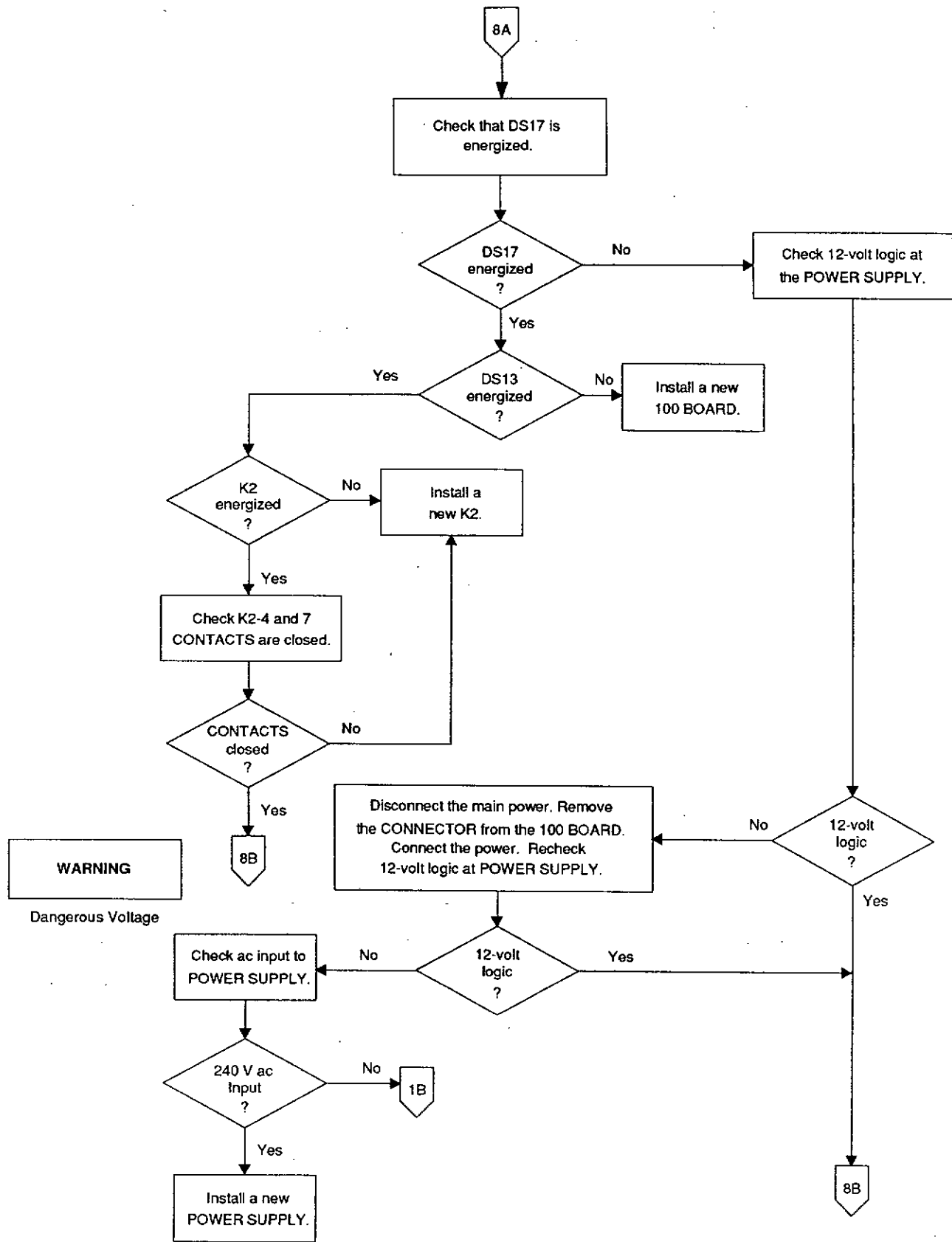
**CAUTION**

Possible damage from electrostatic discharge.

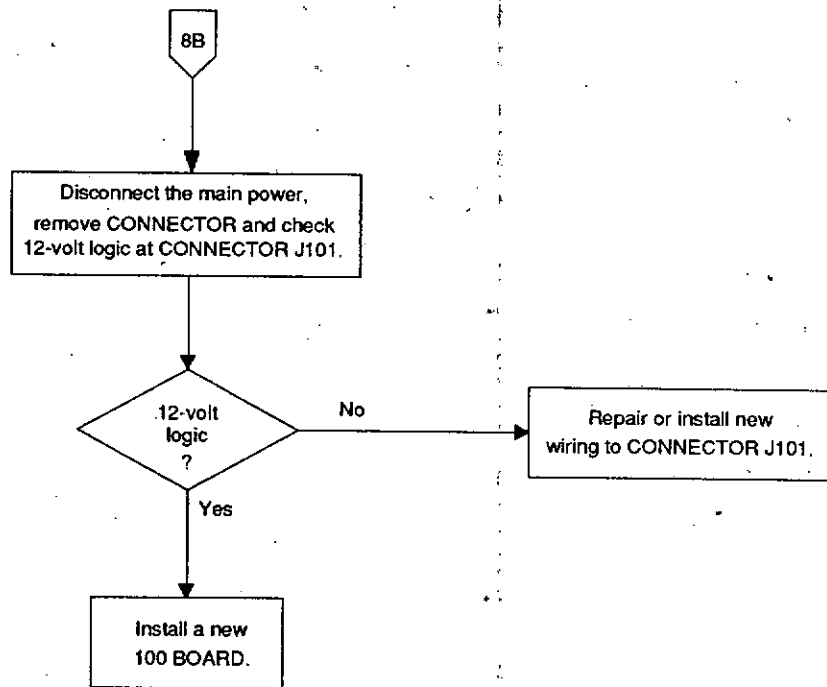


Developer Meter Is Not Energized

H136\_9042DC







Developer Meter Is Not Energized

H136\_9044DC

## No. 9 Developer Temperature is not Increasing

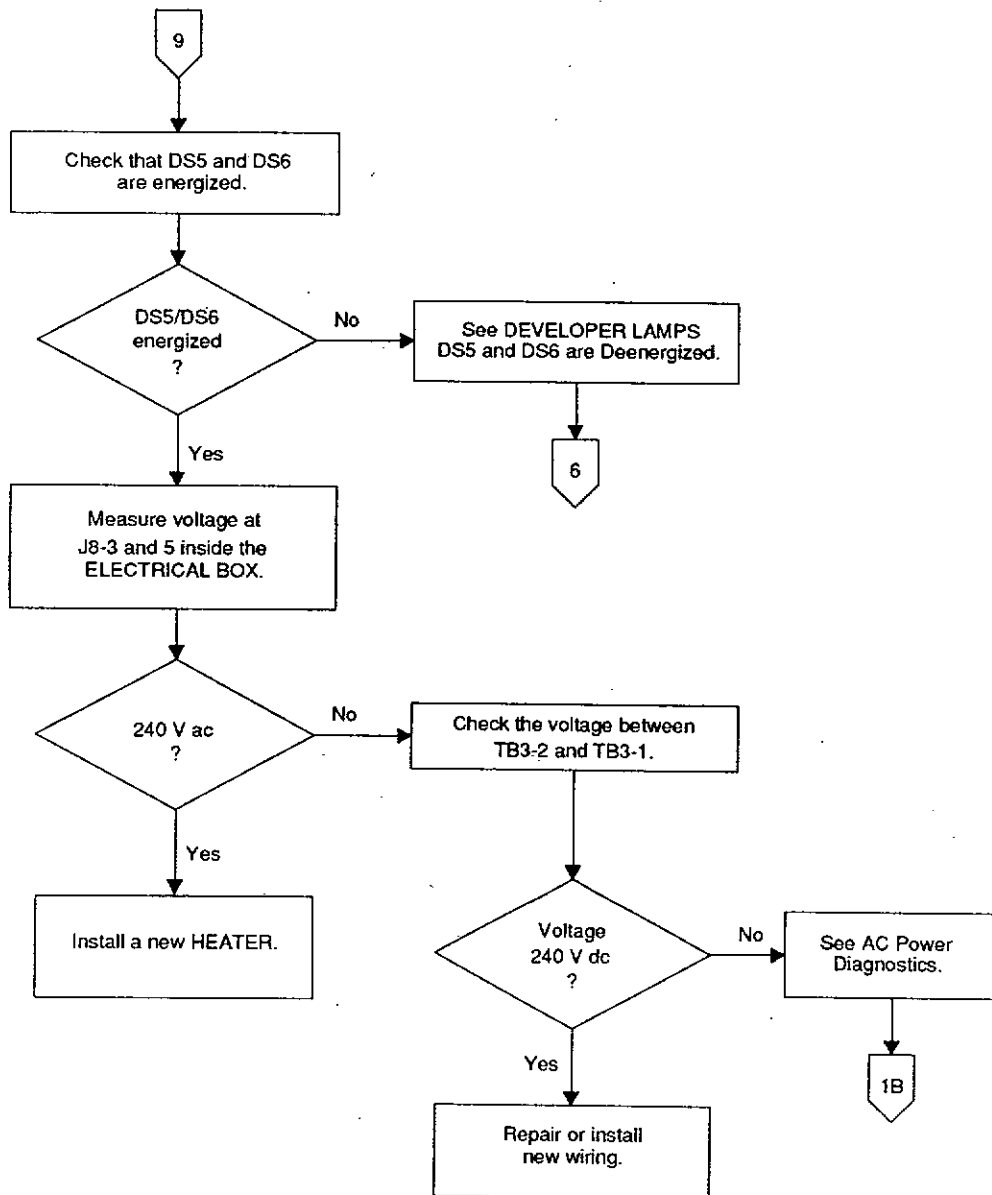
Condition: Connector P/J8 is connected correctly.

**WARNING**

Dangerous Voltage

**CAUTION**

Possible damage from electrostatic discharge.



# No. 10 Dryer is not Heating

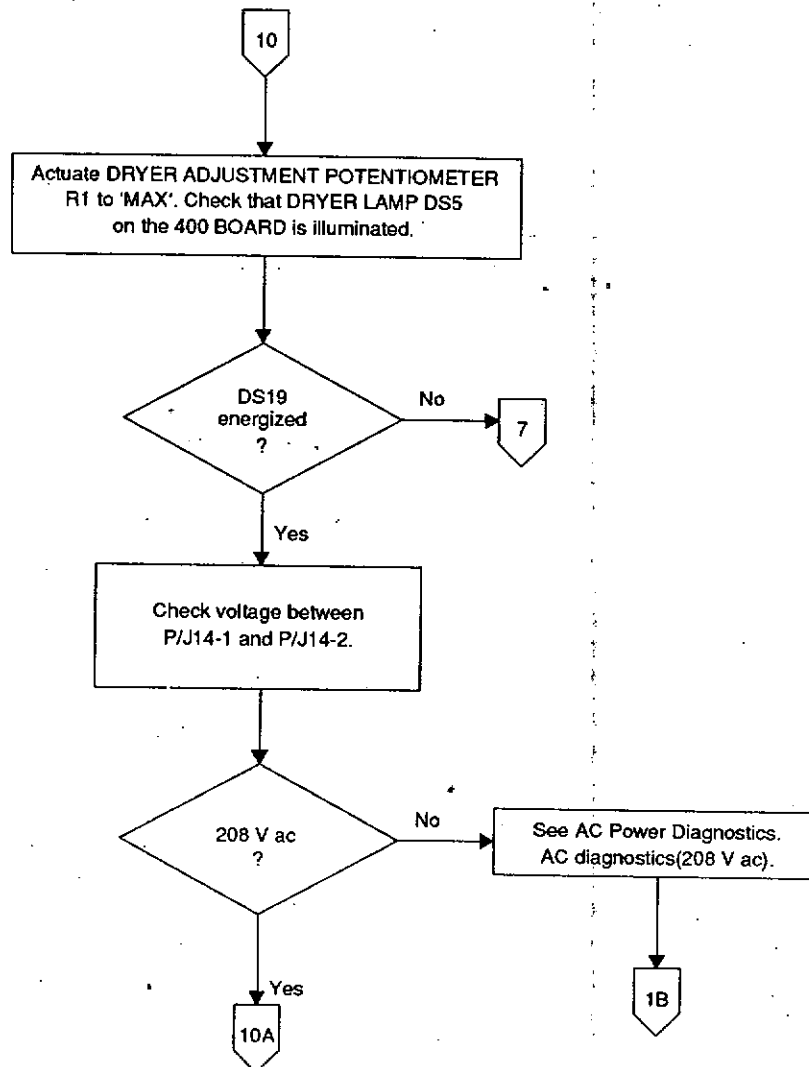
Condition: The Connector P/J14 is connected correctly.

**WARNING**

Dangerous Voltage

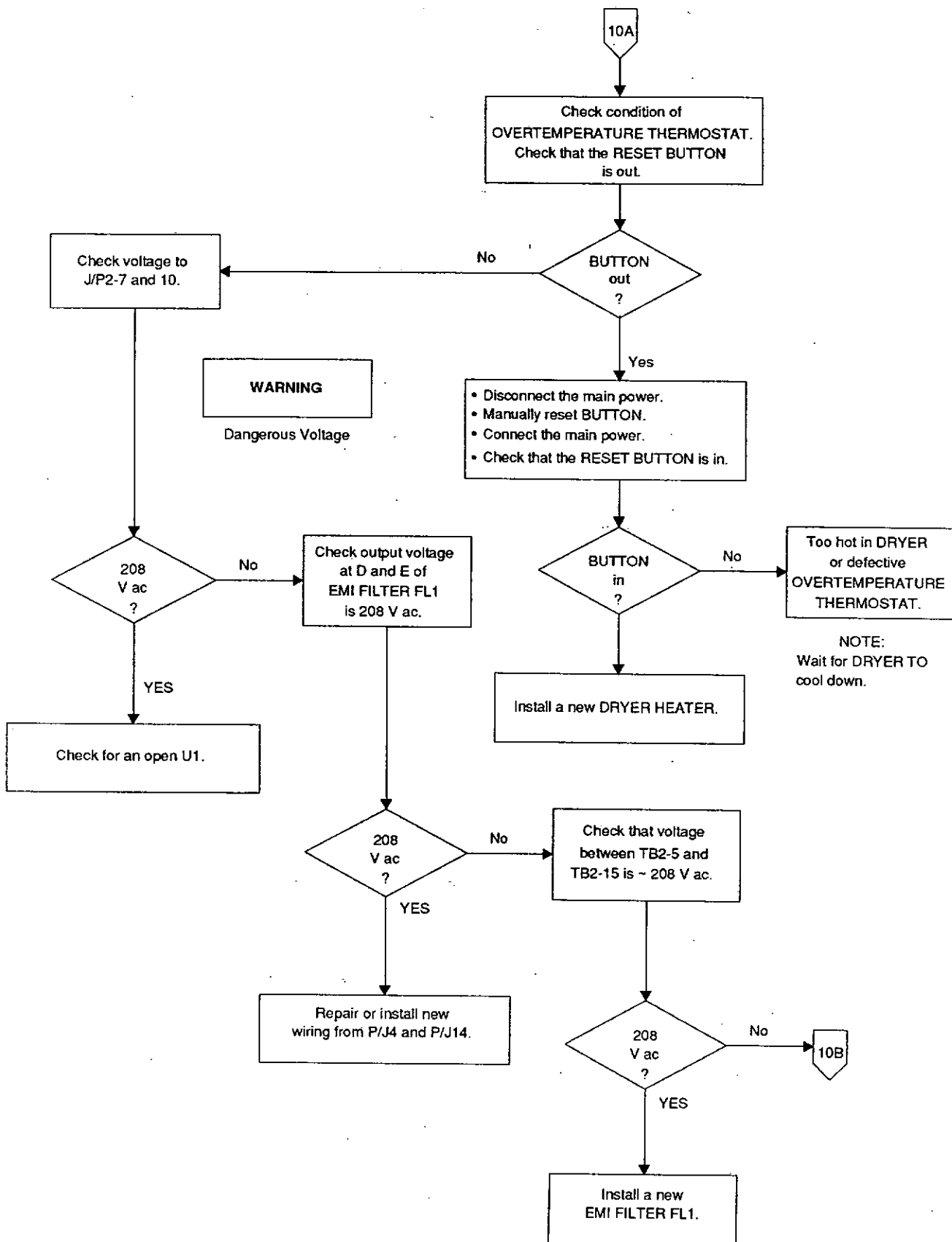
**CAUTION**

Possible damage from electrostatic discharge.



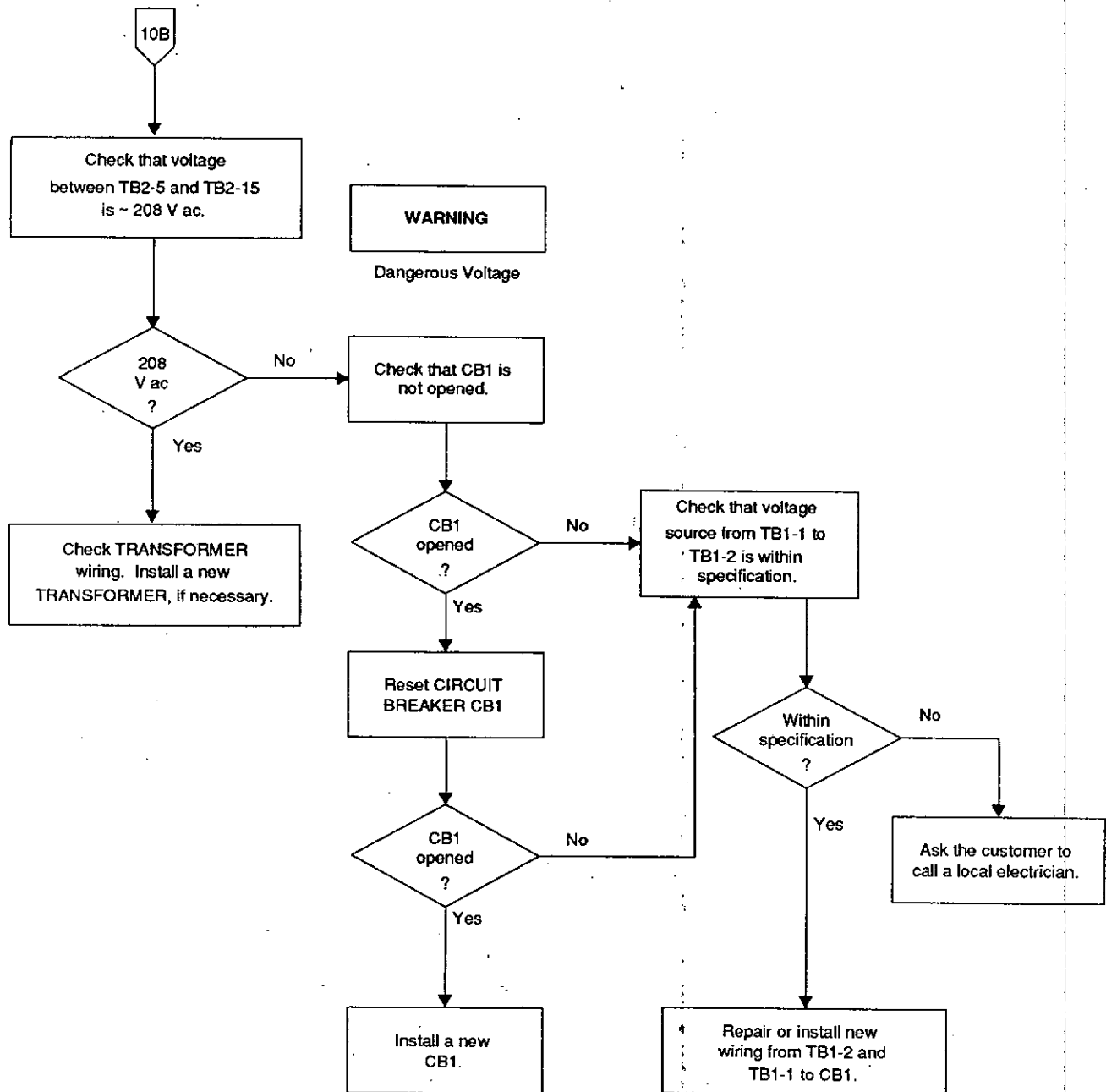
Dryer is not Heating

H136\_9034DC



Dryer is not Heating

H136\_9026EC



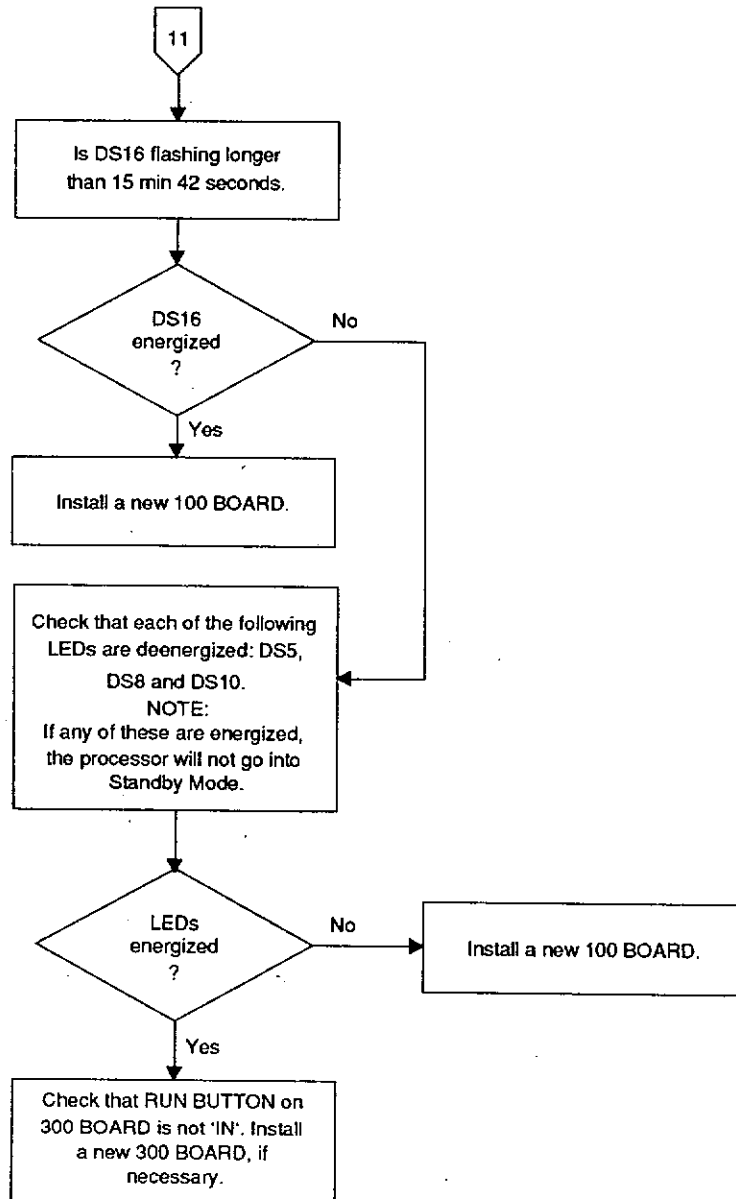
Dryer is not Heating

H136\_9028EC

# No. 11 Processor Will Not Go into the Standby Mode

**CAUTION**

Possible damage from electrostatic discharge.



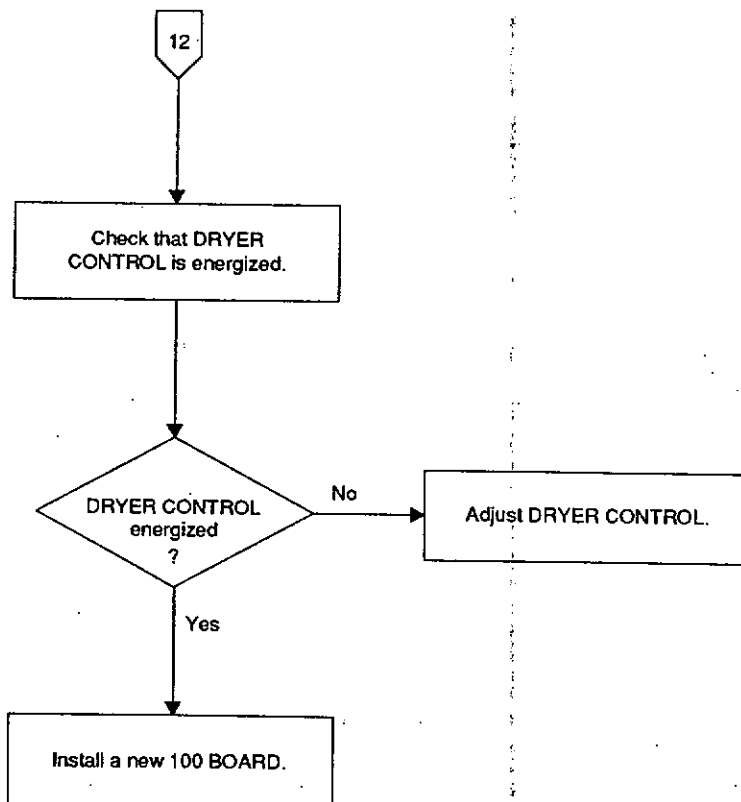
## No. 12 Processor Will Not Come Out of "Standby"

### Condition:

- The processor is in the "Bypassed" mode.
- The processor remains in "Standby" after 9 minutes 30 seconds.

### CAUTION

Possible damage from electrostatic discharge.

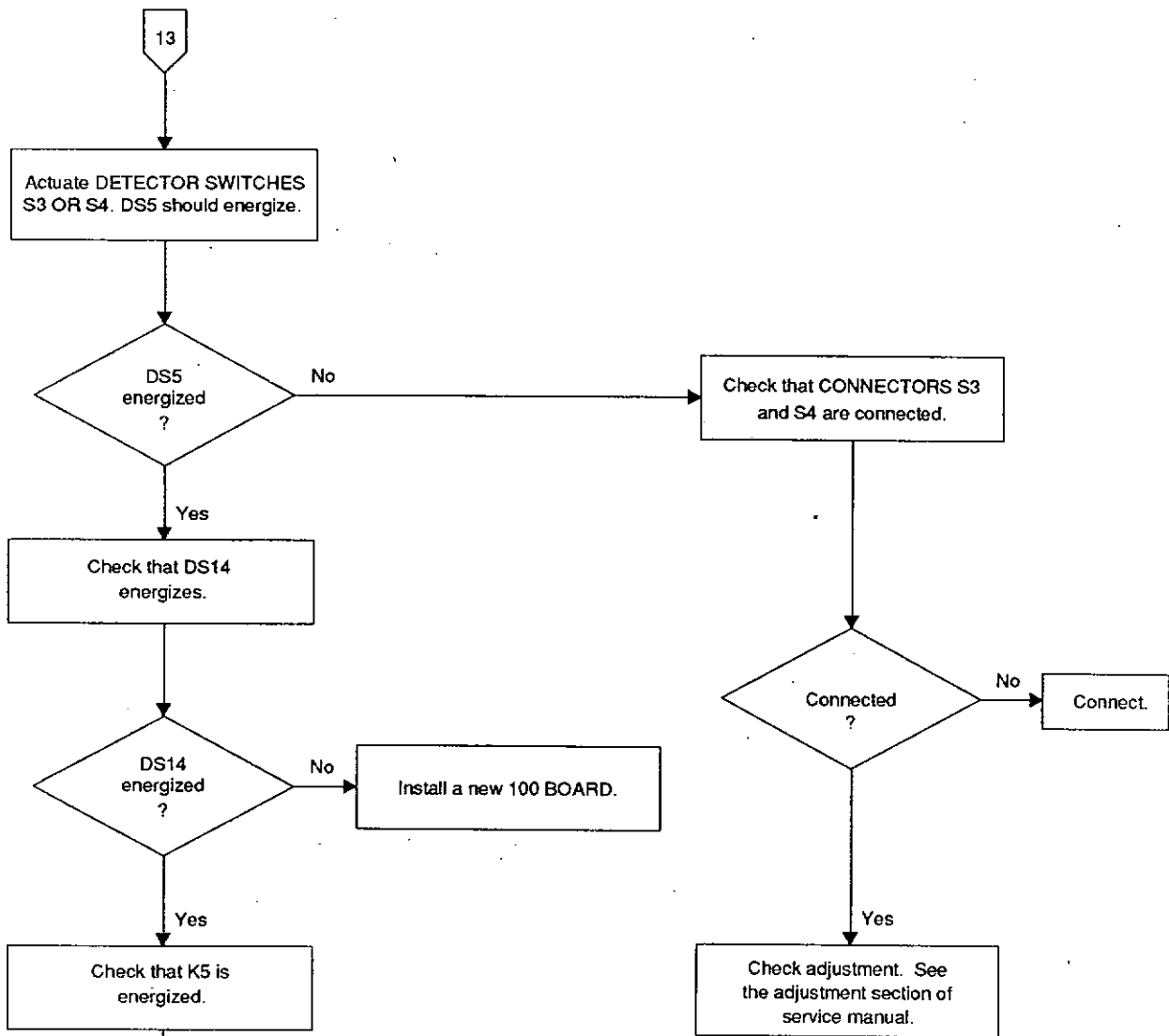


# No. 13 Replenishment is not Occurring

Condition: The Connector P/J12 is connected correctly.



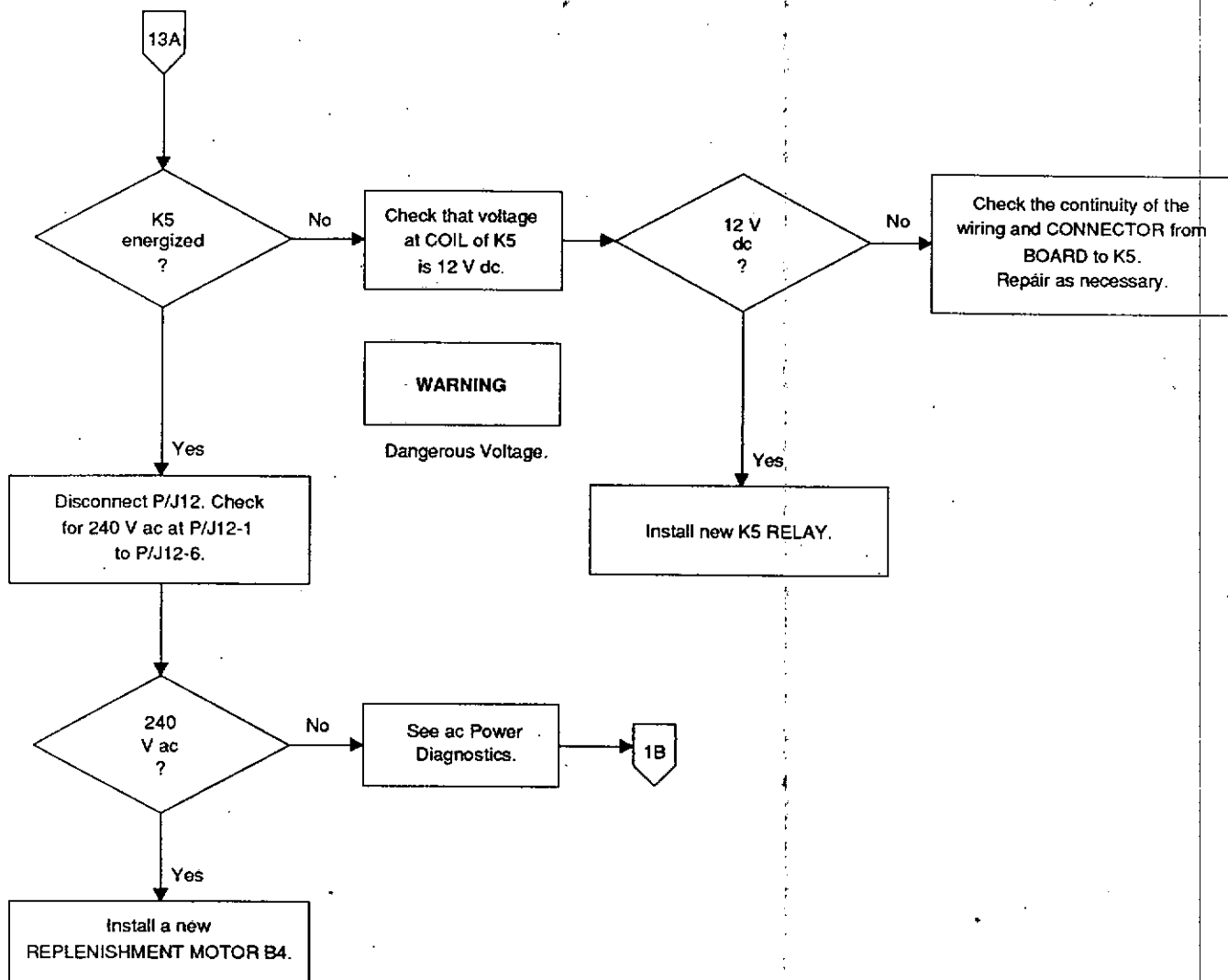
Possible damage from electrostatic discharge.



No REPLENISHMENT

H136\_9037DC





No REPLENISHMENT

H136\_9038DC

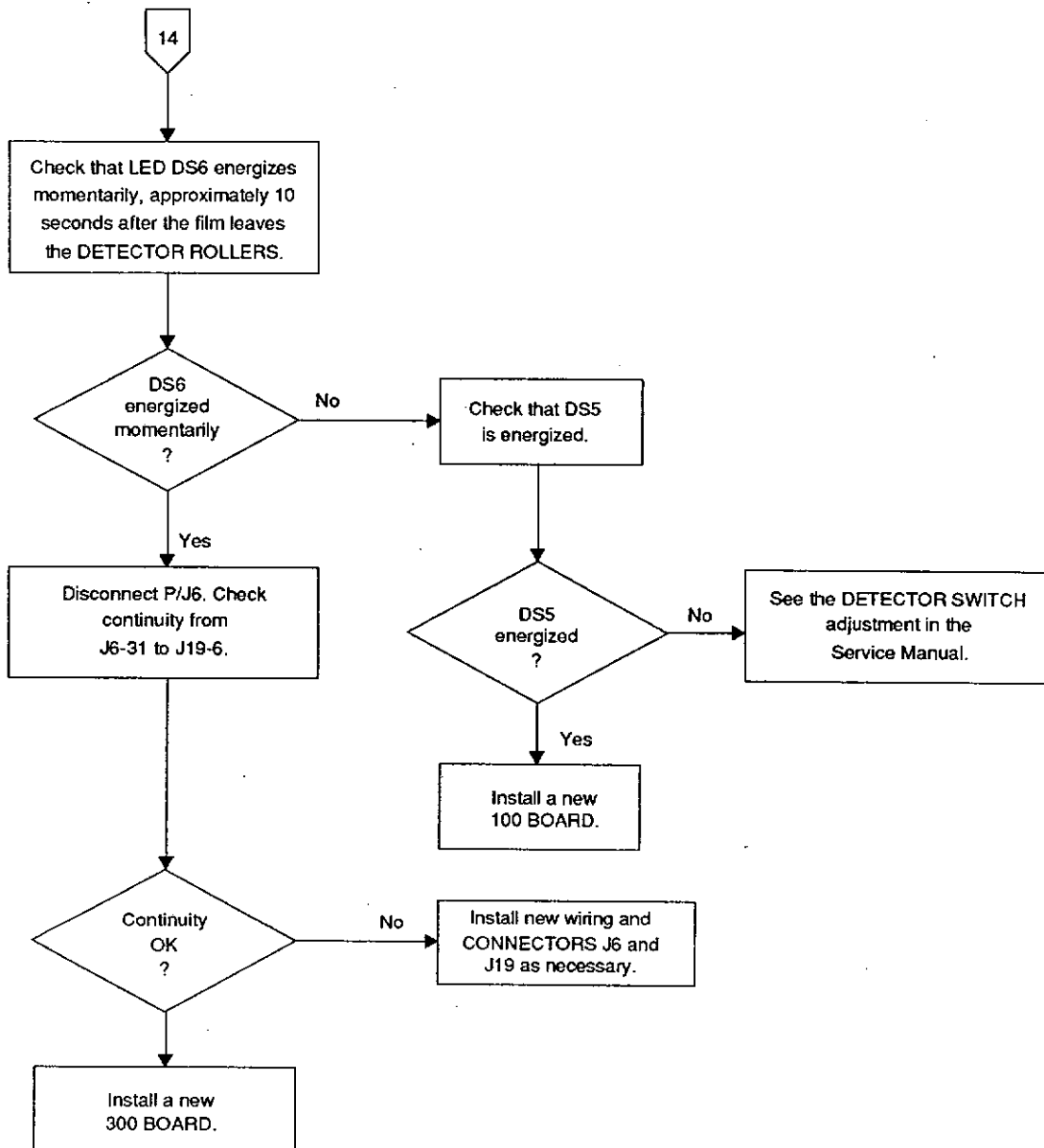
# No. 14 Film Feed Audio Indicator DS7 is not Operating

## Condition:

- The Connectors P/J6, 19, 101, and 301 are connected correctly.
- Film is being fed into the processor.



Possible damage from electrostatic discharge.



No Audio Indicator DS7

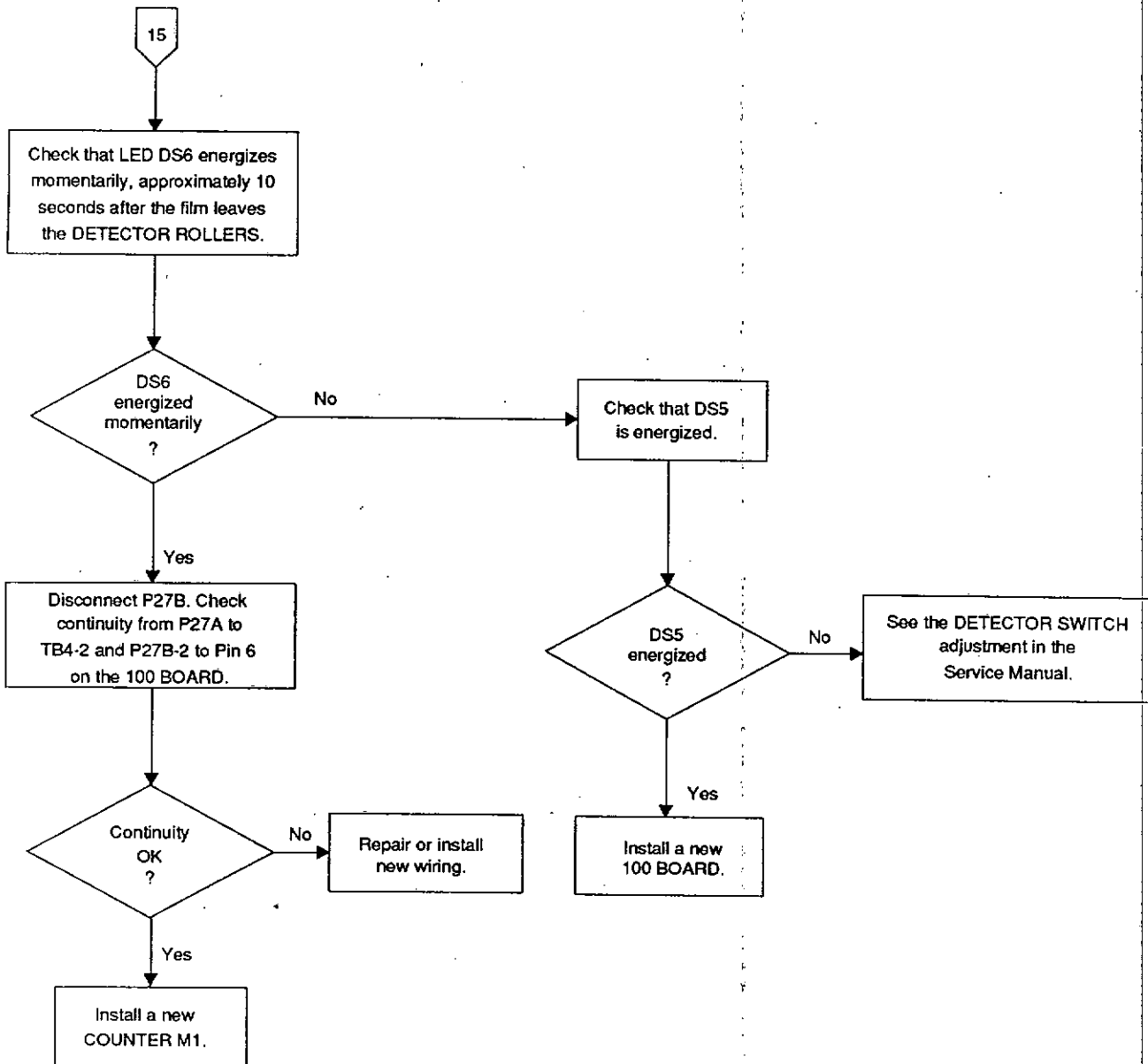
H136\_9039DC

# No. 15 Counter M1 is not Operating

Condition: Film is being fed into the processor.

**CAUTION**

Possible damage from electrostatic discharge.

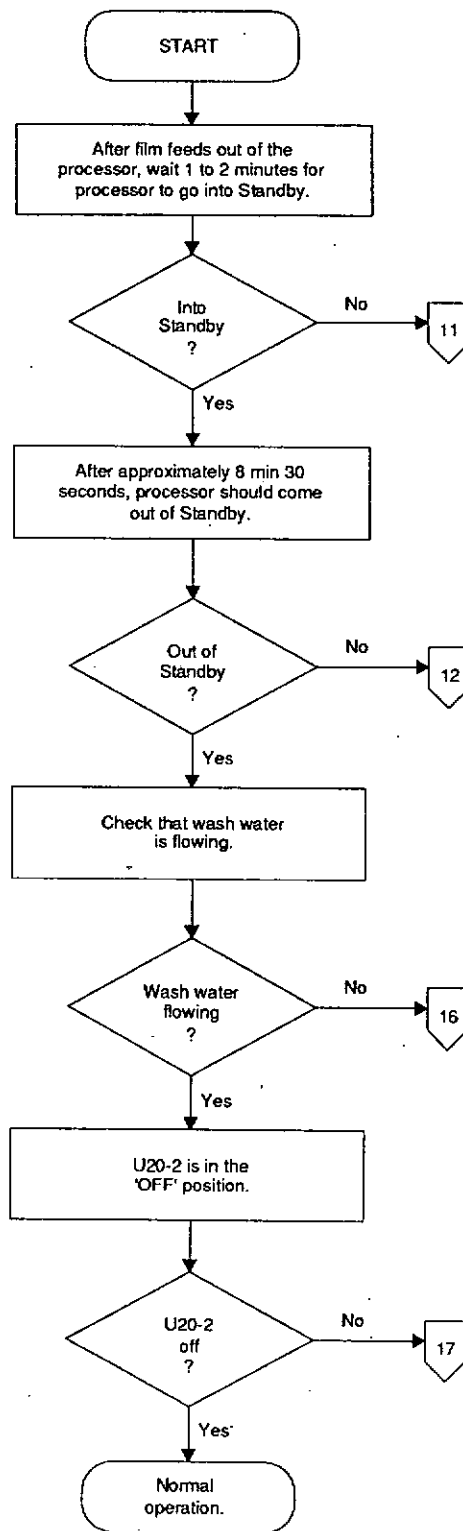


No Counter M1

H136\_9040DC

# Standby Mode

## Overview



Standby Mode

H136\_9041 EC

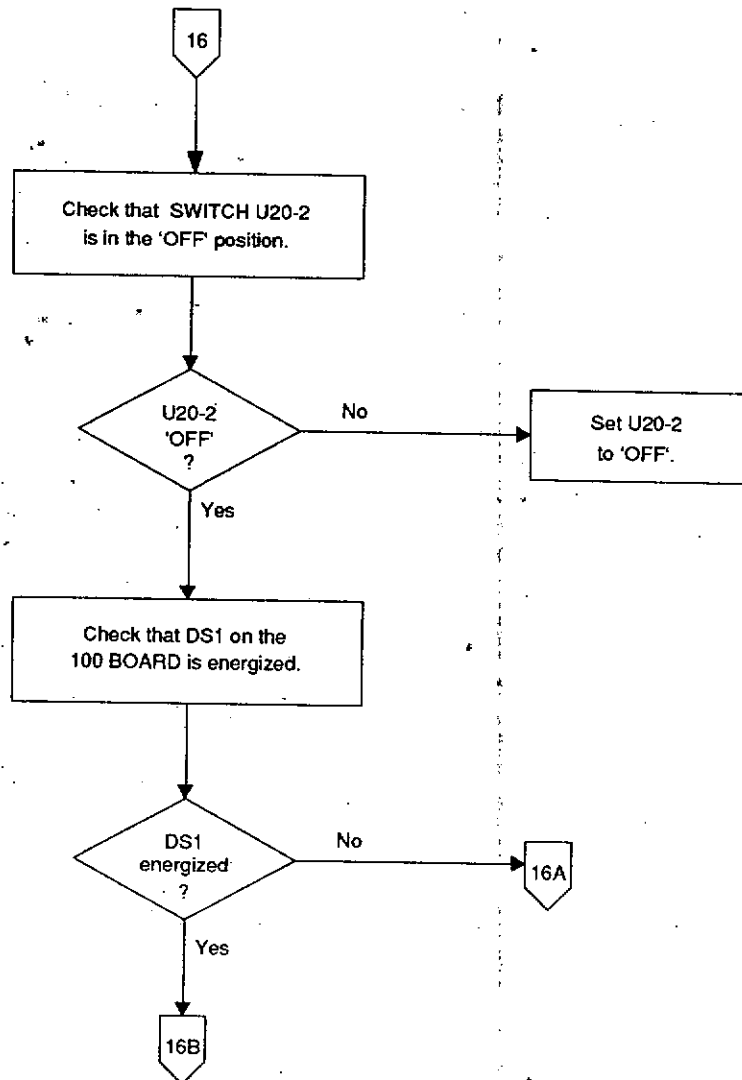
# No. 16 Wash Water not Flowing - Mode 1, Out of Standby

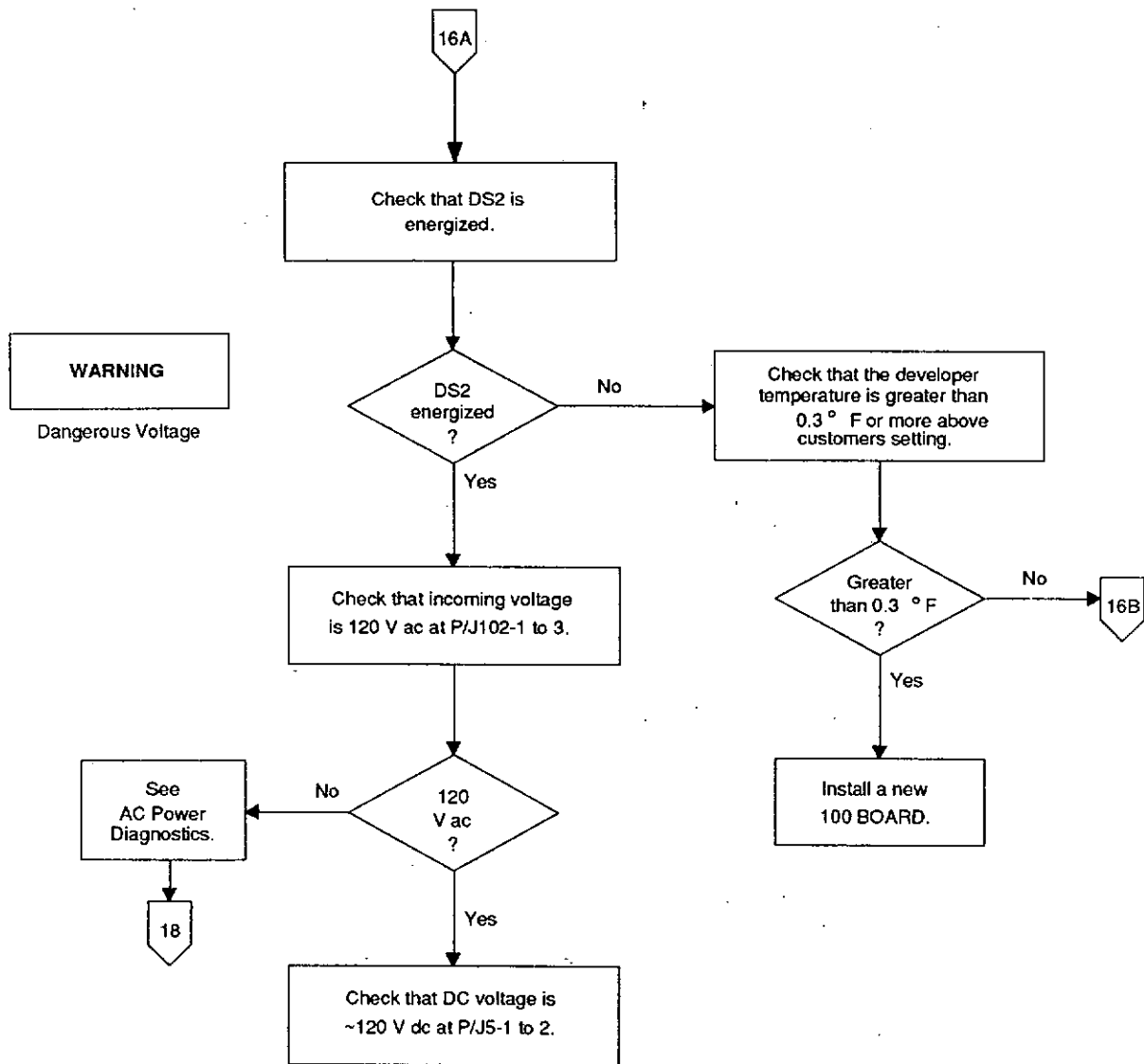
## Condition:

- Mode 1 - wash water is flowing. Dip Switch U20-2 is in the "Off" position.
- Mode 2 - wash water is not flowing, until the "RUN" Button is pressed or the developer solution needs cooling. Dip Switch U20-2 is in the "On" position.

### CAUTION

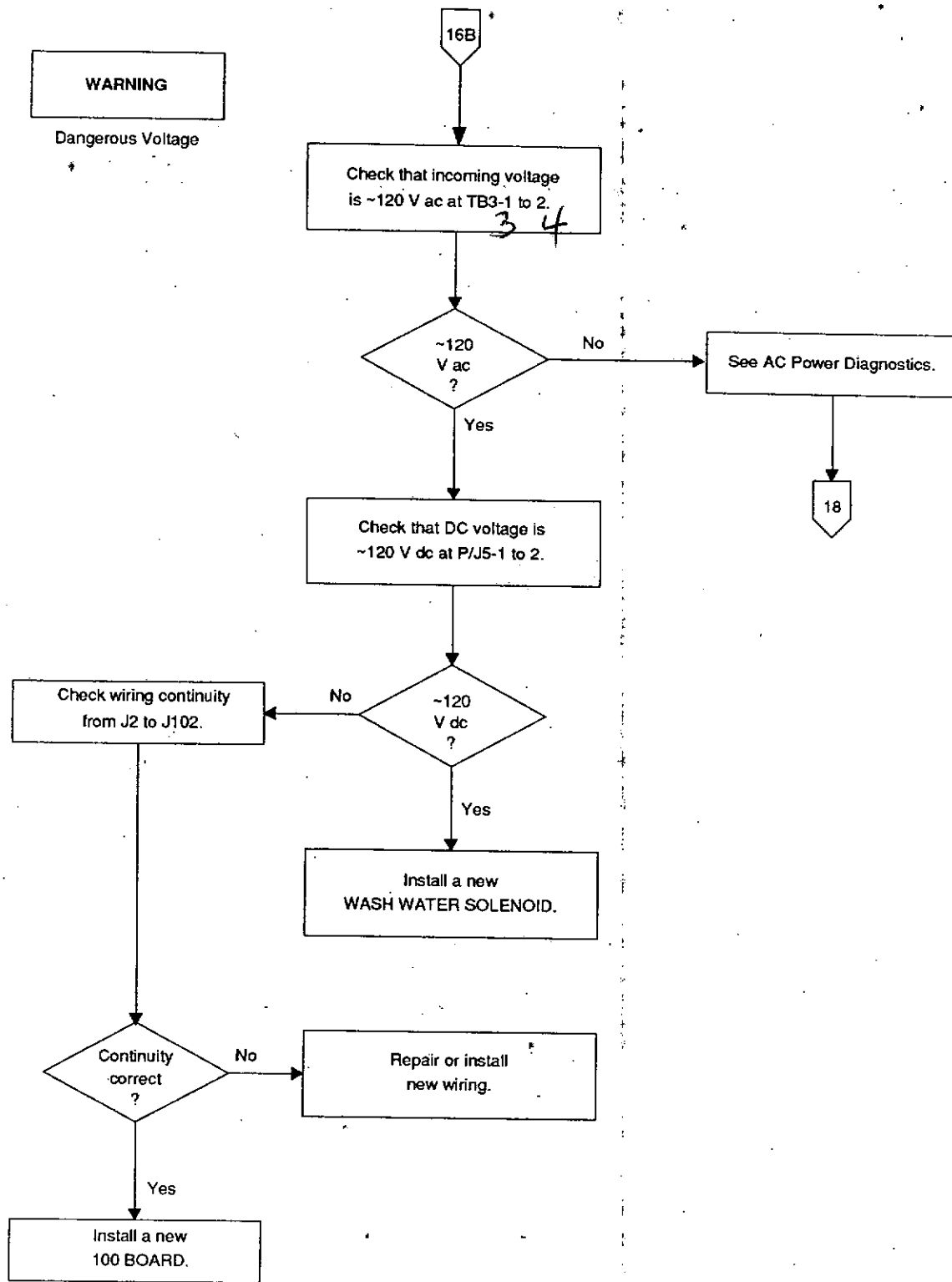
Possible damage from electrostatic discharge.





**WARNING**

Dangerous Voltage



Wash Water Not Flowing

H136\_9047EC

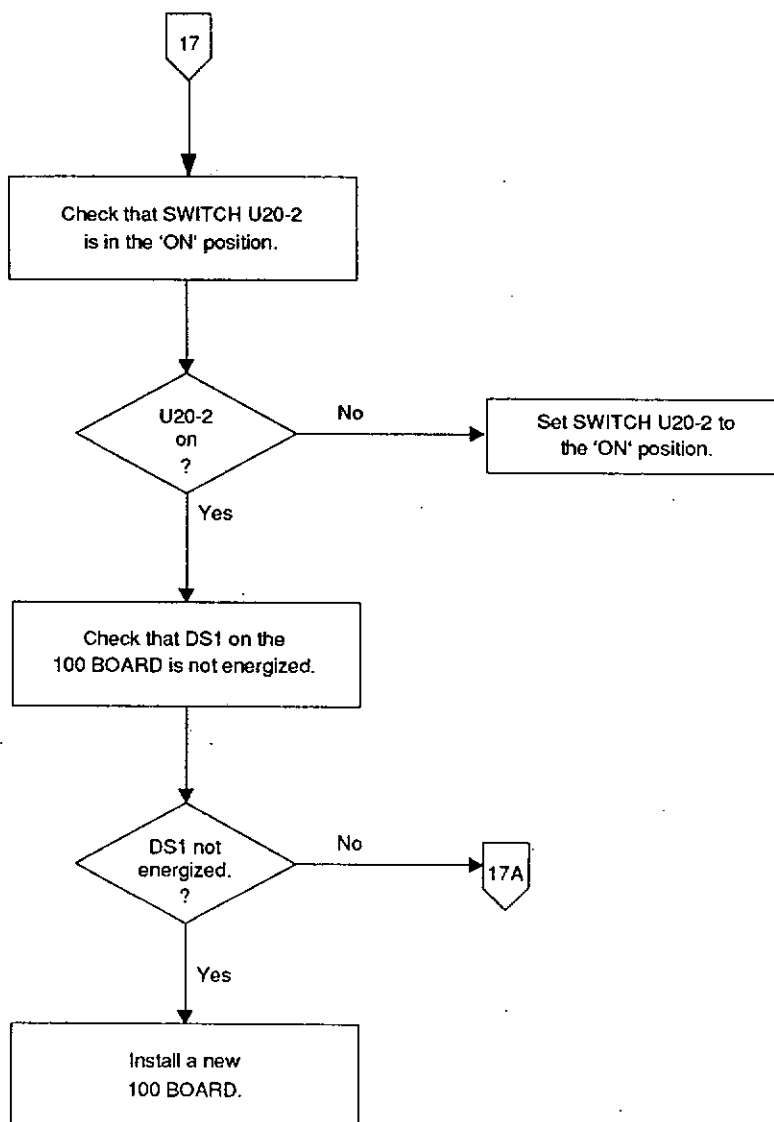
## No. 17 Wash Water Flowing - Mode 2, Out of Standby

### Condition:

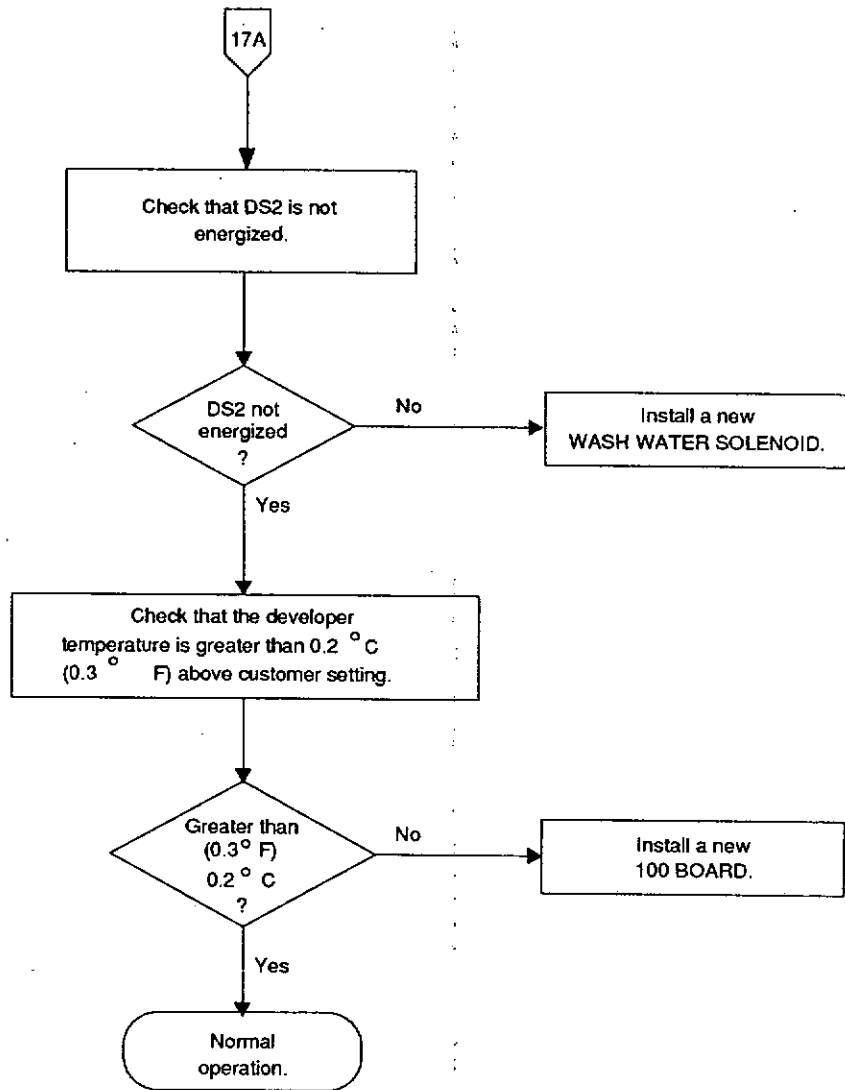
- Mode 1 - wash water is flowing. Dip Switch U20-2 is in the "Off" position.
- Mode 2 - wash water is not flowing, until the "RUN" Button is pressed or the developer solution needs cooling. Dip Switch U20-2 is in the "On" position.

### CAUTION

Possible damage from electrostatic discharge.







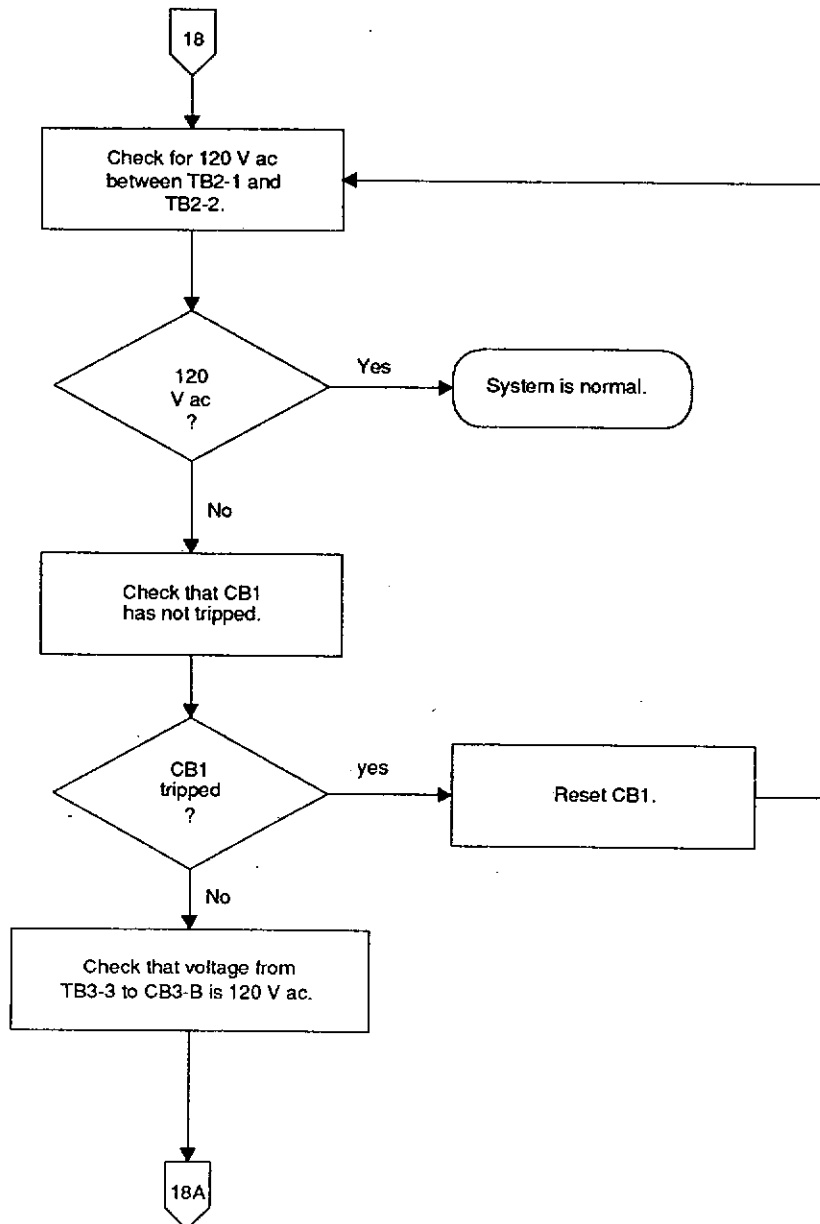
# No. 18 AC Power Diagnostics 120 V ac

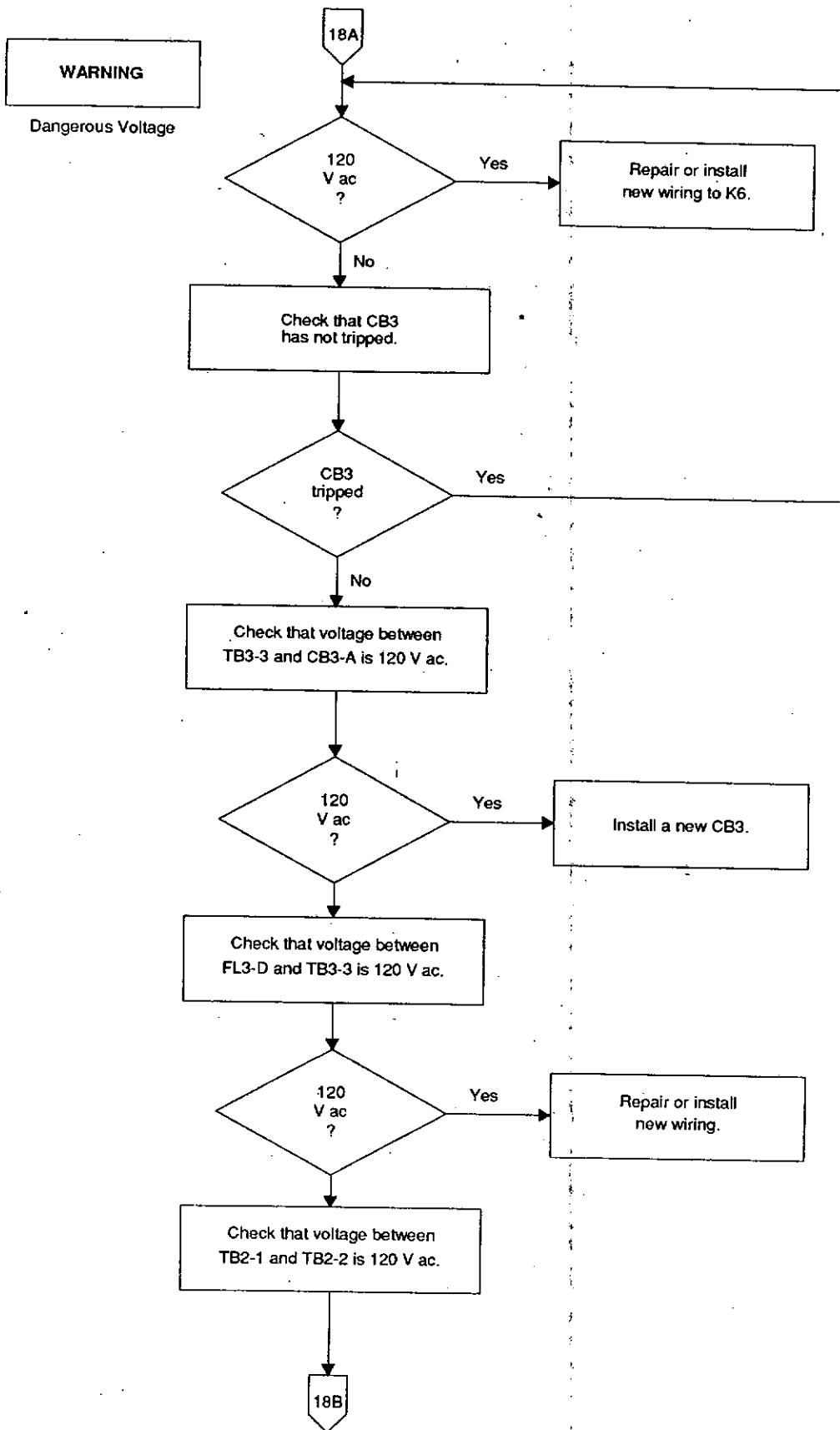
**WARNING**

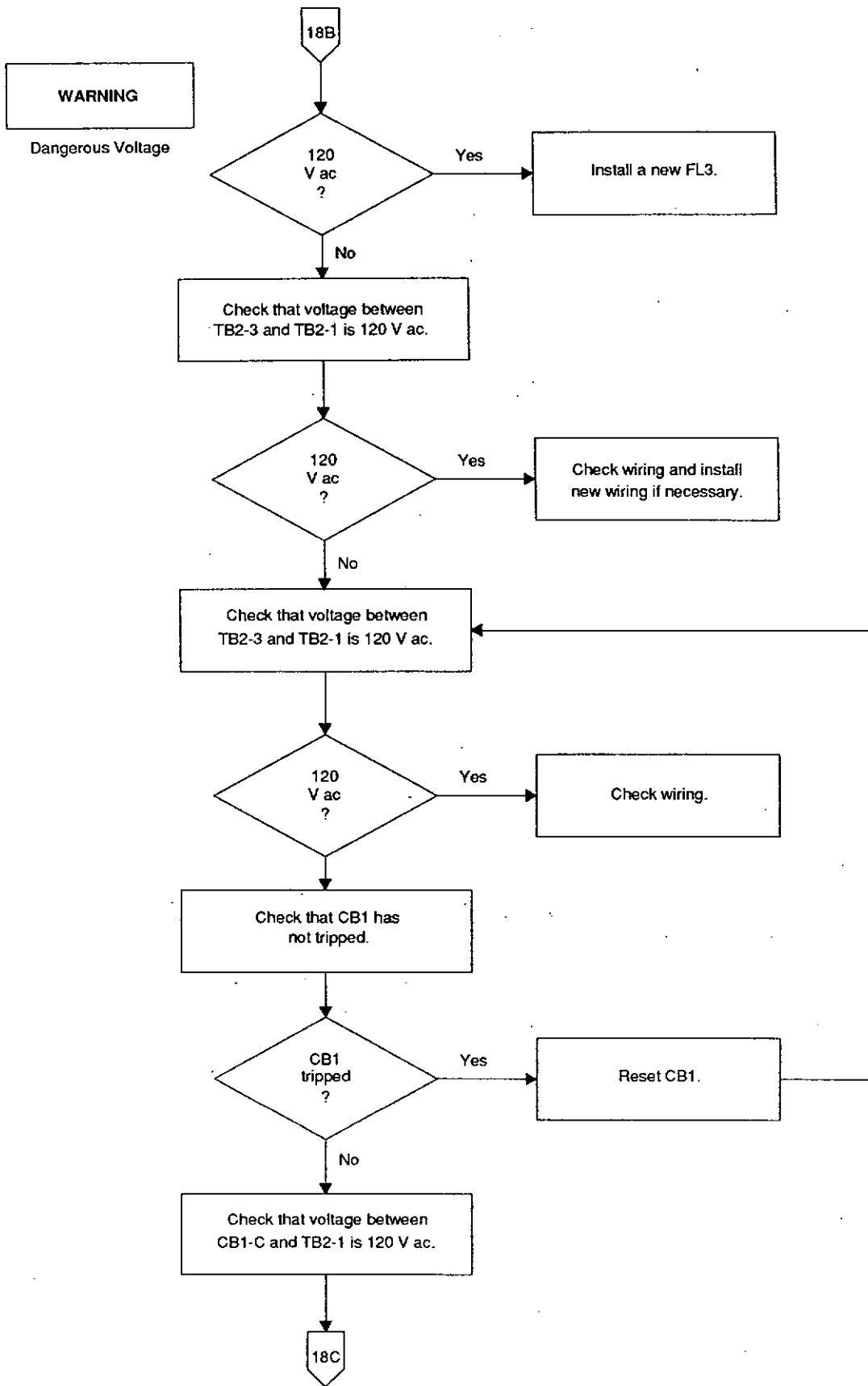
Dangerous Voltage

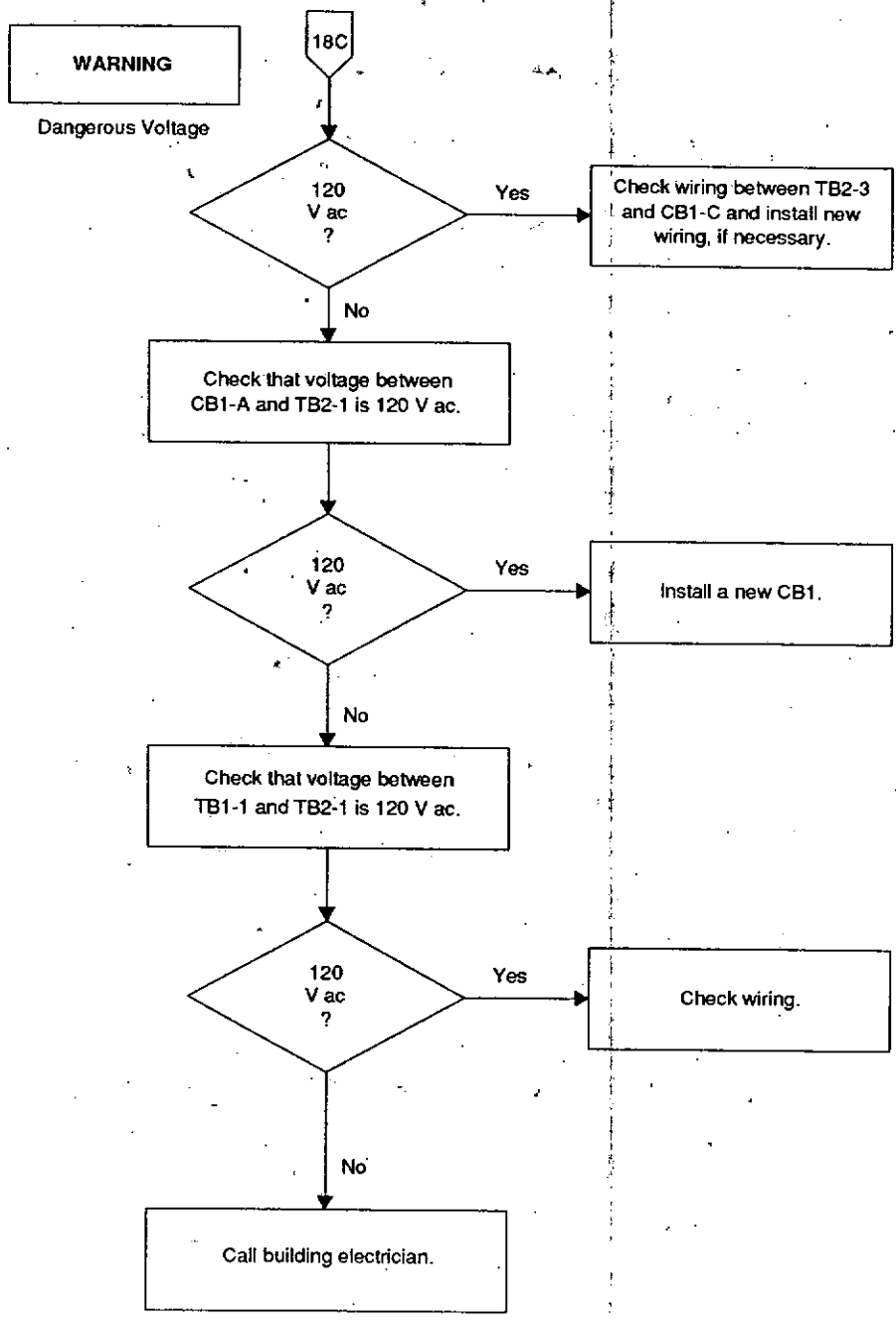
**CAUTION**

Possible damage from electrostatic discharge.







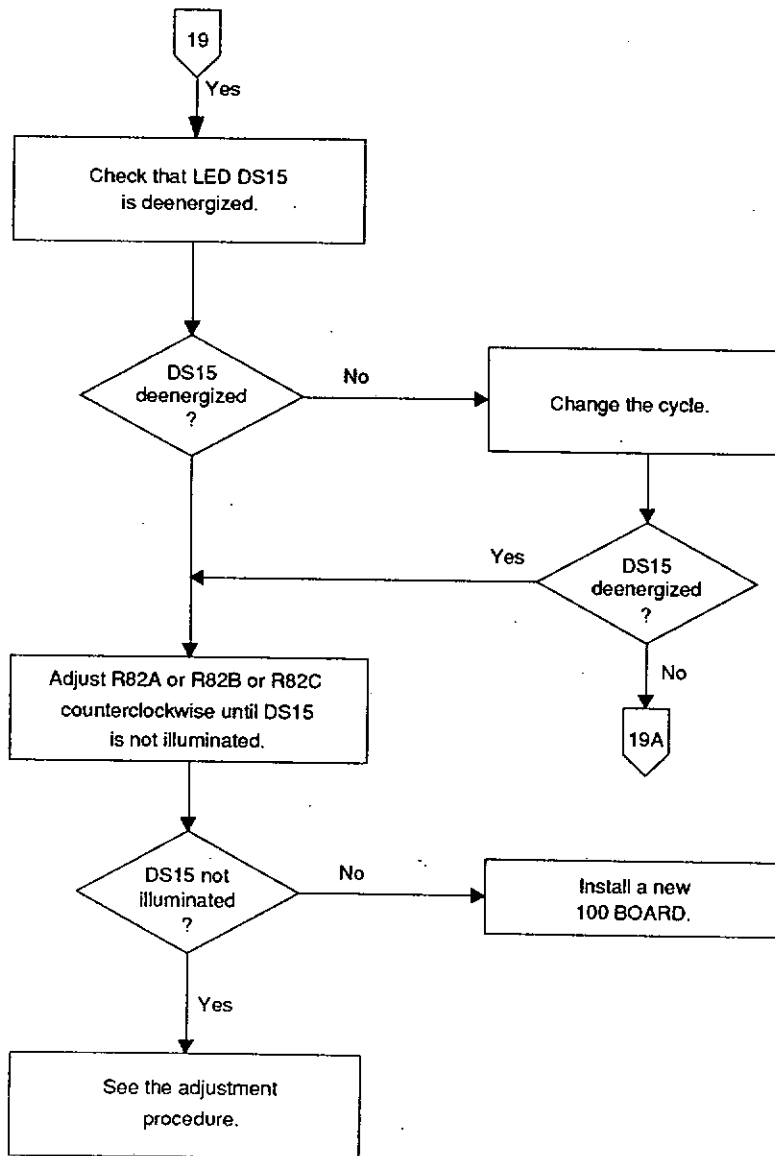


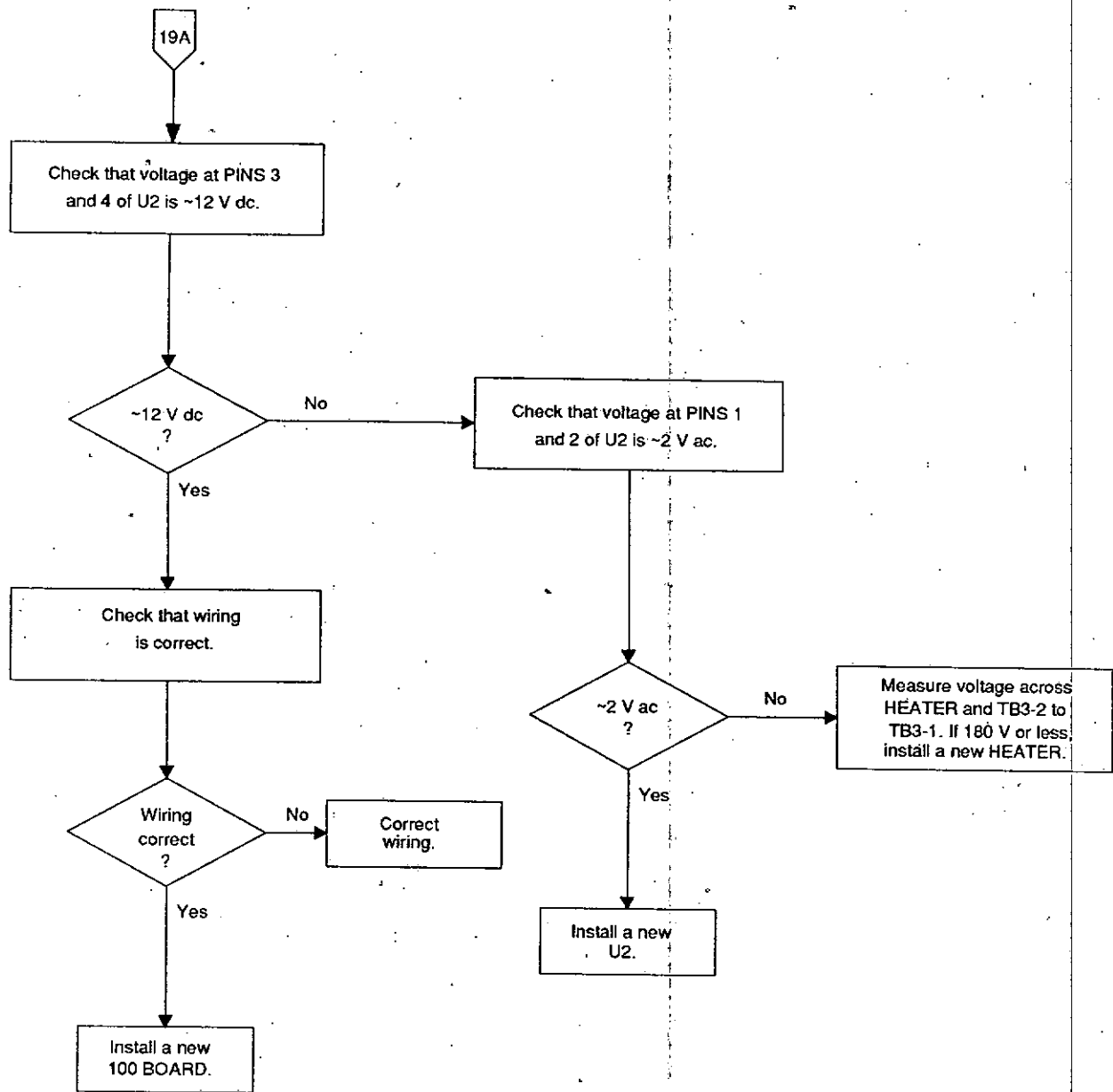
# No. 19 Developer is Overheating

Condition: Developer Cooling Solenoid L2 is operating. If Solenoid L2 is not operating, see procedure No. 2 on page 13.



Possible damage from electrostatic discharge.





Developer is Overheating

H136\_9051EC





## 100 Circuit Board - Functions of the LEDs

The following functions occur when the LEDs on the 100 CIRCUIT BOARD are illuminated.

LED	Function
DS1	Input Water Solenoid L1 is energized.
DS2	Cooling Water Solenoid L2 is energized.
DS3	Blinking indicates operation of the clear time clock.
DS4	Panel Meter is energized.
DS5	Detector Switches S3 or S4 is energized.
DS6	Blinks when the Film Counter and audio alarm operate.
DS7	Blinking indicates operation of the Standby Clock.
DS8	Switches S1, S3, S4, S6, or interface are actuated.
DS9	Safelight Receptacle is energized.
DS10	Replenishment Test Switch S2, on the 400 Circuit Board, is energized.
DS11	Standby Relay K1 is energized.
DS12	Developer Overtemperature Switch S2 is energized.
DS13	Developer Heater Relay K2 is energized.
DS14	Replenisher Relay K5 is energized.
DS15	Developer Heater Solid State Relay U2 is energized.
DS16	Blinking indicates Clear time Timer is operating.
DS17	12-V dc logic supply to the 100 Circuit Board is occurring.
DS18	5-V dc logic supply, on the 100 Circuit Board, is operating correctly.
DS19	Dryer Heater Solid State Relay U1 is energized.
DS20	Blinking indicates Standby Timer is operating.
DS21	12-V dc relay supply to the 100 Circuit Board is occurring.

3233dc\_b.txt

Health Sciences Division  
EASTMAN KODAK COMPANY  
Rochester, NY 14650

Kodak and Industrex are trademarks.

*The new vision of Kodak*

