



FUJI FILM PARTS LIST


FUJI  
NDT  
FILM PROCESSOR  
**FPM4200**

Ser. Nos. 8801369 and above

XM3-290E6

---

## USE OF PARTS LISTS AND EXPLODED VIEW ILLUSTRATIONS

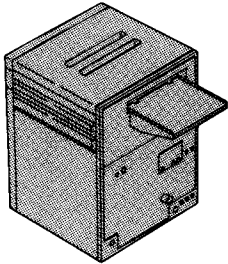
- The necessary replacement part should be sought from the exploded drawing of the pertinent section of the instrument. Remember that the exploded view parts that are shaded  can only be supplied as unitized blocks.
- The exploded drawing numbers correspond to the drawing reference numbers in the parts lists on the page opposite.
- From the parts list record the part number and the part name.
- When ordering parts, not only the part number and name, but also the instrument name and serial number should be provided.
- Improved part substitutions will in certain instances result in part number changes without prior notice.

**NOTE:** The numbers indicated in the parts list "Qty" column indicate the quantity of the designated part incorporated in a single instrument. However, for reference ease some parts may appear twice or more in the parts lists.

---

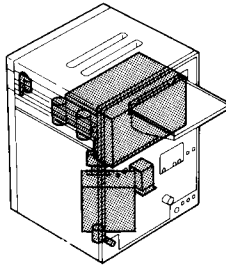
## INDEX 01

● Body, Frame



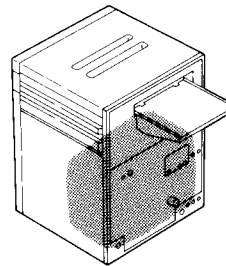
## INDEX 02

● Processing Section



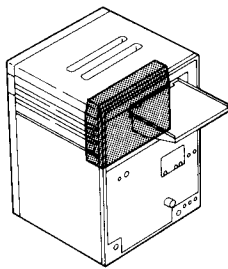
## INDEX 03

● Piping Section



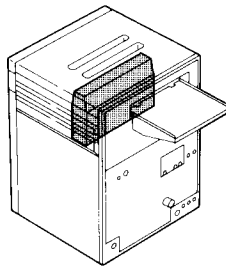
## INDEX 04

● Developer Rack



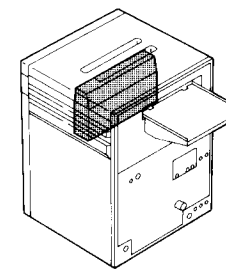
## INDEX 05

● Fixer Rack



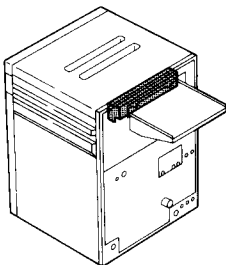
## INDEX 06

● Wash Rack



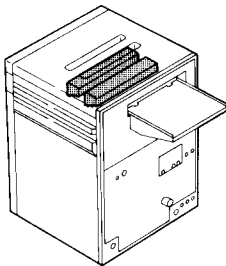
## INDEX 07

● Entrance Rack



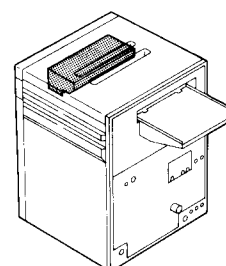
## INDEX 08

● D-F and F-W Crossover Racks



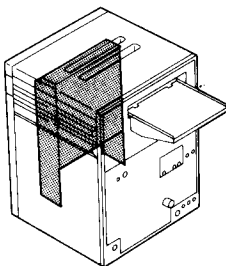
## INDEX 09

● Squeegee Rack



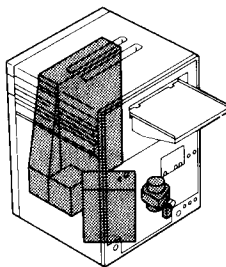
## INDEX 10

● Dryer Rack



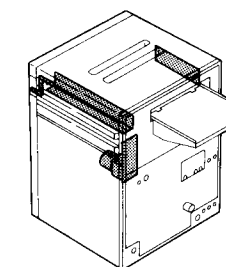
## INDEX 11

● Dryer Fan Section



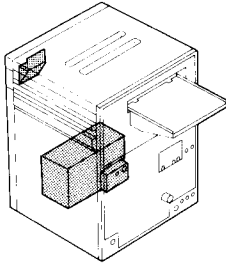
## INDEX 12

● Drive Section



## INDEX **13**

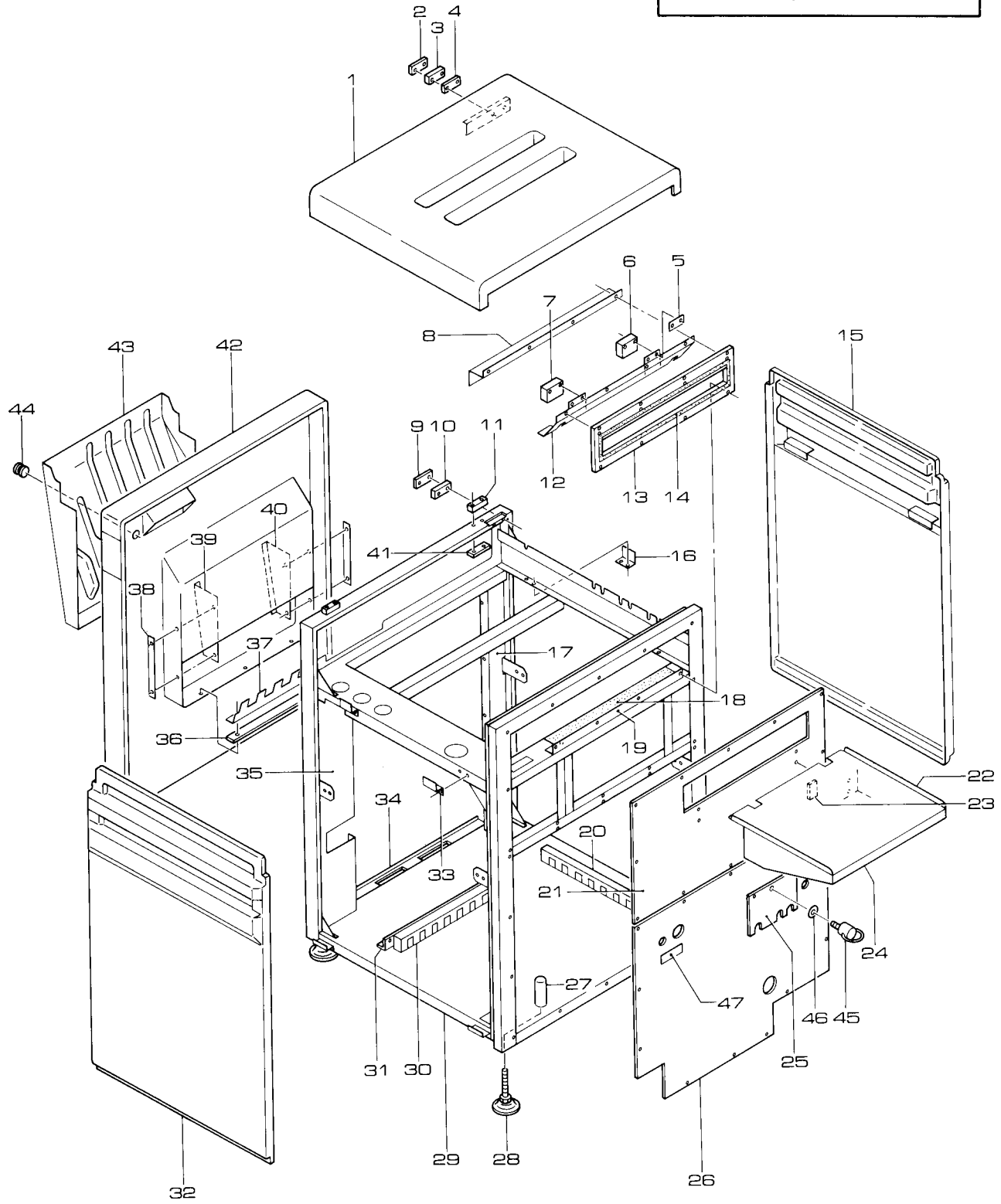
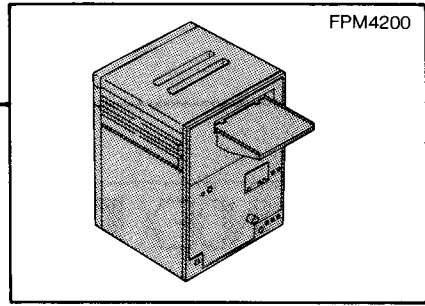
- Display/Detection/Electrical Section



## INDEX **14**

- FPM4200 Part No. Index List

- The parts shown in the shaded area of each index illustration are described in the page or pages having the same index number.

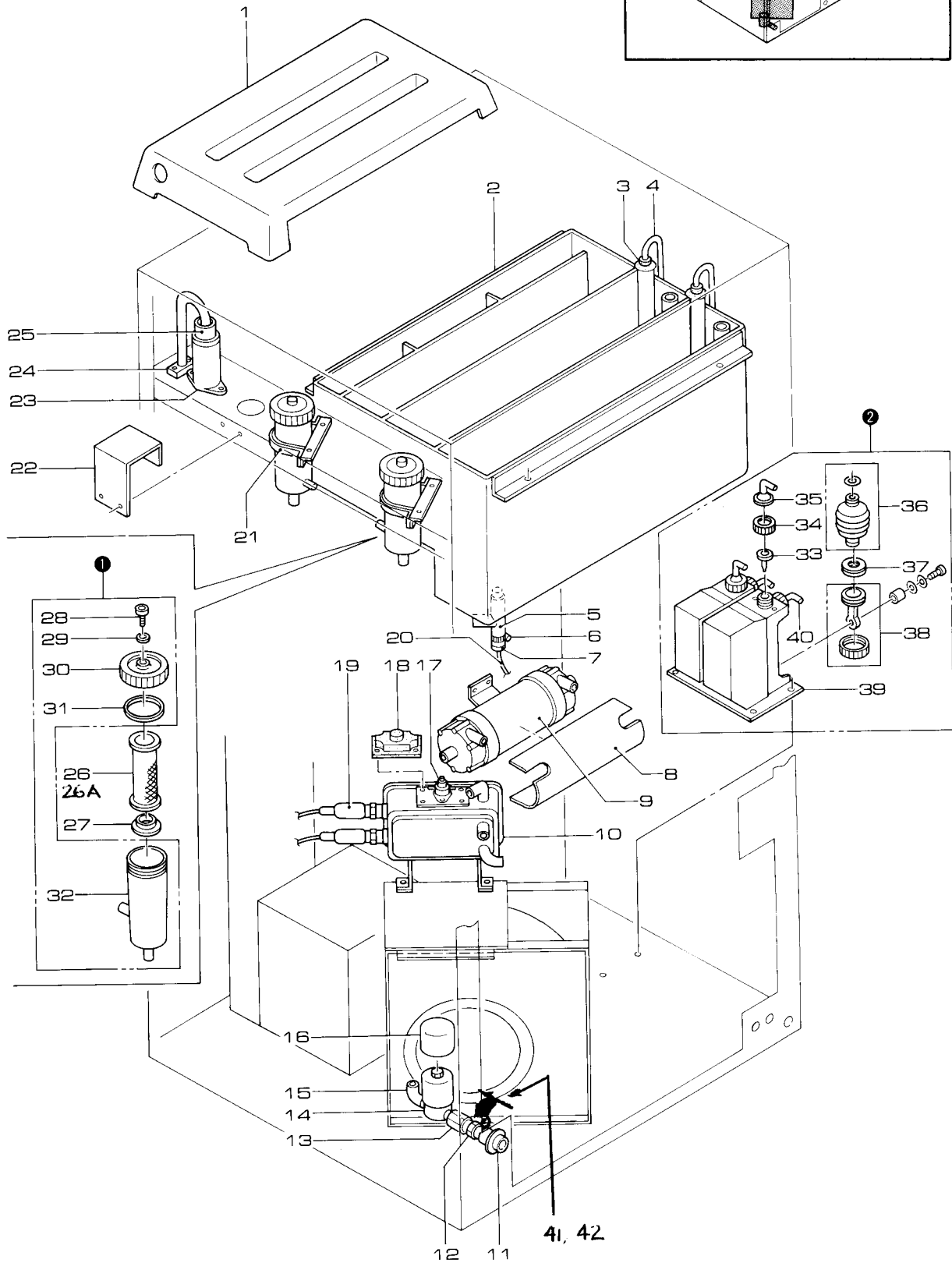


## Drawing

Ref.No.	Part No.	Part Name	Qty	Remarks
1	350F1694B	Cover	1	For Canada only
1	350F1994	Cover	1	
2	346F0613	Plate, auxiliary	2	
3	394F0012	Magnet	2	
4	347F0588	Spacer	2	
5	356F0464	Bracket	2	
6	812F0177B	Detector	1	
7	812F0178B	Detector	1	
8	350F1945	Cover	1	
9	305F0040	Plate, nut	1	
10	128S0012	Switch	1	
11	362F0123	Support	2	
12	363F1611B	Plate, guide	1	
13	345F0836	Frame	1	
14	382F0046	Tape, light shielding	1	
15	350F0882C	Cover	2	
15	350F1695	Cover	2	For Canada only
16	362F0121	Support	2	
17	345F0832C	Frame	1	
18	385F0199	Pad	1	
19	356F2861	Bracket	1	
20	359F0058A	Duct	1	380mm
21	348F0528	Plate, front, upper	1	
22	363F1612B	Guide	1	
23	350F8341136	Cap	1	

## Drawing

Ref.No.	Part No.	Part Name	Qty	Remarks
24	357F0329A	Table	1	
25	350F2298	Plate, patch	1	
26	348F0602	Plate, front, lower	1	
27	317F1060	Cap	4	
28	367F0071	Foot	4	
29	355F0355C	Frame	1	
30	359F0059	Duct	1	550mm
31	356F2862	Bracket	1	
32	350F0882C	Cover	2	
32	350F1695	Cover	2	For Canada only
33	362F0120A	Support	2	
34	362F0545A	Support	1	
35	345F0833C	Plate, shield	1	
36	346F0617	Plate, auxiliary	1	
37	363F1606	Guide	1	
38	346F0620	Plate, auxiliary	2	
39	356F2872	Bracket	1	
40	356F2873	Bracket	1	
41	305F0029	Plate, nut	2	
42	350F1981A	Cover	1	
42	350F1957A	Cover	1	For Canada only
43	362F0547	Support	1	
44	317F5031	Cap	1	
45	340F0127	Pull	1	
46	309F8341147	Washer, resin	1	
47	405F6513A	Label	1	



## Drawing

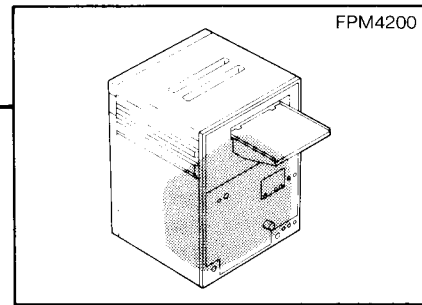
Ref.No.	Part No.	Part Name	Qty	Remarks
1	350F0248	Cover	1	
2	359F0184B	Tank	1	
3	350F1782A	Cover	2	
4	371F0274	Nozzle	2	
5	372F0387	Tee	1	
6	316F2047	Clamp, hose	14	19mm Diam.
7	317F5029	Stopper	1	
8	350F1941	Cover	1	
9	133F1070	Pump, motor	1	Iwaki 2MD-15RF II AC100V
10	379F0206	Exchanger, heat	1	
11	372F0086	Fitting, tube	1	
12	372F0090	Fitting, tube	1	
13	374F2078	Valve	1	3.2/min
14	134F1017	Valve, solenoid	1	
15	372F0230	Fitting, tube	1	
16	350F2338	Cover	1	
17	115S0030	Switch, thermostatic	1	#03-215035, OFF at 45°C(113°F)
18	350F0010	Cover	1	
19	117F9090	Heater	2	Cartridge, 230V, 0.72kW
20	115F4027	Thermistor	1	
21	316F7033	Band	2	

## Drawing

Ref.No.	Part No.	Part Name	Qty	Remarks
22	350F1993	Nozzle	1	
23	369N0005A	Pipe	1	
24	371F0150	Nozzle	1	
25	350F0323	Cover	1	
26	376F0018	Element	2	
27	375F0056	Packing	2	
28	308F8318148	Screw, special	2	
29	375S0001	O-ring	2	
30	317F1008C	Cap	2	
31	375F0041A	Packing	2	
32	360F0015B	Housing	2	
33	133F1452	Poppet valve	4	
34	133F1451	Cap	4	
35	133F1454	Nozzle, output	2	
36	133F1450	Bellows	2	
37	133F1455	End cap	2	
38	133F1323	Crank	2	
39	346F0614	Plate, auxiliary	1	
40	133F1453	Nozzle, input	2	
①	376F0026A	Filter case assembly		
②	133F1385	Replenishment pump assembly		
26A	376F0112	Filter *		
41	14200FR00001	Water Flow valve		
42	14200ZZ00004	Nipple		

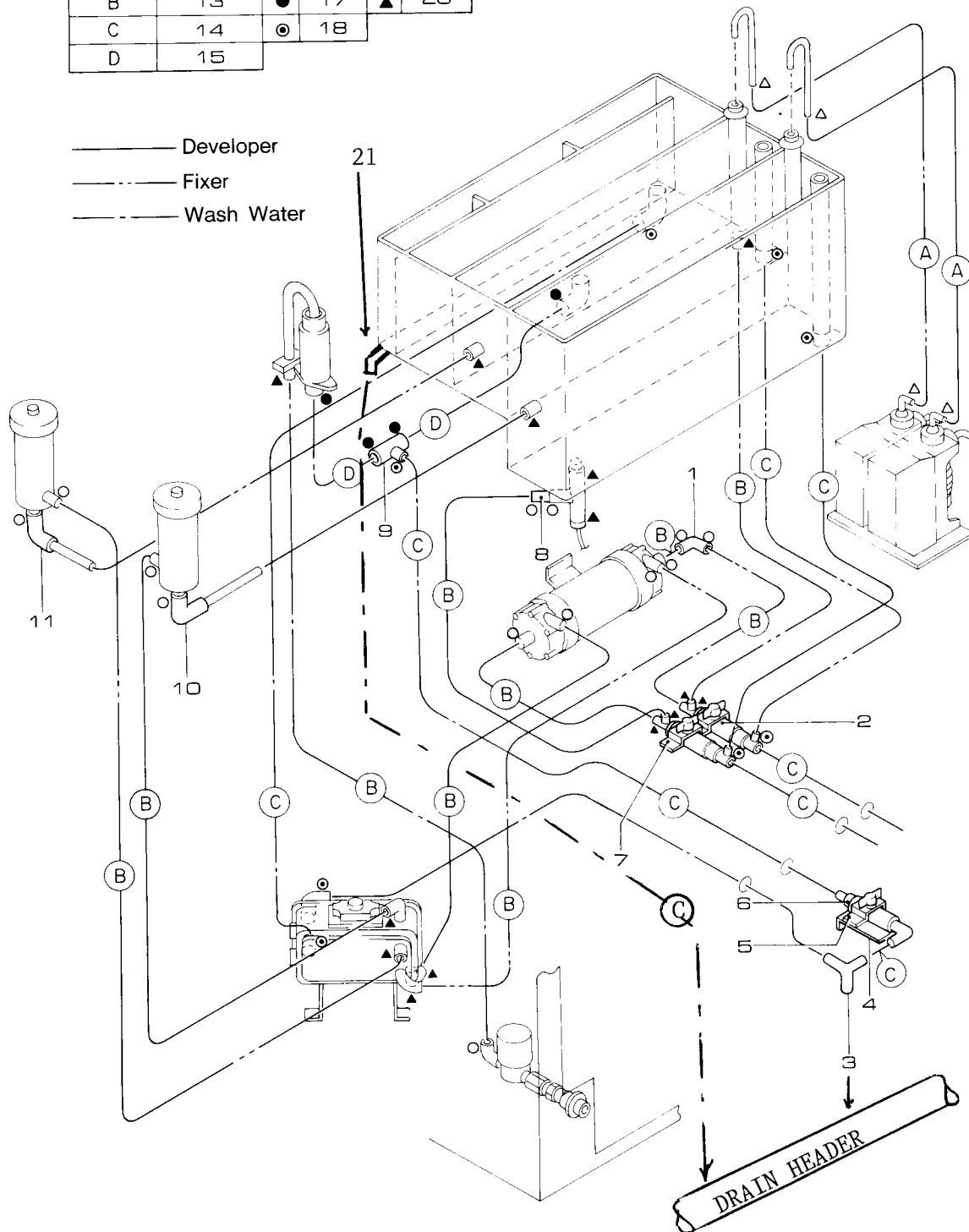
\* Part No. 376F0112 is an optional string type filter instead of the standard mesh type washable filter. The string filters are disposable and offer a finer filtration of the Developer solution.





Shape	Hose	Clamp	Clamp
Symbol			
A	12	○ 16	△ 19
B	13	● 17	▲ 20
C	14	⊙ 18	
D	15		

Developer  
 Fixer  
 Wash Water



## Drawing

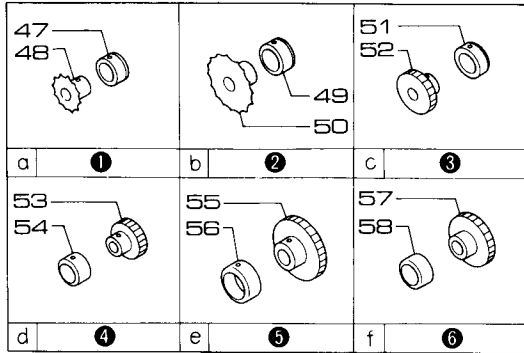
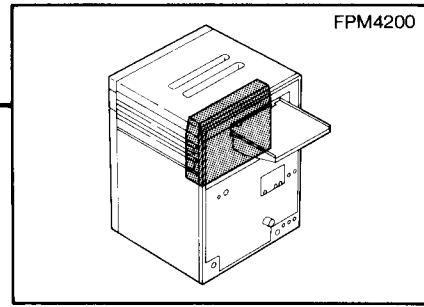
Ref.No.	Part No.	Part Name	Qty	Remarks
1	372S0004	Elbow	1	
2	374F2077	Valve	2	
3	372F0289	Tee	1	
4	356F2849A	Bracket	1	
5	316F7065	Band	3	25 Nominal
6	374F2076	Valve	1	
7	316F7065	Band	3	25 Nominal
8	371S0011	Fitting,tube	1	
9	372F0263	Fitting,tube	1	
10	372F0409A	Fitting,tube	1	

## Drawing

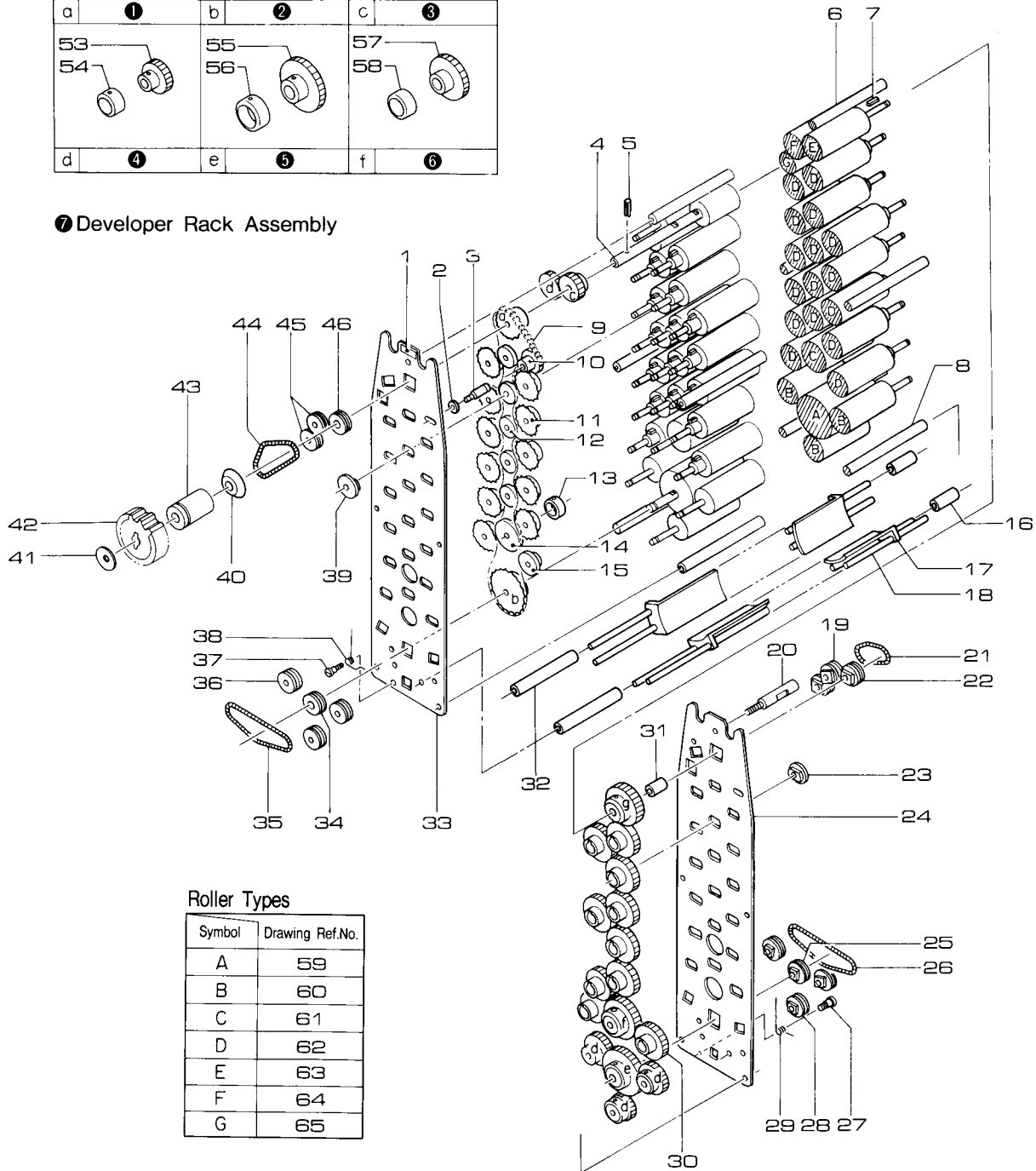
Ref.No.	Part No.	Part Name	Qty	Remarks
11	372F0447	Fitting,tube	1	
12	370S107B100	Hose		7mm ID×10mm OD
13	370S112E100	Hose		12mm ID ×18mm OD
14	370S119E100	Hose		19mm ID ×25mm OD
15	370F130E100	Hose		30mm ID ×36mm OD
16	316F2035	Clamp,hose	13	MC-6
17	316S2014	Clamp,hose	4	ND-20
18	316S2013	Clamp,hose	9	ND-12
19	316F2048A	Clamp,hose	4	11mm Diam.
20	316F2047	Clamp,hose	14	19mm Diam.
21	14200CT00001	Elbow	1	

## DEVELOPER RACK

FPM4200



### 7 Developer Rack Assembly



#### Roller Types

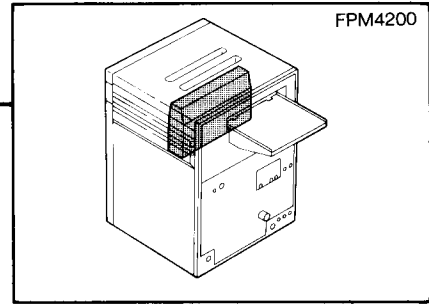
Symbol	Drawing Ref.No.
A	59
B	60
C	61
D	62
E	63
F	64
G	65

## Drawing

Ref. No.	Part No.	Part Name	Qty	Remarks
1	405F8319231	Label	2	
2	309F0039	Washer, plain	3	
3	319F1525	Shaft	3	
4	319F2203	Shaft	2	
5	310F1002018	Pin, straight	9	
6	319F8344121	Shaft	3	
7	312F8344136	Key	6	
8	319F2196B	Shaft	12	
9	325F8344133	Chain, ladder	1	
10	337F8344342	Wheel	3	
11	326F8344191	Wheel, ladder chain	21	
12	337F8344193	Wheel	12	
13	338S0010	Ring	54	
14	337F8344192	Wheel	3	
15	337F8344193	Wheel	12	
16	347F0592A	Spacer	6	
17	363F1608A	Plate, guide	14	
18	313F0385B	Stay	12	
19	322FC049	Support, shaft	64	
20	319F8344123	Shaft	3	
21	388F2032	Spring, extension	2	
22	322FC050	Support, shaft	16	
23	322FC048	Support, shaft	72	
24	349F0465A	Sideplate, rack	2	
25	322FC050	Support, shaft	16	
26	388F2033	Spring, extension	6	
27	319F8344371	Shaft	6	
28	322FC049	Support, shaft	64	
29	388F8344372	Spring, torsion	3	
30	327F8344311	Gear, spur	21	
31	338F0278A	Collar	2	
32	347F0591A	Spacer	6	
33	349F0465A	Sideplate, rack	2	
34	322FC050	Support, shaft	16	
35	388F2033	Spring, extension	6	
36	322FC049	Support, shaft	64	
37	319F8344371	Shaft	6	
38	388F8344373	Spring, torsion	3	

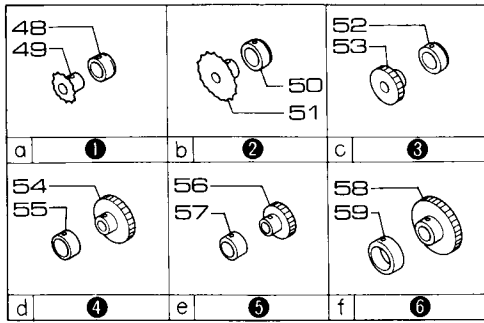
## Drawing

Ref. No.	Part No.	Part Name	Qty	Remarks
39	322FC048	Support, shaft	72	
40	335F6791522	Flange	3	
41	309F8312112	Washer, plain	8	
42	327F8342134A	Gear, helical	4	
43	338F8344134A	Collar	3	
44	388F2032	Spring, extension	2	
45	322FC049	Support, shaft	64	
46	322FC050	Support, shaft	16	
47	338S0010	Ring	54	
48	326F8344181A	Wheel, ladder chain	3	
49	338S0011	Ring	6	
50	326F8344171	Wheel, ladder chain	3	
51	338S0010	Ring	54	
52	327F8344391	Gear, spur	9	
53	327F8344151	Gear, spur	36	
54	338S0010	Ring	54	
55	327F8344141	Gear, spur	3	
56	338S0011	Ring	6	
57	327F8344161	Gear, spur	3	
58	338S0010	Ring	54	
59	334F2426A	Roller, resin	3	
60	334F8344220	Roller, rubber	3	
61	334F8344230	Roller, resin	3	
62	334F2154	Roller, resin	33	
63	334F8344250	Roller, rubber	3	
64	334F8344260	Roller, resin	3	
65	334F8344270	Roller, rubber	1	
①	326F8344180	Ladder chain wheel assembly		
②	326F8344170	Ladder chain wheel assembly		
③	327F8344390	Spur gear assembly		
④	327F8344150	Spur gear assembly		
⑤	327F8344140	Spur gear assembly		
⑥	327F8344160	Spur gear assembly		
⑦	802F0452A	Developer rack assembly		

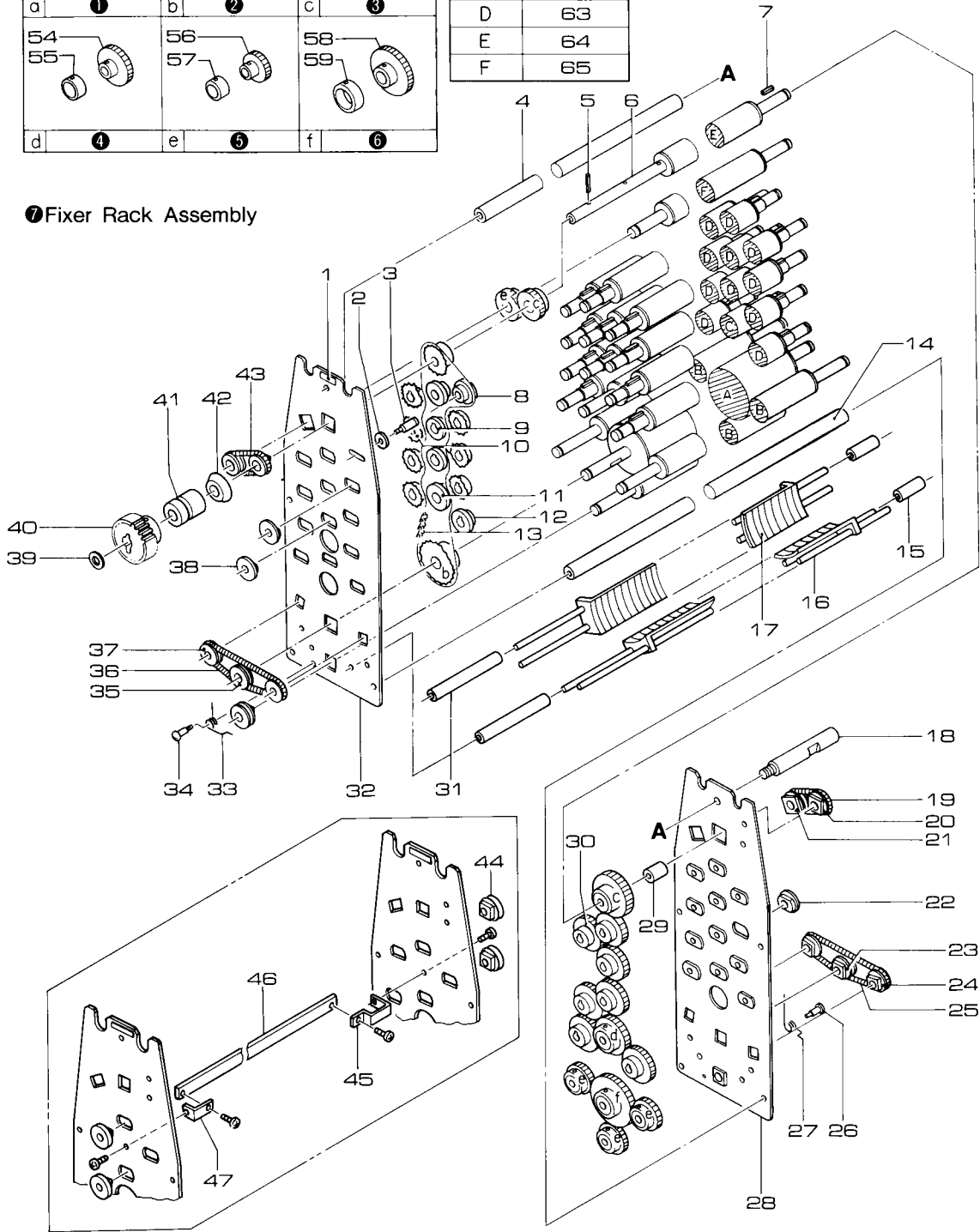


### Roller Types

Symbol	Drawing Ref.No.
A	60
B	61
C	62
D	63
E	64
F	65



### 7 Fixer Rack Assembly

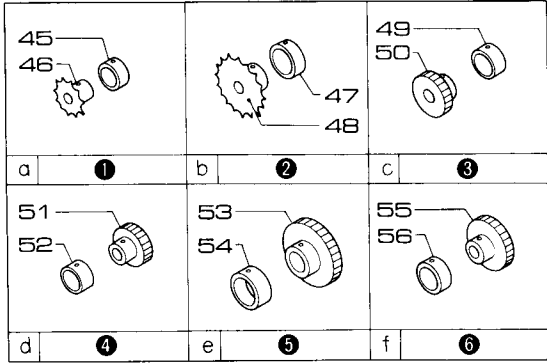
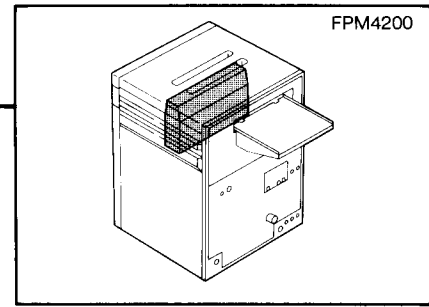


## Drawing

Ref.No.	Part No.	Part Name	Qty	Remarks
1	405F8319232	Label	1	
2	309F0039	Washer, plain	3	
3	319F1525	Shaft	3	
4	319F8344121	Shaft	3	
5	310F1002018	Pin, straight	9	
6	319F2203	Shaft	2	
7	312F8344136	Key	6	
8	337F8344342	Wheel	3	
9	337F8344193	Wheel	4	
10	326F8344191	Wheel, ladder chain	21	
11	337F8344192	Wheel	3	
12	337F8344193	Wheel	12	
13	325F8345133	Chain, ladder	1	
14	319F2196B	Shaft	12	
15	347F0592A	Spacer	6	
16	313F0385B	Stay	12	
17	363F1610	Guide	28	
18	319F8344123	Shaft	3	
19	388F2031	Spring, extension	22	
20	322FC050	Support, shaft	16	
21	322FC049	Support, shaft	64	
22	322FC048	Support, shaft	72	
23	322FC050	Support, shaft	16	
24	322FC049	Support, shaft	64	
25	388F2033	Spring, extension	6	
26	319F8344371	Shaft	6	
27	388F8344372	Spring, torsion	3	
28	349F0480	Sideplate, rack	2	
29	338F0278A	Collar	2	
30	327F8344311	Gear, spur	21	
31	347F0591A	Spacer	6	
32	349F0480	Sideplate, rack	2	
33	388F8344373	Spring, torsion	3	
34	319F8344371	Shaft	6	
35	322FC050	Support, shaft	16	
36	388F2033	Spring, extension	6	
37	322FC049	Support, shaft	64	
38	322FC048	Support, shaft	72	

## Drawing

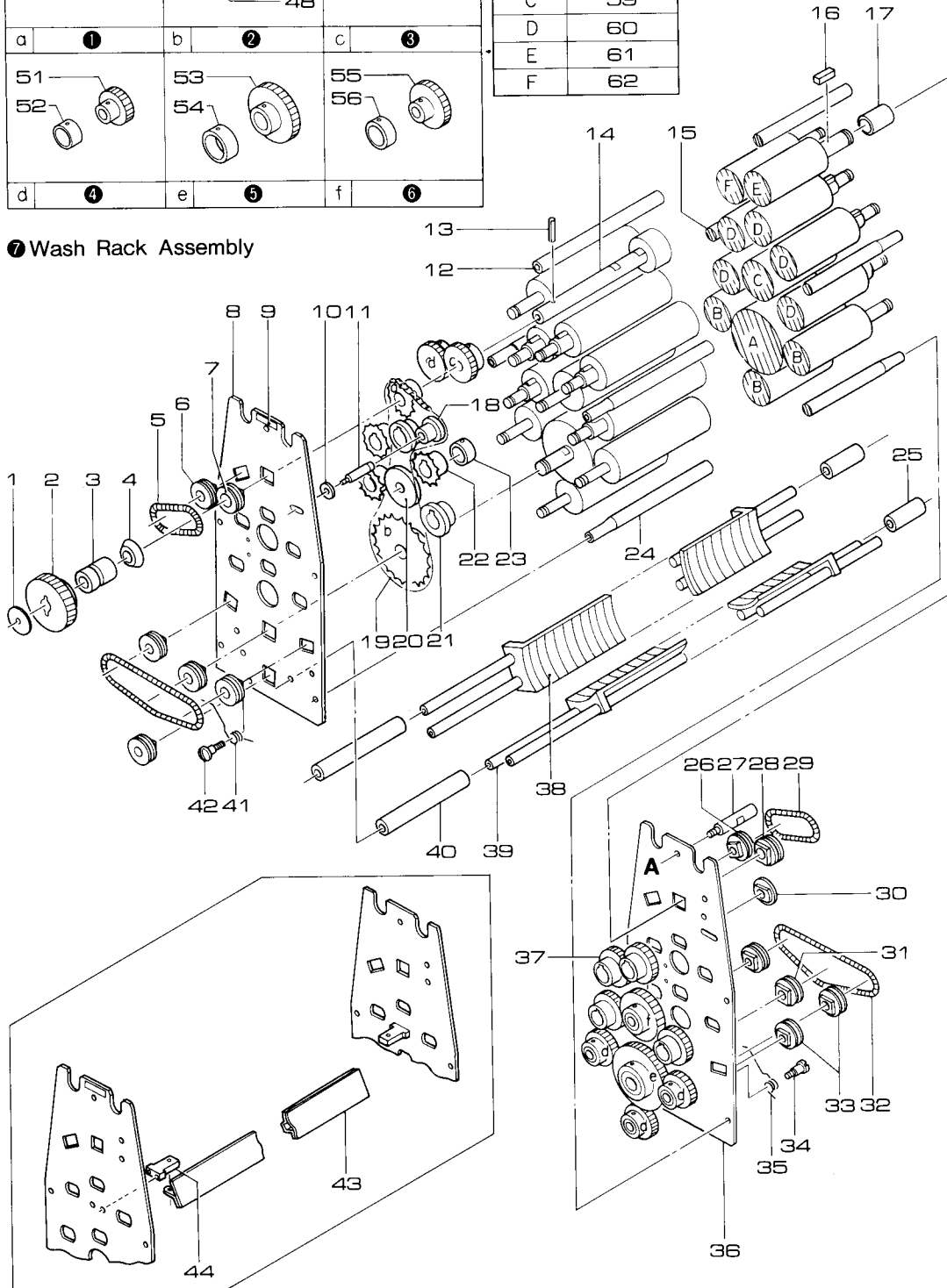
Ref.No.	Part No.	Part Name	Qty	Remarks
39	309F8312112	Washer, plain	8	
40	327F8342134	Gear, helical	5	
41	338F8344134A	Collar	3	
42	335F6791522	Flange	3	
43	388F2031	Spring, extension	22	
44	322FC161	Support, shaft	4	
45	362F0523	Support	1	
46	363F1442	Guide	1	
47	362F0525	Support	1	
48	338S0010	Ring	54	
49	326F8344181A	Wheel, ladder chain	3	
50	338S0011	Ring	6	
51	326F8344171	Wheel, ladder chain	3	
52	338S0010	Ring	54	
53	327F8344391	Gear, spur	9	
54	327F8344161	Gear, spur	3	
55	338S0010	Ring	54	
56	327F8344151	Gear, spur	36	
57	338S0010	Ring	54	
58	327F8344141	Gear, spur	3	
59	338S0011	Ring	6	
60	334F2426A	Roller, resin	3	
61	334F8345210	Roller, resin	6	
62	334F8344230	Roller, resin	3	
63	334F2154	Roller, resin	33	
64	334F8344250	Roller, rubber	3	
65	334F8344260	Roller, resin	3	
①	326F8344180	Ladder chain wheel assembly		
②	326F8344170	Ladder chain wheel assembly		
③	327F8344390	Spur gear assembly		
④	327F8344150	Spur gear assembly		
⑤	327F8344140	Spur gear assembly		
⑥	327F8344160	Spur gear assembly		
⑦	802F0453A	Fixer rack assembly		



### Roller Types

Symbol	Drawing Ref.No.
A	57
B	58
C	59
D	60
E	61
F	62

### 7 Wash Rack Assembly



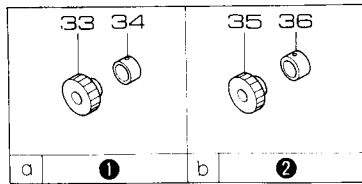
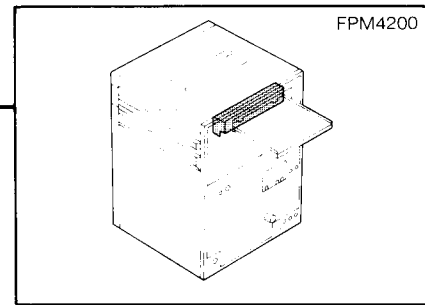
## Drawing

Ref. No.	Part No.	Part Name	Qty	Remarks
1	309F8312112	Washer	8	
2	327F8342134	Gear, helical	5	
3	338F0565	Collar	3	
4	335F6791522	Flange	3	
5	388F2031	Spring, extension	22	
6	322FC049	Support, shaft	64	
7	322FC050	Support, shaft	16	
8	349F0469	Sideplate, rack	2	
9	405F8319233	Label	1	
10	309F0039	Washer, plain	3	
11	319F1525	Shaft	3	
12	319F8344121	Shaft	3	
13	310F1002018	Pin, straight	9	
14	319F3287	Shaft	1	
15	319F2196B	Shaft	12	
16	312F8344136	Key	6	
17	338F8344135	Collar	1	
18	337F8344342	Wheel	3	
19	325F8346133	Chain, ladder	1	
20	337F8344192	Wheel	3	
21	337F8344193	Wheel	12	
22	326F8344191	Wheel, ladder chain	21	
23	338S0010	Ring	54	
24	319F2196B	Shaft	12	
25	347F0592A	Spacer	6	
26	322FC049	Support, shaft	64	
27	319F8344123	Shaft	3	
28	322FC050	Support, shaft	16	
29	388F2031	Spring, extension	22	
30	322FC048	Support, shaft	72	
31	322FC050	Support, shaft	16	
32	388F2033	Spring, extension	6	
33	322FC049	Support, shaft	64	
34	319F8344371	Shaft	6	
35	388F8344372	Spring, torsion	3	
36	349F0469	Sideplate, rack	2	

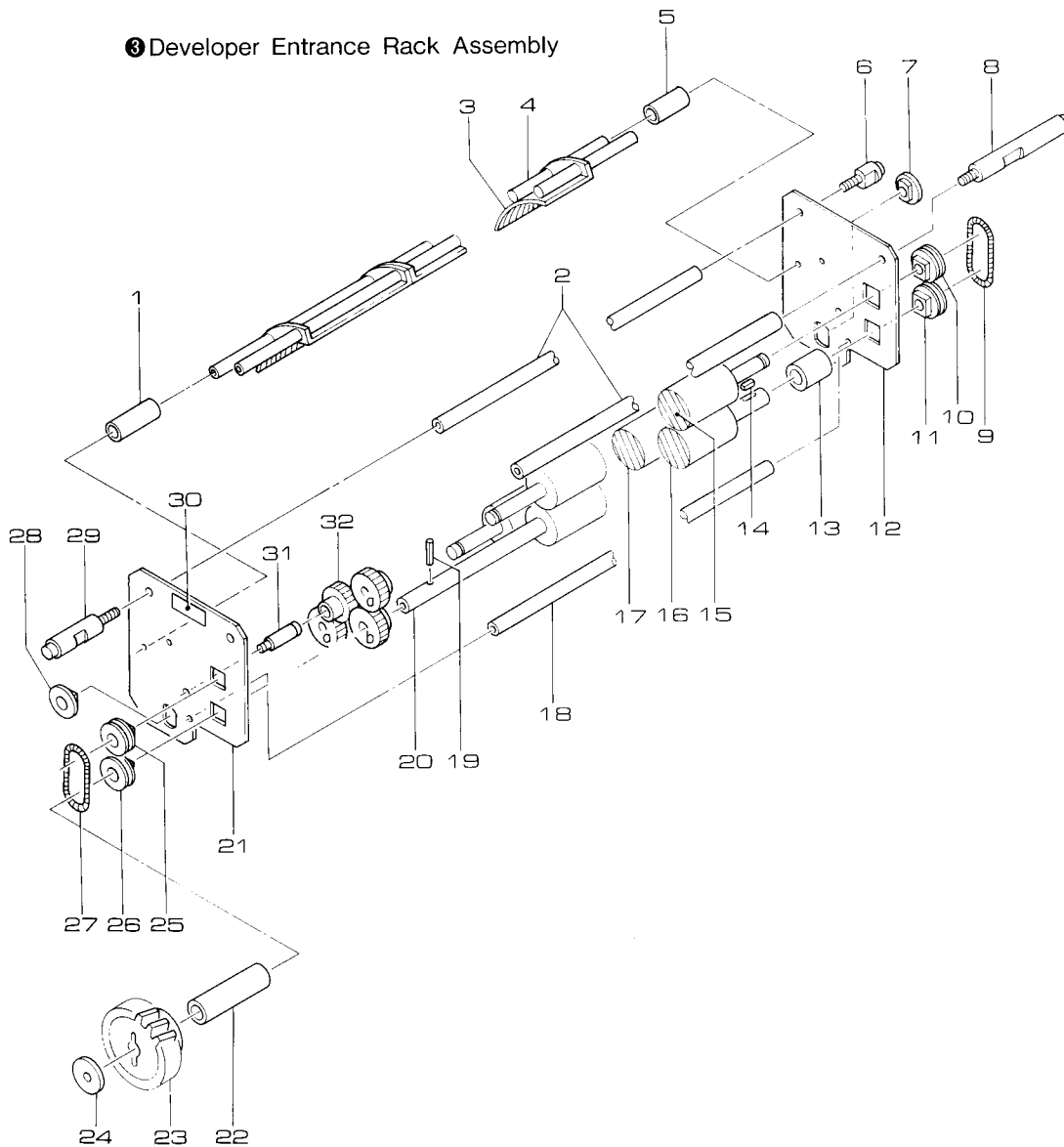
## Drawing

Ref. No.	Part No.	Part Name	Qty	Remarks
37	327F8344311	Gear, spur	21	
38	363F1610	Plate, guide	28	
39	313F0385B	Stay	12	
40	347F0591A	Spacer	6	
41	388F8344373	Spring, torsion	3	
42	319F8344371	Shaft	6	
43	363F0203	Plate, guide	1	
44	356F0454	Bracket	2	
45	338S0010	Ring	54	
46	326F8344181A	Wheel, ladder chain	3	
47	338S0011	Ring	6	
48	326F8344171	Wheel, ladder chain	3	
49	338S0010	Ring	54	
50	327F8344391	Gear, spur	9	
51	327F8344151	Gear, spur	36	
52	338S0010	Ring	54	
53	327F8344141	Gear, spur	3	
54	338S0011	Ring	6	
55	327F8344161	Gear, spur	3	
56	338S0010	Ring	54	
57	334F2426A	Roller, resin	3	
58	334F8345210	Roller, resin	6	
59	334F8344230	Roller, resin	3	
60	334F2154	Roller, resin	33	
61	334F8344250	Roller, rubber	3	
62	334F8344260	Roller, resin	3	
①	326F8344180	Ladder chain wheel assembly		
②	326F8344170	Ladder chain wheel assembly		
③	327F8344390	Spur gear assembly		
④	327F8344150	Spur gear assembly		
⑤	327F8344140	Spur gear assembly		
⑥	327F8344160	Spur gear assembly		
⑦	802F0343G	Wash water rack assembly		





### 3 Developer Entrance Rack Assembly



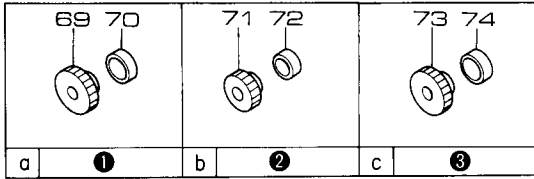
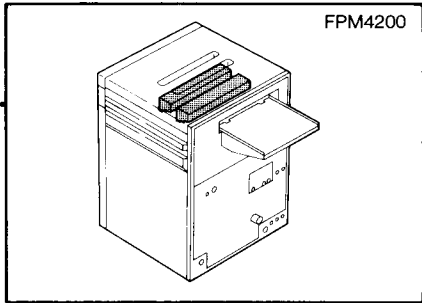
## Drawing

Ref.No.	Part No.	Part Name	Qty	Remarks
1	347F0593A	Spacer	3	
2	319F8343121	Shaft	10	
3	363F1609	Guide	7	
4	319F8343122	Shaft	17	
5	347F0590A	Spacer	3	
6	319F8343124	Shaft	2	
7	322FC048	Support, shaft	72	
8	319F8343125	Shaft	2	
9	388F2031	Spring, extension	22	
10	322FC049	Support, shaft	64	
11	322FC050	Support, shaft	16	
12	349F0468	Sideplate, rack	2	
13	338F8343134	Collar	3	
14	312F8344136	Key	6	
15	334F8343220	Roller	10	
16	334F8343210	Roller	1	
17	334F2155	Roller, resin	2	
18	319F8343122	Shaft	17	
19	310F1002018	Pin, straight	9	
20	319F2197	Shaft	1	

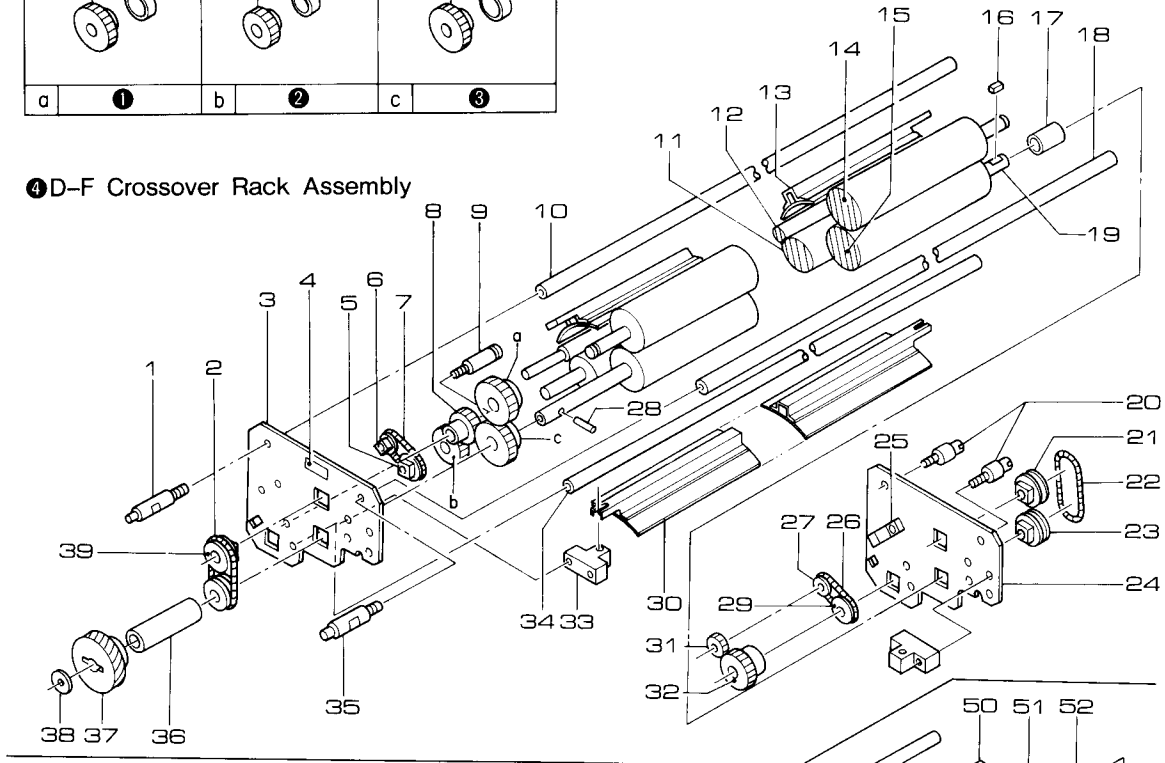
## Drawing

Ref.No.	Part No.	Part Name	Qty	Remarks
21	349F0468	Sideplate, rack	2	
22	338F8343133	Collar	3	
23	327F8342135A	Gear, helical	3	
24	309F8312112	Washer	8	
25	322FC049	Support, shaft	64	
26	322FC050	Support, shaft	16	
27	388F2031	Spring, extension	22	
28	322FC048	Support, shaft	72	
29	319F8343123	Shaft	6	
30	405F8319231	Label	1	
31	319F8343351	Shaft	5	
32	327F1121601	Gear, spur	4	
33	327F8344151	Gear, spur	36	
34	338S0010	Ring	54	
35	327F8344391	Gear, spur	9	
36	338S0010	Ring	54	
①	327F8344150	Spur gear assembly		
②	327F8344390	Spur gear assembly		
③	802F0344A	Developer entrance rack assembly		

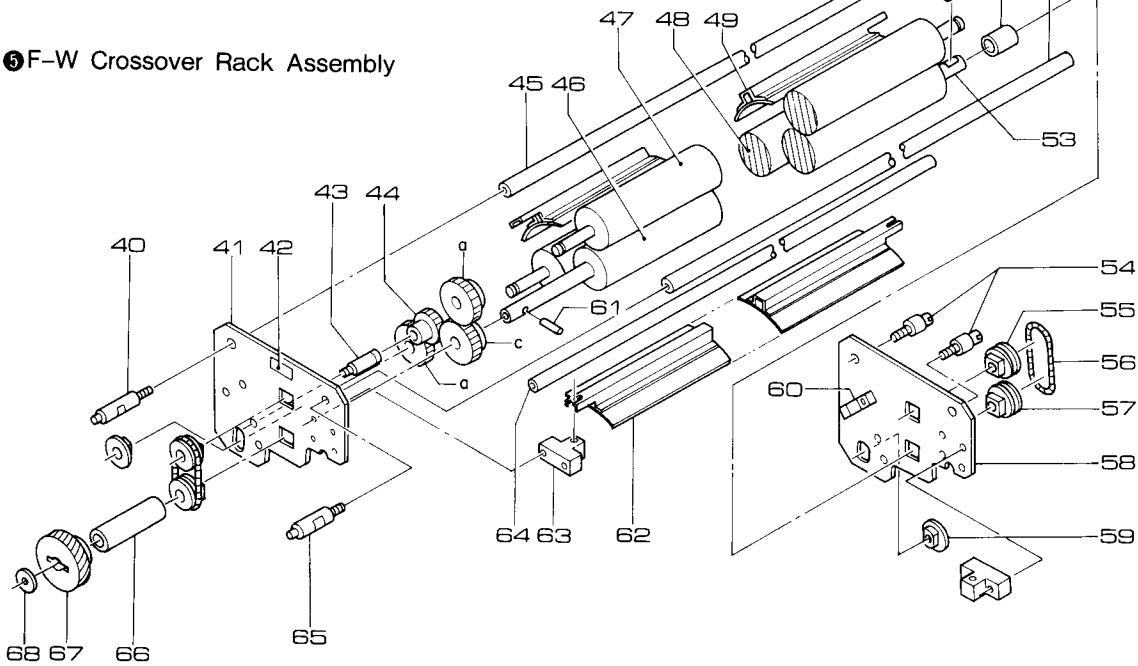
## D-F AND F-W CROSSOVER RACKS



### ④ D-F Crossover Rack Assembly



### ⑤ F-W Crossover Rack Assembly



## Drawing

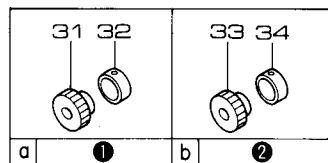
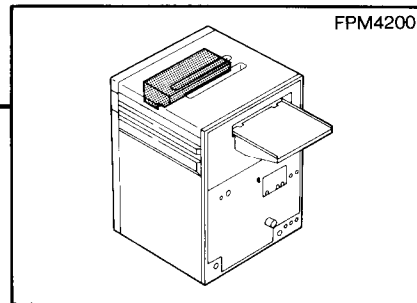
Ref.No.	Part No.	Part Name	Qty	Remarks
1	319F8343123	Shaft	5	
2	388F2031	Spring, extension	22	
3	349F0275A	Sideplate, rack	2	
4	405F8319234	Label	1	
5	322FC052	Support, shaft	2	
6	322FC051	Support, shaft	2	
7	388F2018	Spring, extension	2	
8	327F1121601	Gear, spur	4	
9	319F8343351	Shaft	6	
10	319F8343121	Shaft	10	
11	334F3057	Roller, rubber	1	
12	334F1017A	Roller, metal	1	
13	363F0202	Plate, guide	1	
14	334F8343220	Roller	10	
15	334F8344250	Roller, rubber	3	
16	312F8344136	Key	6	
17	338F8343134	Collar, ring	3	
18	319F8343121	Shaft	10	
19	319F1232	Shaft	3	
20	319F8343124	Shaft	4	
21	322FC049	Support, shaft	60	
22	388F2031	Spring, extension	22	
23	322FC050	Support, shaft	20	
24	349F0275A	Sideplate, rack	2	
25	362F8344336	Support	4	
26	388F2018	Spring, extension	2	
27	322FC051	Support, shaft	2	
28	310F1002018	Pin	9	
29	322FC052	Support, shaft	2	
30	363F0199	Plate, guide	2	
31	327F1101001	Gear, spur	1	
32	327F1102005	Gear, spur	1	
33	362F8344336	Support	8	
34	319F8343122	Shaft	17	
35	319F8343123	Shaft	5	
36	338F8343133	Collar, ring	3	
37	327F8342135A	Gear, helical	3	
38	309F8312112	Washer	8	
39	322FC049	Support, shaft	60	
40	319F8343123	Shaft	5	

## Drawing

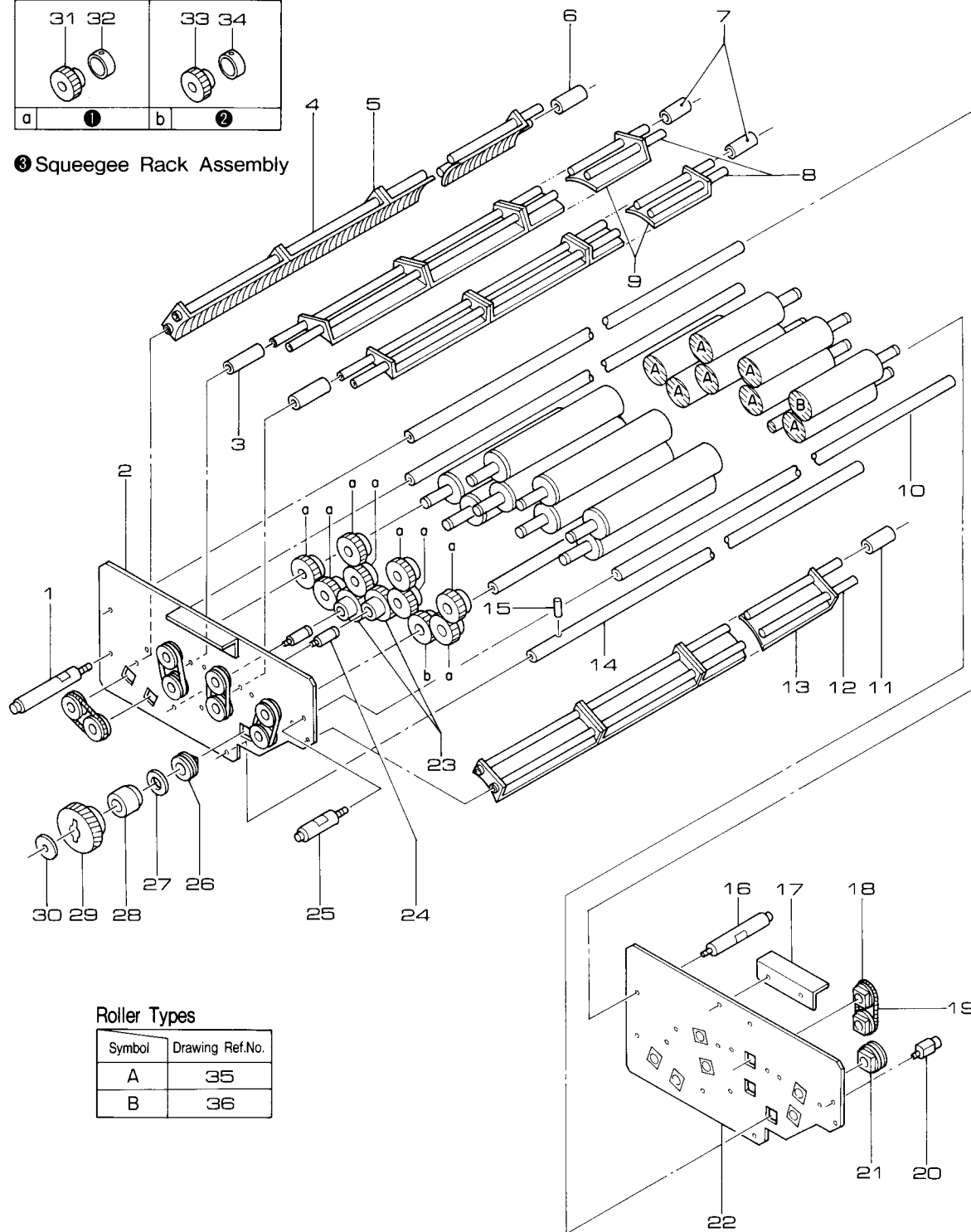
Ref.No.	Part No.	Part Name	Qty	Remarks
41	349F8343312	Sideplate, rack	2	
42	405F8319235	Label	1	
43	319F8343351	Shaft	6	
44	327F1121601	Gear, spur	4	
45	319F8343121	Shaft	10	
46	334F8344250	Roller, rubber	3	
47	334F8343220	Roller	10	
48	334F2155	Roller, resin	2	
49	363F0198	Plate, guide	1	
50	312F8344136	Key	6	
51	338F8343134	Collar, ring	3	
52	319F8343121	Shaft	10	
53	319F1232	Shaft	3	
54	319F8343124	Shaft	4	
55	322FC049	Support, shaft	60	
56	388F2031	Spring, extension	22	
57	322FC050	Support, shaft	20	
58	349F8343312	Sideplate, rack	2	
59	322FC048	Support, shaft	72	
60	362F8344336	Support	8	
61	310F1002018	Pin	9	
62	363F0199	Guide	2	
63	362F8344336	Support	8	
64	319F8343122	Shaft	17	
65	319F8343123	Shaft	5	
66	338F8343133	Collar, ring	3	
67	327F8342135A	Gear, helical	3	
68	309F8312112	Washer	8	
69	327F8344151	Gear, spur	32	
70	338S0010	Ring	54	
71	327F1121601	Gear, spur	4	
72	338S0010	Ring	54	
73	327F8344391	Gear, spur	9	
74	338F8614182	Ring	54	
①	327F8344150	Spur gear assembly		
②	327F0033	Spur gear assembly		
③	327F8344390	Spur gear assembly		
④	802F0191D	D-F Crossover rack assembly		
⑤	802F0068B	F-W Crossover rack assembly		

## SQUEEGEE RACK

FPM4200



③ Squeegie Rack Assembly



### Roller Types

Symbol	Drawing Ref.No.
A	35
B	36

## Drawing

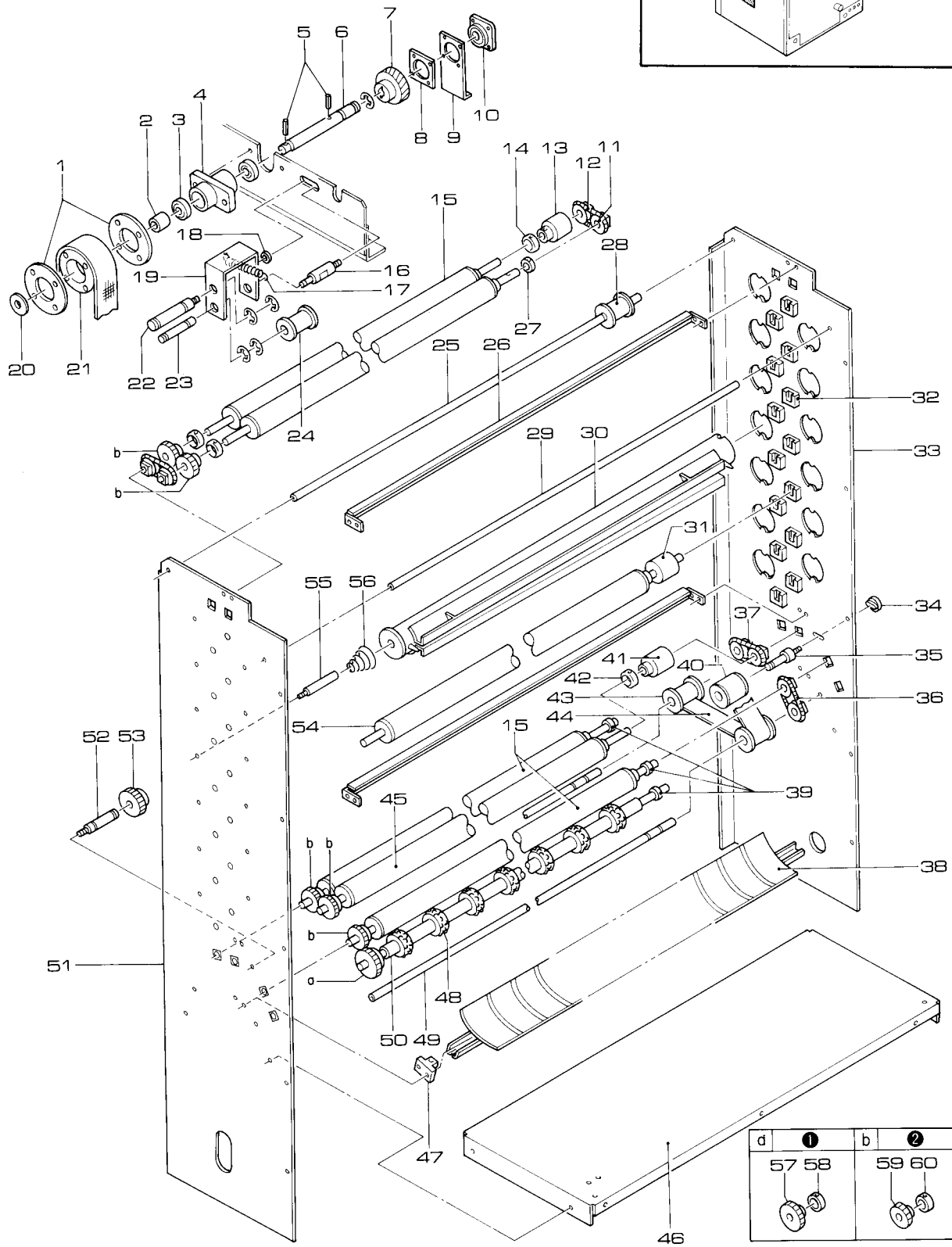
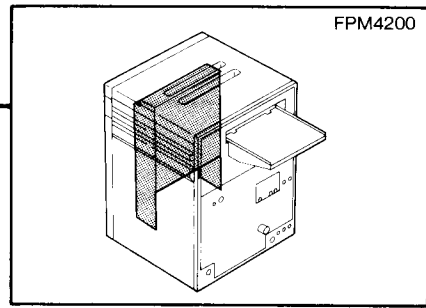
Ref. No.	Part No.	Part Name	Qty	Remarks
1	319F3286	Shaft	1	
2	349F0467A	Sideplate, rack	2	
3	347F0593A	Spacer	3	
4	319F8343122	Shaft	17	
5	363F8353573	Plate, guide	10	
6	347F0436	Spacer	2	
7	347F0590A	Spacer	3	
8	319F8343122	Shaft	17	
9	363F1607	Guide	14	
10	319F8343121	Shaft	10	
11	347F0436	Spacer	2	
12	319F8343122	Shaft	17	
13	363F8353573	Plate, guide	10	
14	319F3288	Shaft	1	
15	310F1002018	Pin, straight	9	
16	319F8343125	Shaft	2	
17	340F0130	Handle	2	
18	322FC049	Support, shaft	64	
19	388F2031	Spring, extension	22	
20	319F3285	Shaft	2	

## Drawing

Ref. No.	Part No.	Part Name	Qty	Remarks
21	322FC050	Support, shaft	16	
22	349F0467A	Sideplate, rack	2	
23	327F8344151	Gear, spur	36	
24	319F8343351	Shaft	5	
25	319F3284	Shaft	5	
26	322FC050	Support, shaft	16	
27	338F0261	Collar	1	
28	338S0001	Collar	1	
29	327F8342134A	Gear, helical	4	
30	309F8312112	Washer	6	
31	327F8344151	Gear, helical	36	
32	338S0010	Ring	54	
33	327F8344391	Gear, spur	9	
34	338S0010	Collar	54	
35	334F8343220	Roller, resin	10	
36	334F3255	Roller, rubber	1	
①	327F8344150	Spur gear assembly		
②	327F8344390	Spur gear assembly		
③	802F0347B	Squeegee rack assembly		

## DRYER RACK

FPM4200



d	1	b	2
	57 58		59 60

## Drawing

Ref.No.	Part No.	Part Name	Qty	Remarks
1	335F8312294	Flange	2	
2	338F8342732	Collar	1	
3	322FA005	Support, shaft	2	
4	360F0139	Housing	1	
5	310F1002018	Pin, straight	9	
6	319F2090	Shaft	1	
7	327F8342136A	Gear, helical	1	
8	305F0042	Nut	1	
9	356F2490	Bracket	1	
10	321S0012	Unit, bearing	3	
11	322FC049	Support, shaft	62	
12	388F2031	Spring, extension	22	
13	324F8342871	Pulley, flat belt	2	
14	338S0010	Ring	54	
15	334F2576	Roller	4	
16	319F1613	Shaft	1	
17	388F2080	Spring, extension	1	
18	338F0051	Collar	1	
19	362F0117	Support	1	
20	309F8312112	Washer	6	
21	336F0012	Drum	1	
22	319F1228	Shaft	1	
23	319F1614	Shaft	1	
24	324F1005	Pulley, flat belt	5	
25	313F0383A	Stay	4	
26	363F1613	Guide	2	
27	338F8342841	Collar	4	
28	324F1005	Pulley, flat belt	4	
29	313F0383A	Stay	4	
30	371F0018	Pipe, spray	13	
31	324F8342882	Pulley, flat belt	14	
32	362F8317211	Support	28	

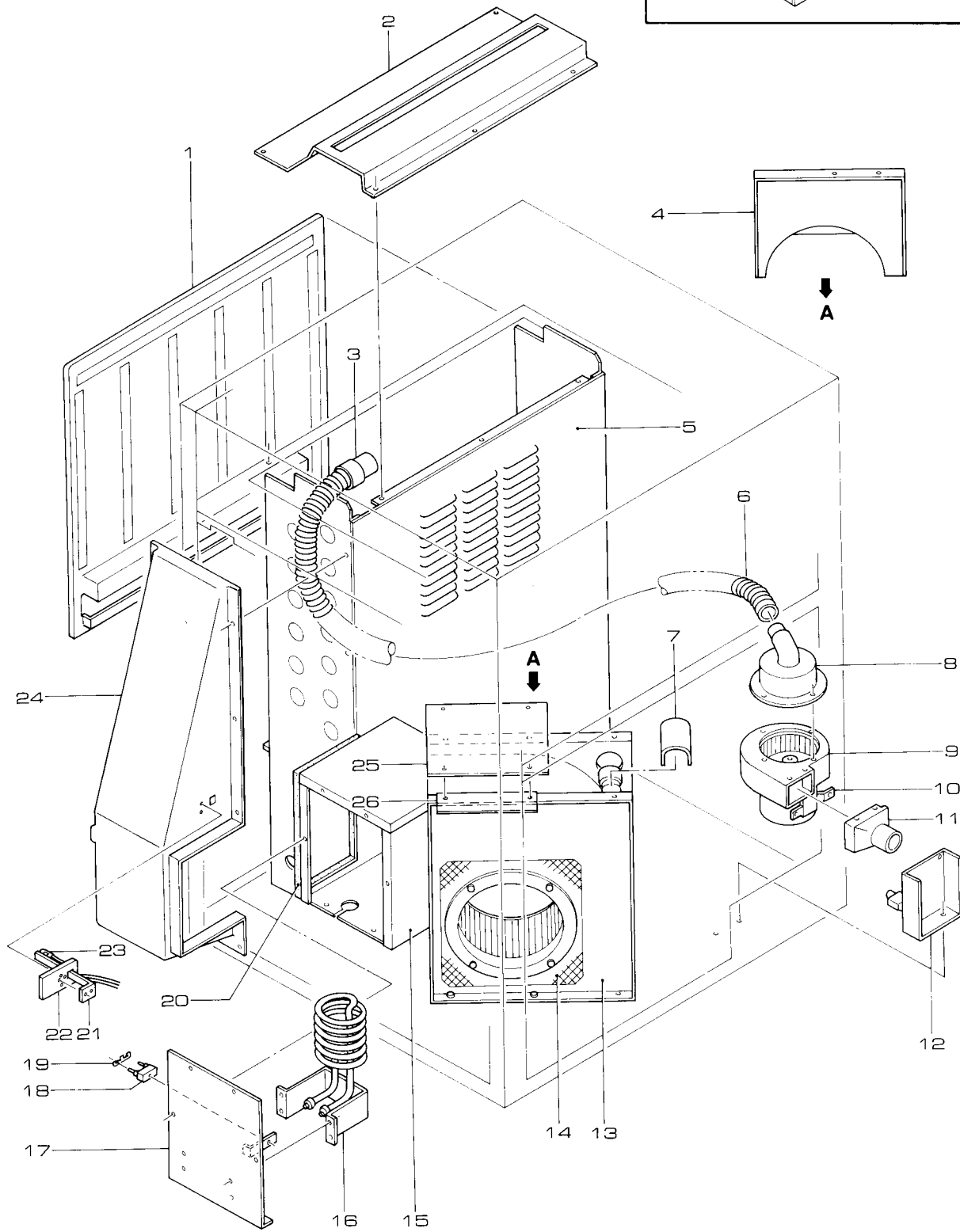
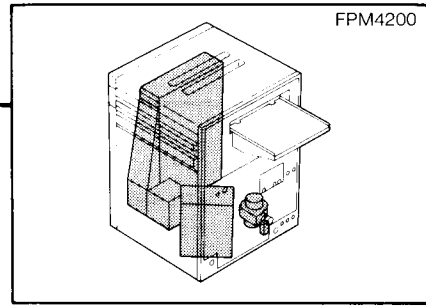
## Drawing

Ref.No.	Part No.	Part Name	Qty	Remarks
33	349F0461C	Sideplate, rack	1	
34	308F0179	Screw, special	1	
35	319F2218A	Shaft	1	
36	388F2035	Spring, extension	2	
37	322FC169	Support, shaft	2	
38	363F1614C	Plate, guide	1	
39	338F8342841	Collar	4	
40	324F0013	Pulley, flat belt	1	
41	324F8342871	Pulley, flat belt	2	
42	338S0010	Ring	54	
43	324F1005	Pulley, flat belt	5	
44	323F0031	Belt	1	1.1 Thick x25 Wide 1483mm Long
45	334F2575	Roller	1	
46	345F0834B	Partitioner	1	
47	362F8344336	Support	2	
48	334F3054	Roller, rubber	9	
49	313F0383A	Stay	4	
50	334F1112A	Roller, metal	1	
51	349F0462B	Sideplate, rack	1	
52	319F2084A	Shaft	1	
53	327F8342861	Gear, spur	2	
54	334F8317230	Roller, resin	14	
55	319F8317224	Shaft	13	
56	388F8317222	Spring, coiled	13	
57	327F8342861	Gear, spur	2	
58	338S0010	Ring	54	
59	327F8344151	Gear, spur	36	
60	338S0010	Ring	54	
①	327F0032	Spur gear assembly		
②	327F8344150	Spur gear assembly		



## DRYER FAN SECTION

FPM4200

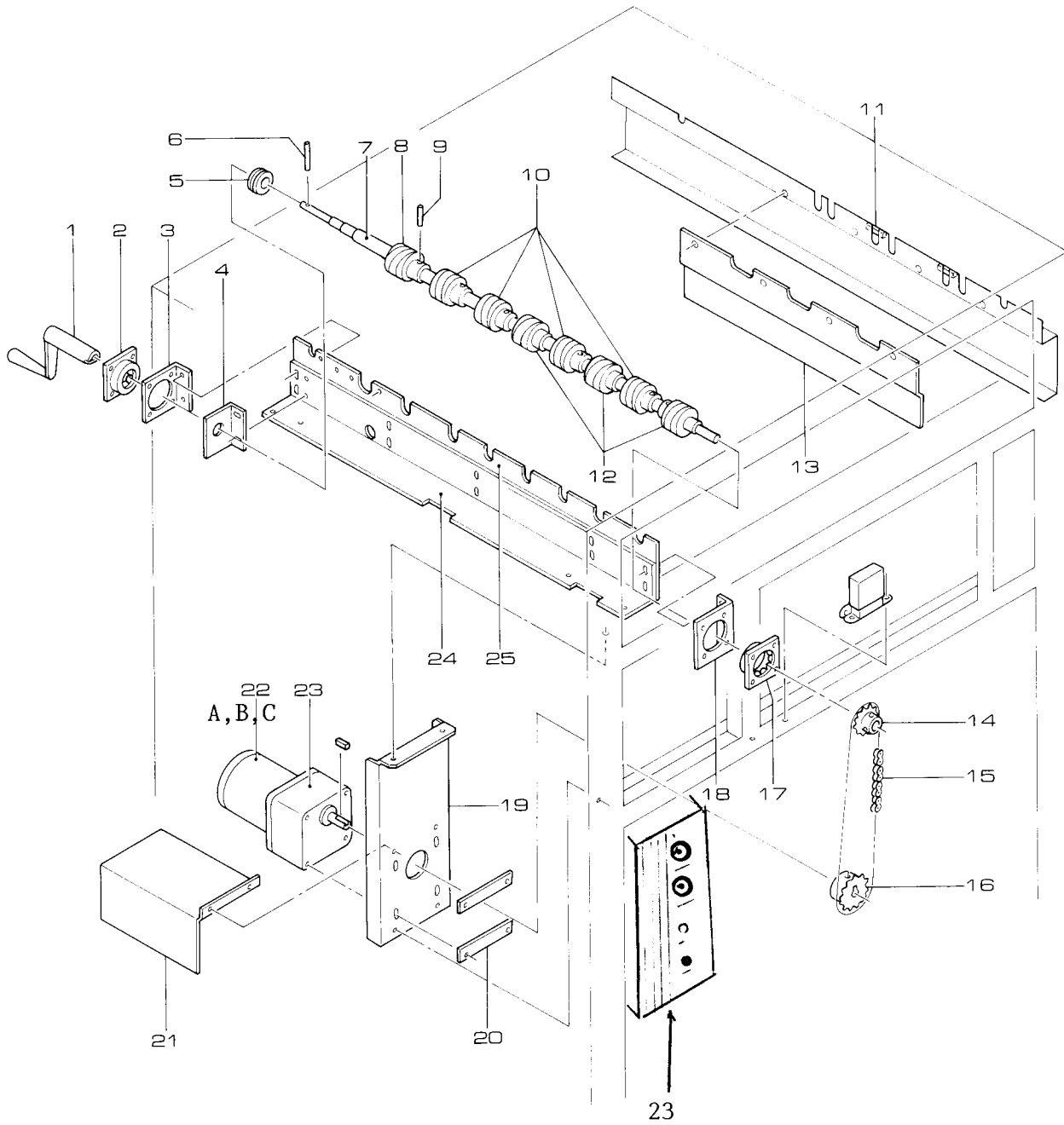
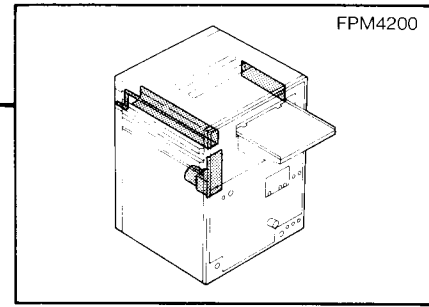


## Drawing

Ref.No.	Part No.	Part Name	Qty	Remarks
1	345F0837C	Plate, shield	1	
2	345F0433A	Partitioner	1	
3	372F0259	Fitting, tube	1	50mm Diam.
4	350F1983	Cover	1	
5	345F0835A	Partitioner	1	
6	370FA003100	Hose, flexible	1	50mm Diam.
7	350F1982	Cover	1	
8	372F0458	Fitting, tube	1	
9	119F2003A	Fan, motor	1	
10	356F0487A	Bracket	1	Oriental PAS 4B-Q2
11	372F0257	Fitting, tube	1	
12	356F2860	Bracket	1	
13	119F1067	Fan, motor	1	100V AC
14	346F0024	Gauze, wire, protective	1	

## Drawing

Ref.No.	Part No.	Part Name	Qty	Remarks
15	358F0262A	Box	1	
16	117F9105	Heater	1	
17	350F1939B	Cover	1	
18	137F2025	Holder, fuse	1	
19	137F3005	Fuse, thermal	1	160°C (320°F), 20A, 250V
20	382F0340	Tape, sponge	1	10 Thick×10mm Wide
21	356F2850A	Bracket	1	
22	346F0615	Plate, auxiliary	1	
23	115F9025A	Thermistor	1	
24	361F0089A	Chamber	1	
25	346F0619	Plate, auxiliary	1	
26	356F2851A	Bracket	2	



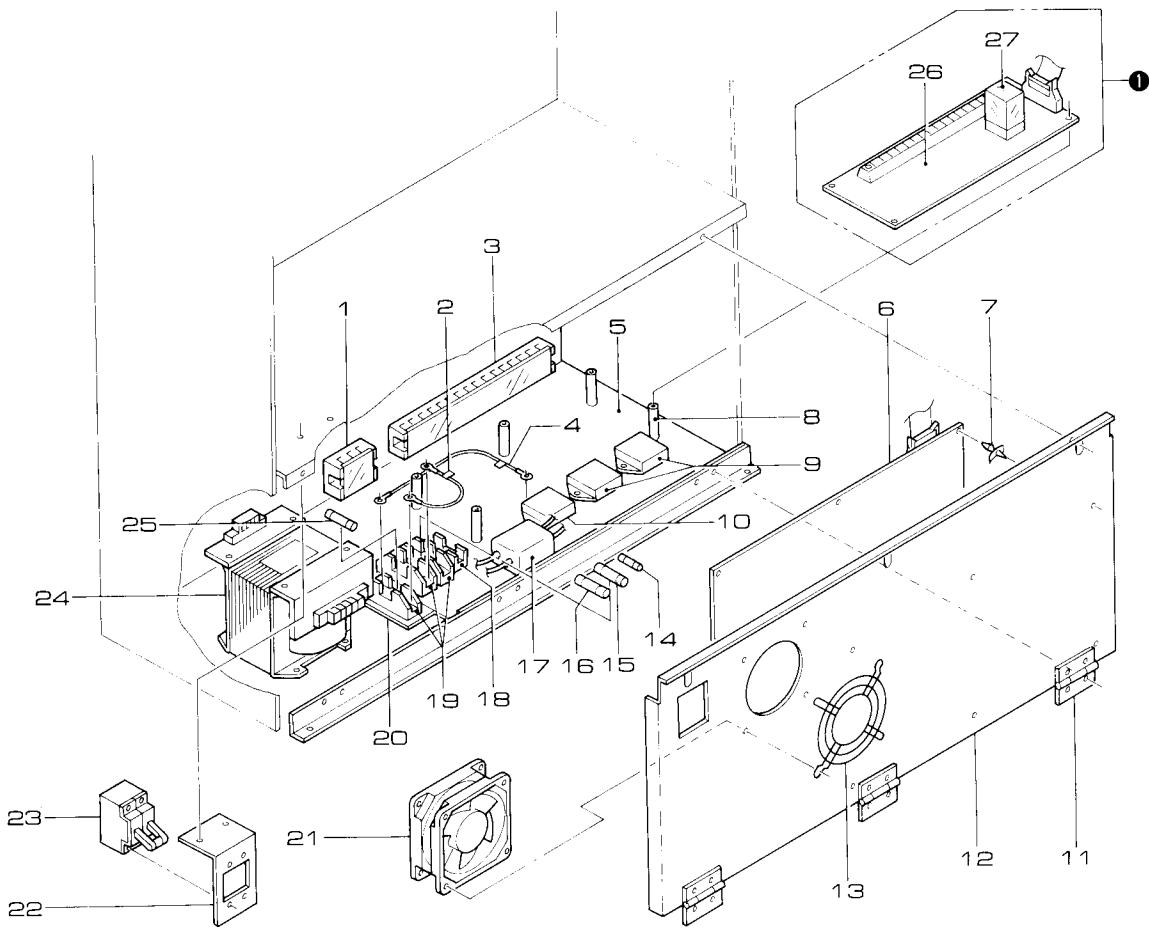
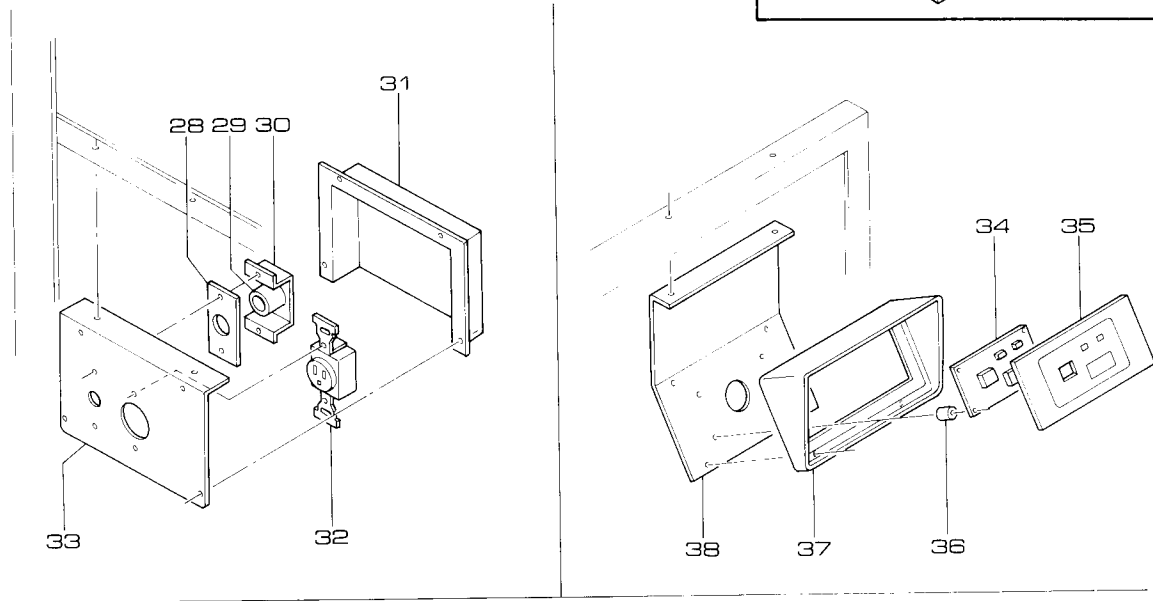
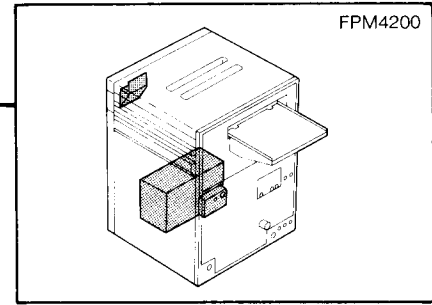
Drawing				
Ref.No.	Part No.	Part Name	Qty	Remarks
1	339F0011	Handle	1	
2	321S0012	Unit, bearing	3	
3	356F0440A	Bracket	2	
4	356F2858	Bracket	1	
5	322FA014	Bearing, thrust	1	
6	310F1003020	Pin, straight	9	3 Diam. x20mm Long
7	319F2714	Shaft	1	
8	327F8342123	Worm	1	
9	310F1003020	Pin, straight	9	3 Diam. x20mm Long
10	327F8342121A	Worm	4	
11	346F0574	Plate, auxiliary	2	
12	327F8342122A	Worm	3	
13	346F0616	Plate, auxiliary	1	

Drawing				
Ref.No.	Part No.	Part Name	Qty	Remarks
15	325F2115090	Chain		90 links
**16	14200ME00001	Sprocket	1	(double capacity)
17	321S0012	Unit, bearing	3	
18	356F0440A	Bracket	2	
19	356F2852A	Bracket	1	
20	305F0039	Nut	2	
21	14200ZZ00003	Cover	1	
22	See Below	Motor	1	
*23	14200KT00004	Speed Control	1	
24	356F2854B	Bracket	1	
25	362F0760	Support	1	

\* NOTE: Speed control used for 4200 variable speed model only. Variable motor and speed control must be used together. Long and short cycle motors are not compatible with speed control.

22A 14200MT00001 Motor - Long Cycle  
 22B 14200MT00002 Motor - Short Cycle  
 \* 22C 14200MT00003 Motor - Variable Speed

\*\* The same motor sprocket is used for long, short, and variable cycle models.



## Drawing

Ref. No.	Part No.	Part Name	Qty	Remarks
1	135F3029	Strip, terminal	1	
2	136FC773	Cable	1	
3	135S0026	Strip, terminal	1	
4	136FC774	Cable	1	
5	356F2856	Bracket	1	
6	113F0466B	PCB, CMP	1	
7	316F3061	Collar	6	
8	347F0594	Spacer	5	
9	102F8005	Photorelay	2	SF20DC-H1
10	102F8007	Photorelay	1	SF20DC-H1
11	314F0076	Hinge	3	
12	356F2855B	Bracket	1	
13	364F0027	Guard	1	
14	137S1042031	Fuse	1	125V, 3.15A
15	137S1013100	Fuse	1	250V, 10A
16	137F1066	Fuse	1	250V, 15A
17	138S0066	Suppressor, noise	1	TDK ZGB2202-01
18	137F2041	Holder, fuse	1	
19	137F2039	Holder, fuse	3	
20	356F4516	Bracket	1	
21	119F1040	Fan, motor	1	100V AC

## Drawing

Ref. No.	Part No.	Part Name	Qty	Remarks
22	356F2853B	Bracket	1	
23	128F9228	Breaker, circuit	1	
24	108F0145A	Transformer	1	
25	137S1033315	Fuse	1	250V, 31.5A
26	113F0438A	PCB assembly	1	
27	131S0307	Relay	1	AP3i24K (HC2-AC100V)
28	375F8341156	Packing	1	
29	121S0002	Buzzer	1	RMB-12
30	356F8341155	Bracket	1	
31	350F1944	Cover	1	
32	120F7025A	Receptacle	1	
33	356F2863	Bracket	1	
34	113F0439C	PCB, display	1	
35	405F6028A	Panel, display	1	
36	347F0320	Spacer	4	
37	350F1943	Cover	1	
38	356F2864A	Bracket	1	
①	814FA382E	Controller	1	
①	814FA446A	Controller	1	For Canada only

## FPM4200 PART NO. INDEX LIST

Part No.	Index No.-Ref. No.	Part No.	Index No.-Ref. No.	Part No.	Index No.-Ref. No.
102F8005	13-09	309F8312112	07-24	319F2196B	06-15
102F8007	13-10	309F8312112	08-38	319F2196B	06-24
108F0145A	13-24	309F8312112	08-68	319F2197	07-20
113F0438A	13-26	309F8312112	09-30	319F2203	04-04
113F0439C	13-34	309F8312112	10-20	319F2203	05-06
113F0466B	13-06	309F8341147	01-46	319F2218A	10-35
115F4027	02-20	310F1002018	04-05	319F2714	12-07
115F9025A	11-23	310F1002018	05-05	319F3284	09-25
115S0030	02-17	310F1002018	06-13	319F3285	09-20
117F9090	02-19	310F1002018	07-19	319F3286	09-01
117F9105	11-16	310F1002018	08-28	319F3287	06-14
		310F1002018	08-61	319F3288	09-14
119F1040	13-21	310F1002018	09-15	319F8317224	10-55
119F1067	11-13	310F1002018	10-05	319F8343121	07-02
119F2003A	11-09	310F1003020	12-06	319F8343121	08-10
120F7025A	13-32	310F1003020	12-09	319F8343121	08-18
121S0002	13-29	312F8344136	04-07	319F8343121	08-45
128F9228	13-23	312F8344136	05-07	319F8343121	08-52
128S0012	01-10	312F8344136	06-16	319F8343121	09-10
131S0307	13-27	312F8344136	07-14	319F8343122	07-04
133F1070	02-09	312F8344136	08-16	319F8343122	07-18
133F1323	02-38	312F8344136	08-50	319F8343122	08-34
133F1385	02-20	313F0383A	10-25	319F8343122	08-64
133F1450	02-36	313F0383A	10-29	319F8343122	09-04
133F1451	02-34	313F0383A	10-49	319F8343122	09-08
133F1452	02-33	313F0385B	04-18	319F8343122	09-12
133F1453	02-40	313F0385B	05-16	319F8343123	07-29
133F1454	02-35	313F0385B	06-39	319F8343123	08-01
133F1455	02-37	314F0076	13-11	319F8343123	08-35
134F1017	02-14	316F2035	03-16	319F8343123	08-40
135F3029	13-01	316F2047	02-06	319F8343123	08-65
135S0026	13-03	316F2047	03-20	319F8343124	07-06
136FC773	13-02	316F2048A	03-19	319F8343124	08-20
136FC774	13-04	316F3061	13-07	319F8343124	08-54
137F1066	13-16	316F7033	02-21	319F8343125	07-08
137F2025	11-18	316F7065	03-05	319F8343125	09-16
137F2039	13-19	316F7065	03-07	319F8343351	07-31
137F2041	13-18	316S2013	03-18	319F8343351	08-09
137F3005	11-19	316S2014	03-17	319F8343351	08-43
137S1013100	13-15	317F1008C	02-30	319F8343351	09-24
137S1033315	13-25	317F1060	01-27	319F8344121	04-06
137S1042031	13-14	317F5029	02-07	319F8344121	05-04
138S0066	13-17	317F5031	01-44	319F8344121	06-12
305F0029	01-41	319F1228	10-22	319F8344123	04-20
305F0039	12-20	319F1232	08-19	319F8344123	05-18
305F0040	01-09	319F1232	08-53	319F8344123	06-27
305F0042	10-08	319F1525	04-03	319F8344371	04-27
308F0179	10-34	319F1525	05-03	319F8344371	04-37
308F8318148	02-28	319F1525	06-11	319F8344371	05-26
309F0039	04-02	319F1613	10-16	319F8344371	05-34
309F0039	05-02	319F1614	10-23	319F8344371	06-34
309F0039	06-10	319F2084A	10-52	319F8344371	06-42
309F8312112	04-41	319F2090	10-06	321S0012	10-10
309F8312112	05-39	319F2196B	04-08	321S0012	12-02
309F8312112	06-01	319F2196B	05-14	321S0012	12-17

Part No.	Index No.-Ref. No.	Part No.	Index No.-Ref. No.	Part No.	Index No.-Ref. No.
322FA005	10-03	324F8342871	10-41	327F8344150	07-①
322FA014	12-05	324F8342882	10-31	327F8344150	08-①
322FC048	04-23	325F2115090	12-15	327F8344150	09-①
322FC048	04-39	325F8344133	04-09	327F8344150	10-②
322FC048	05-22	325F8345133	05-13	327F8344151	04-53
322FC048	05-38	325F8346133	06-19	327F8344151	05-56
322FC048	06-30			327F8344151	06-51
322FC048	07-07			327F8344151	07-33
322FC048	07-28	326F8342253	12-16	327F8344151	08-69
322FC048	08-59	326F8342254	12-16	327F8344151	09-23
322FC049	04-19	326F8344170	04-②	327F8344151	09-31
322FC049	04-28	326F8344170	05-②	327F8344151	10-59
322FC049	04-36	326F8344170	06-②	327F8344160	04-⑤
322FC049	04-45	326F8344171	04-50	327F8344160	05-⑤
322FC049	05-21	326F8344171	05-51	327F8344160	06-⑤
322FC049	05-24	326F8344171	06-48	327F8344161	04-57
322FC049	05-37	326F8344180	04-①	327F8344161	05-54
322FC049	06-06	326F8344180	05-①	327F8344161	06-55
322FC049	06-26	326F8344180	06-①	327F8344311	04-30
322FC049	06-33	326F8344181A	04-48	327F8344311	05-30
322FC049	07-10	326F8344181A	05-49	327F8344311	06-37
322FC049	07-25	326F8344181A	06-46	327F8344390	04-⑥
322FC049	08-21	326F8344191	04-11	327F8344390	05-⑥
322FC049	08-39	326F8344191	05-10	327F8344390	06-⑥
322FC049	08-55	326F8344191	06-22	327F8344390	07-②
322FC049	09-18	327F0032	10-①	327F8344390	08-⑥
322FC049	10-11	327F0033	08-②	327F8344390	09-②
322FC050	04-22	327F1101001	08-31	327F8344391	04-52
322FC050	04-25	327F1102005	08-32	327F8344391	05-53
322FC050	04-34	327F1121601	07-32	327F8344391	06-50
322FC050	04-46	327F1121601	08-08	327F8344391	07-35
322FC050	05-20	327F1121601	08-44	327F8344391	08-73
322FC050	05-23	327F1121601	08-71	327F8344391	09-33
322FC050	05-35	327F8342121A	12-10	334F1017A	08-12
322FC050	06-07	327F8342122A	12-12	334F1112A	10-50
322FC050	06-28	327F8342123	12-08	334F2154	04-62
322FC050	06-31	327F8342134	05-40	334F2154	05-63
322FC050	07-11	327F8342134	06-02	334F2154	06-60
322FC050	07-26	327F8342134A	04-42	334F2155	07-17
322FC050	08-23	327F8342134A	09-29	334F2155	08-48
322FC050	08-57	327F8342135A	07-23	334F2426A	04-59
322FC050	09-21	327F8342135A	08-37	334F2426A	05-60
322FC050	09-26	327F8342135A	08-67	334F2426A	06-57
322FC051	08-06	327F8342136A	10-07	334F2575	10-45
322FC051	08-27	327F8342861	10-53	334F2576	10-15
322FC052	08-05	327F8342861	10-57	334F3054	10-48
322FC052	08-29	327F8344140	04-⑤	334F3057	08-11
322FC161	05-44	327F8344140	05-⑤	334F3255	09-36
322FC169	10-37	327F8344140	06-⑤	334F8317230	10-54
323F0031	10-44	327F8344141	04-55	334F8343210	07-16
324F0013	10-40	327F8344141	05-58	334F8343220	07-15
324F1005	10-24	327F8344141	06-53	334F8343220	08-14
324F1005	10-28	327F8344150	04-④	334F8343220	08-47
324F1005	10-43	327F8344150	05-④	334F8343220	09-35
324F8342871	10-13	327F8344150	06-④	334F8344220	04-60



Part No.	Index No.-Ref. No.	Part No.	Index No.-Ref. No.	Part No.	Index No.-Ref. No.
334F8344230	04-61	338S0010	05-52	347F0593A	07-01
334F8344230	05-62	338S0010	05-55	347F0593A	09-03
334F8344230	06-59	338S0010	05-57	347F0594	13-08
334F8344250	04-63	338S0010	06-23	348F0528	01-21
334F8344250	05-64	338S0010	06-45	348F0602	01-26
334F8344250	06-61	338S0010	06-49	349F0275A	08-03
334F8344250	08-15	338S0010	06-52	349F0275A	08-24
334F8344250	08-46	338S0010	06-56	349F0461C	10-33
334F8344260	04-64	338S0010	07-34	349F0462B	10-51
334F8344260	05-65	338S0010	07-36	349F0465A	04-24
334F8344260	06-62	338S0010	08-70	349F0465A	04-33
334F8344270	04-65	338S0010	08-72	349F0467A	09-02
334F8345210	05-61	338S0010	09-32	349F0467A	09-22
334F8345210	06-58	338S0010	09-34	349F0468	07-12
335F6791522	04-40	338S0010	10-14	349F0468	07-21
335F6791522	05-42	338S0010	10-42	349F0469	06-08
335F6791522	06-04	338S0010	10-58	349F0469	06-36
335F8312294	10-01	338S0010	10-60	349F0480	05-28
336F0012	10-21	338S0011	04-49	349F0480	05-32
337F8344192	04-14	338S0011	04-56	349F8343312	08-41
337F8344192	05-11	338S0011	05-50	349F8343312	08-58
337F8344192	06-20	338S0011	05-59	350F0010	02-18
337F8344193	04-12	338S0011	06-47	350F0248	02-01
337F8344193	04-15	338S0011	06-54	350F0323	02-25
337F8344193	05-09	339F0011	12-01	350F0882C	01-15
337F8344193	05-12	340F0127	01-45	350F0882C	01-32
337F8344193	06-21	340F0130	09-17	350F1694B	01-01
337F8344342	04-10	345F0433A	11-02	350F1695	01-15
337F8344342	05-08	345F0832C	01-17	350F1695	01-32
337F8344342	06-18	345F0833C	01-35	350F1782A	02-03
338F0051	10-18	345F0834B	10-46	350F1939B	11-17
338F0261	09-27	345F0835A	11-05		
338F0278A	04-31	345F0836	01-13	350F1941	02-08
338F0278A	05-29	345F0837C	11-01	350F1943	13-37
338F0565	06-03	346F0024	11-14	350F1944	13-31
338F8342732	10-02	346F0574	12-11	350F1945	01-08
338F8342841	10-27	346F0613	01-02	350F1957A	01-42
338F8342841	10-39	346F0614	02-39	350F1981A	01-42
338F8343133	07-22	346F0615	11-22	350F1982	11-07
338F8343133	08-36	346F0616	12-13	350F1983	11-04
338F8343133	08-66	346F0617	01-36	350F1993	02-22
338F8343134	07-13	346F0619	11-25	350F1994	01-01
338F8343134	08-17	346F0620	01-38	350F2298	01-25
338F8343134	08-51	347F0320	13-36	350F2338	02-16
338F8344134A	04-43	347F0436	09-06	350F8341136	01-23
338F8344134A	05-41	347F0436	09-11	355F0355C	01-29
338F8344135	06-17	347F0588	01-04	356F0440A	12-03
338F8614182	08-74	347F0590A	07-05	356F0440A	12-18
338S0001	09-28	347F0590A	09-07	356F0454	06-44
338S0010	04-13	347F0591A	04-32	356F0464	01-05
338S0010	04-47	347F0591A	05-31	356F0487A	11-10
338S0010	04-51	347F0591A	06-40	356F2490	10-09
338S0010	04-54	347F0592A	04-16	356F2849A	03-04
338S0010	04-58	347F0592A	05-15	356F2850A	11-21
338S0010	05-48	347F0592A	06-25	356F2851A	11-26

Part No.	Index No.-Ref. No.	Part No.	Index No.-Ref. No.	Part No.	Index No.-Ref. No.
356F2852A	12-19	363F1610	05-17	388F2031	05-43
356F2853B	13-22	363F1610	06-38	388F2031	06-05
356F2854B	12-24	363F1611B	01-12	388F2031	06-29
356F2855B	13-12	363F1612B	01-22	388F2031	07-09
356F2856	13-05	363F1613	10-26	388F2031	07-27
356F2858	12-04	363F1614C	10-38	388F2031	08-02
356F2860	11-12	363F8353573	09-05	388F2031	08-22
356F2861	01-19	363F8353573	09-13	388F2031	08-56
356F2862	01-31	364F0027	13-13	388F2031	09-19
356F2863	13-33	367F0071	01-28	388F2031	10-12
356F2864A	13-38	369N0005A	02-23	388F2032	04-21
356F2872	01-39	370F130E100	03-15	388F2032	04-44
356F2873	01-40	370FA003100	11-06	388F2033	04-26
356F4516	13-20	370S107B100	03-12	388F2033	04-35
356F8341155	13-30	370S112E100	03-13	388F2033	05-25
357F0329A	01-24	370S119E100	03-14	388F2033	05-36
358F0262A	11-15	371F0018	10-30	388F2033	06-32
359F0058A	01-20	371F0150	02-24	388F2035	10-36
359F0059	01-30	371F0274	02-04	388F2080	10-17
359F0184B	02-02	371S0011	03-08	388F8317222	10-56
360F0015B	02-32	372F0086	02-11	388F8344372	04-29
360F0139	10-04	372F0090	02-12	388F8344372	05-27
361F0089A	11-24	372F0230	02-15	388F8344372	06-35
362F0117	10-19	372F0257	11-11	388F8344373	04-38
362F0120A	01-33	372F0259	11-03	388F8344373	05-33
362F0121	01-16	372F0263	03-09	388F8344373	06-41
362F0123	01-11	372F0289	03-03	394F0012	01-03
362F0523	05-45	372F0387	02-05		
362F0525	05-47	372F0409A	03-10		
362F0545A	01-34	372F0447	03-11	405F6028A	13-35
362F0547	01-43	372F0458	11-08	405F6513A	01-47
362F0760	12-25	372S0004	03-01	405F8319231	04-01
362F8317211	10-32	374F2076	03-06	405F8319231	07-30
362F8344336	08-25	374F2077	03-02	405F8319232	05-01
362F8344336	08-33	374F2078	02-13	405F8319233	06-09
362F8344336	08-60	375F0041A	02-31	405F8319234	08-04
362F8344336	08-63	375F0056	02-27	405F8319235	08-42
362F8344336	10-47	375F8341156	13-28	802F0068B	08-5
363F0198	08-49	375S0001	02-29	802F0191D	08-4
363F0199	08-30	376F0018	02-26	802F0343G	06-7
363F0199	08-62	376F0026A	02-1	802F0344A	07-5
363F0202	08-13	379F0206	02-10	802F0347B	09-5
363F0203	06-43	382F0046	01-14	802F0452A	04-7
363F1442	05-46	382F0340	11-20	802F0453A	05-7
363F1606	01-37	385F0199	01-18	812F0177B	01-06
363F1607	09-09	388F2018	08-07	812F0178B	01-07
363F1608A	04-17	388F2018	08-26	814FA382E	13-1
363F1609	07-03	388F2031	05-19	814FA446A	13-1
376F0112	02-26A	14200ME00001	12-16		
14200CT00001	03-21	14200KT00004	12-23		
14200FRO0001	02-41	14200MT00001	12-22A		
14200ZZ00004	02-42	14200MT00002	12-22B		
14200ZZ00003	12-21	14200MT00003	12-22C		